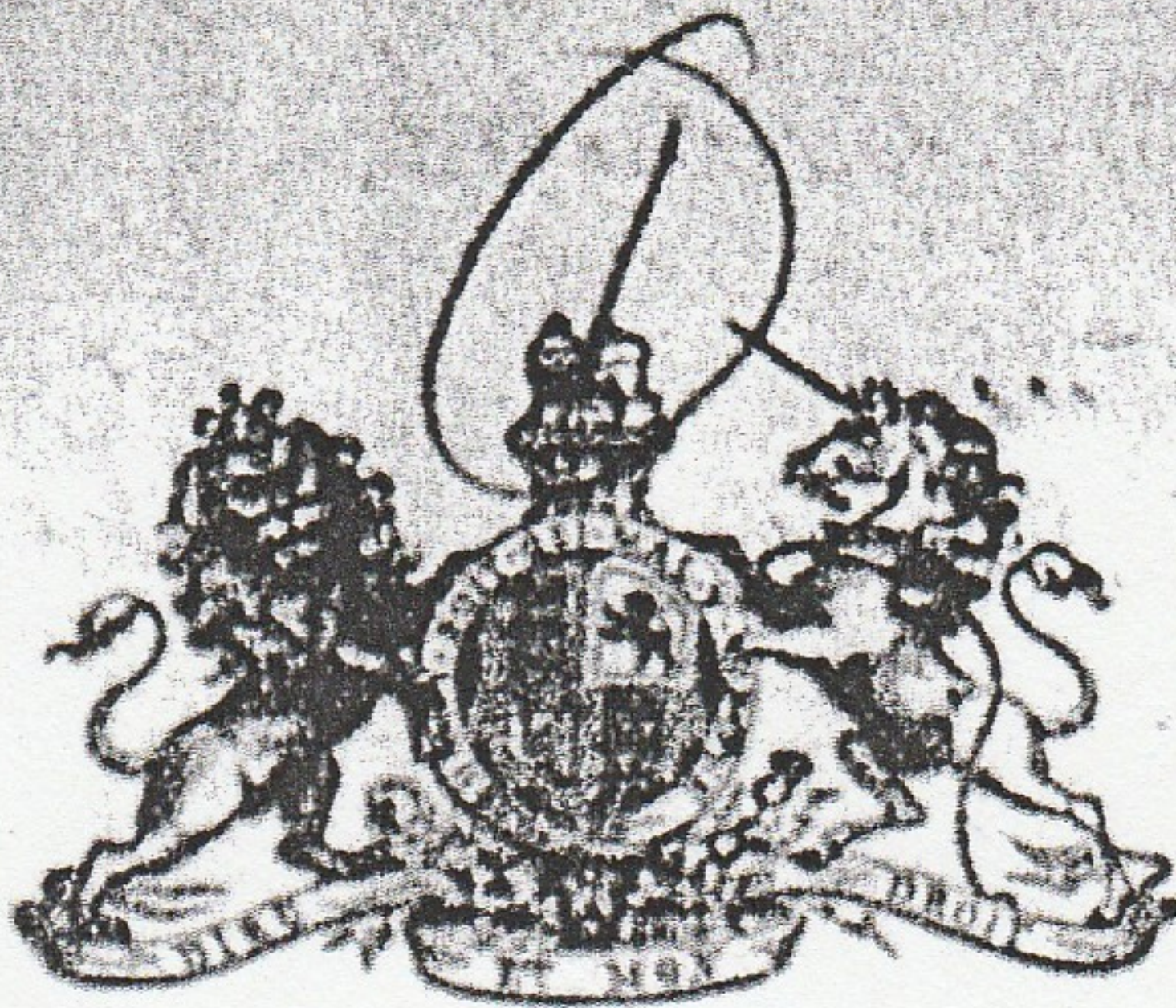


[CORONER.]



171

42

INQUISITION

County of Kootenay
Kaslo, British Columbia

An Inquisition indented taken at Kaslo

British Columbia, the 20th. day of July, in

the 1942 year of the Reign of our Sovereign Lord the King, before

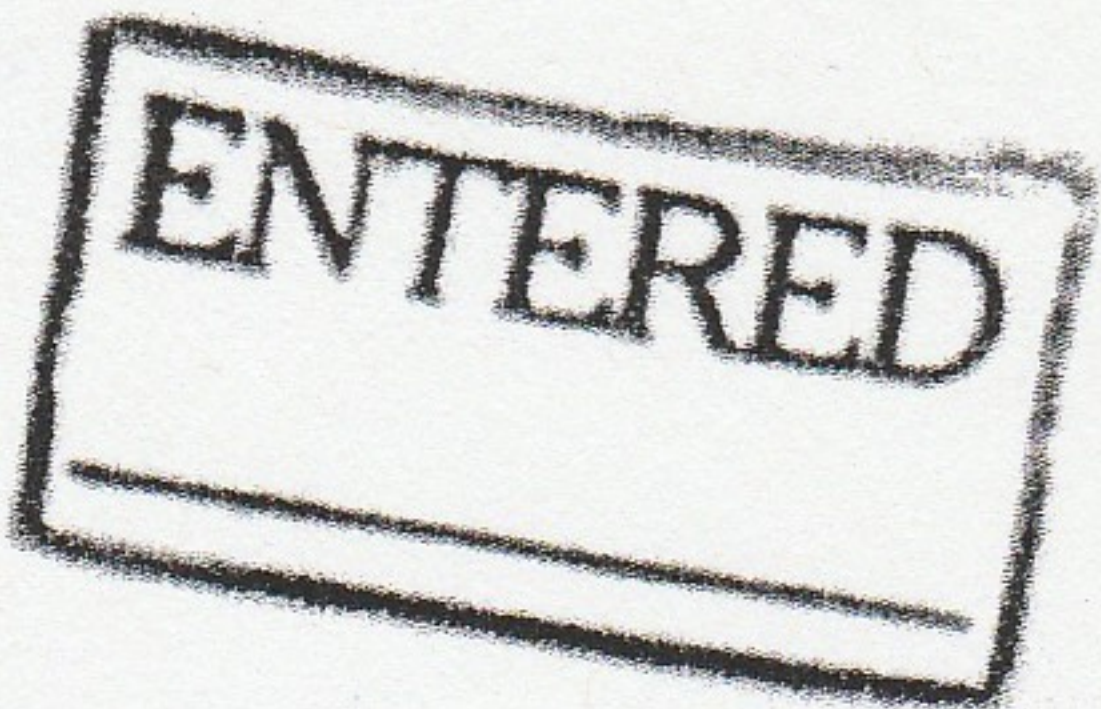
me, Dr. P.M.Auld, gentleman, one of the Coroners for

our Lord the King, for the County of Kootenay aforesaid, upon the view of the

body of Jukichi Onishi, then and there and within the

jurisdiction of the said Coroner, lying dead, upon the oaths of

Geo. W. Tipkess
Arthur Bavington
William Hendren
John Riddell
Eric Aldous
George Baker



good and lawful men of

Kaslo

ACKNOWLEDGED

, aforesaid, in the

said County of Kootenay

, who being now here sworn

and charged to inquire, on the part of our said Lord the King, when, where, how, and after what

manner, the said Jukichi Onishi

came to his death, do

say upon their oath, that

Jukichi Onishi came to his death on

The 20th day of July 1942 as a result of an accident.

on the afternoon of the 14th day of July 1942 at about

4:30 P.M. at Stephens Corner.

The accident occurred from the deceased being hit

by a truck owned and operated by the T.C. Security

Commission and at the time being driven by
a minor, who was asked to take over
by the official driver, Mitsuo Murakami.

A short time before the accident occurred on account of an attack of dizziness resultant from an illness of a few days previous.

That the truck was travelling at an excessive rate of speed for such a grade and sharp turn at the bottom, making it impossible to make the turn.

The rear of the truck apparently struck the deceased when leaving the main travelled road.

Death resulting from an injury to the left side of the head.

We the jury consider the death from accidental.

3
IN WITNESS whereof, as well the aforesaid Coroner as the Jurors aforesaid, have to this Inquisition,
put their seals, on the day and year and at the place first above mentioned.

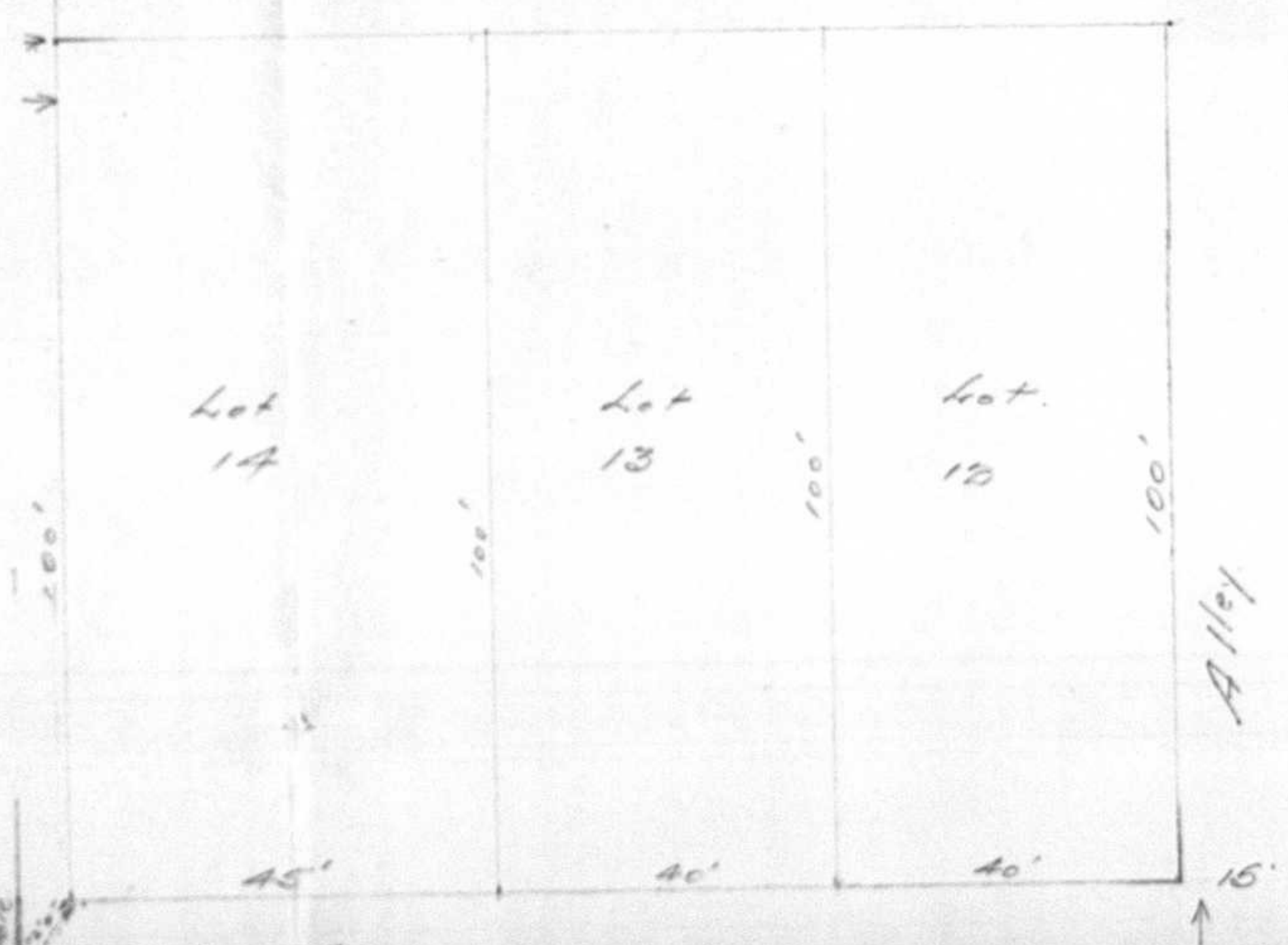
George S. Baker, Foreman
William Vanden
George W. Tinkess
John Riddell
Erie Aldous
Arthur Van Horn

Fred M. Auld
Coroner

Map 553 Block 10

4

60' → To New Drive
D. Avenue



SCALE 20' = 1 inch

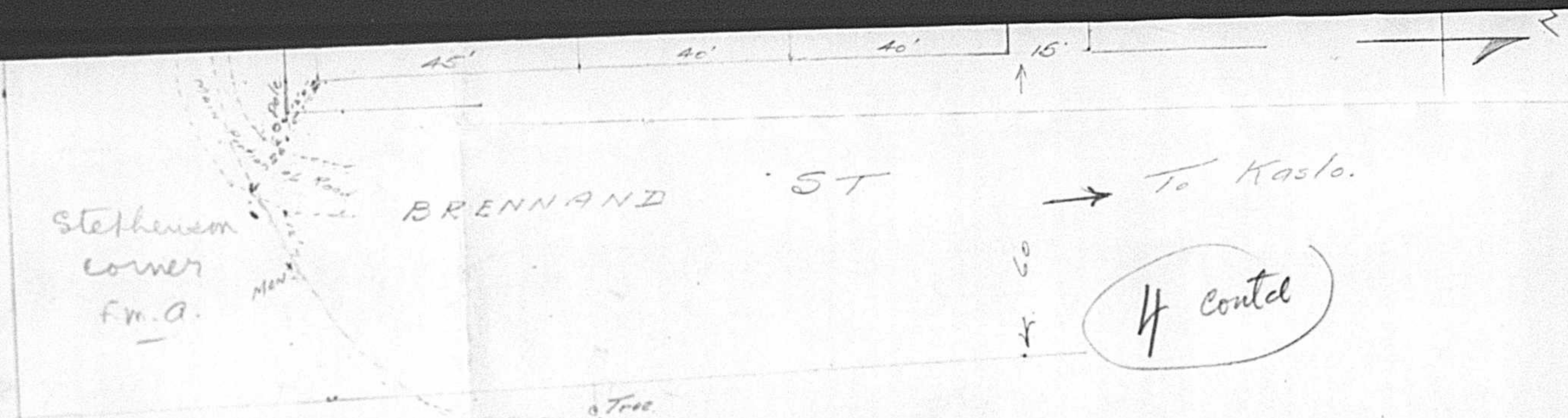


Exhibit one

Fred. M. Auld
corner

Inquest into cause of death
of Yukichi Oishi
Kaslo B.C.
July 20th 1942

CORONER'S INQUISITION.

BEFORE Frederick Moore Auld, Esq., M. D., Coroner
for the County of Kootenay, in the Province of
British Columbia, held at the Court House, Kaslo,
British Columbia, on Monday, July 20th, A. D. 1942,
into the death of:

JUKICHI ONISHI.

JURY:

George S. Baker, Foreman,
John Riddell, Eric Aldous, George W. Tinkess,
Arthur Bavington, William Hendren.

-----oOo-----

APPEARANCES:

Constable T. W. Glaholm, for the Crown.

E. Hamson, Sworn stenographer.

-----oOo-----

I N D E X

Gibson,	George M.	3
5.22		6
Kurakami,	Masao	11
Tanaki,	Mitsuaki	16
Furukawa,	Minoru	19
Harkley,	Clarice	23
Augustine,	Helga	27
VERDICT:		32

-----oOo-----

4:00 p. m., the Jury and the Coroner viewed the body at Thompson's Funeral Home, Kaslo, British Columbia, and then adjourned to the Court House for the purpose of taking evidence.

Court House, Kaslo, British Columbia.

GIBSON, George M., a witness herein called by the Crown, first having been duly SWORN, testified as follows:

Coroner.

1. Q. What is your full name, Doctor,
A. George M. Gibson,
2. Q. You are a duly qualified medical practitioner, practising in the City of Kaslo?
A. I am.
3. Q. And licensed to practise in the Province of British Columbia?
A. Yes.
4. Q. Do you recall the afternoon of Tuesday, July 14th, last?
A. Yes.
5. Q. There was a motor accident in which a man by the name of Jukichi Onishi was injured?
A. Yes.
6. Q. You rendered medical service to him?
A. Yes.
7. Q. Do you identify the body which we have just viewed at the Funeral Home as that of the man who was injured and attended by you, and who subsequently died?

A. Yes.

8. Q. Will you tell the Jury what you did, the injuries you found, and the general course of events?

A. When I arrived at the scene of the accident the man was lying on a blanket, covered by a blanket. His pupils were pin points. He had a scalp wound on the left side, back of the ear, about 4" or 5" long, half moon shaped, with an abrasion along his left forehead. His pupils were pin points. He was unconscious. We got him on a stretcher, and brought down to the hospital. We put him in bed, and put an ice pack on his head, and pulled the scalp wound together. We kept heat to his body, and left him with the hope that he would recover from the shock. His pulse was not very good, but later recovered. I think about 2 days afterwards his right eye pupil began to be normal, and would react to light, but the left pupil failed to do so at any time. We gave him an intravenous injection of saline and glucose to keep him up. We could not. He swallowed just a few drops of water. He was quite deeply unconscious all the time. Never recovered any more than that. His pulse on the night of July 19th became quite definitely weaker. His respiration more of the Cheyne-Stokes variety, and he died somewhere shortly after 12:0'clock that morning of July 20th.

9. Q. What in your opinion, Doctor, was the cause of death?

A. In my opinion, the man at the time he was struck at the back of his ear, there was no apparent fracture of the outer plate of the skull, but it is my opinion he had a fracture of the inner plate, with a slow hemorrhage.

9. A. (continued.)

There were blood cells in the final puncture that was made, that could only come from a hemorrhage into the covering of the brain, and that, I think, accounted for the paralysis of his right leg, and his right arm not completely paralysed, but practically so. The pressure, I think, was on the left side, and it would be, as paralysis was on the right side. The pressure or blow was on the left side, and the paralysis was on the right side. I think it was a slow, very slow, hemorrhage, but of sufficient pressure to prevent him becoming conscious again.

10. Q. Dr. Gibson, you would say that in your opinion the deceased came to his death as a result of an injury on the left side of the head, which in your belief resulted in a fracture of the inner plate of the skull, which caused a hemorrhage inside the skull, and produced pressure on the brain, and which ultimately led to the death of the deceased?

A. That is right.

11. Q. Are there any questions the Gentlemen of the Jury wish to ask the witness.

WITNESS ASIDE.

10

S. 22 a witness
herein, called by the Crown,
first having been duly SWORN,
testified as follows:

Coroner.

12. Q. What is your full name?

A. S. 22

13. Q. What do you live, S. 22

A. In Dominion Cafe, Kaslo, British Columbia.

14. Q. What do you do, S. 22

A. I work on odd jobs.

Constable Glaholm.

14. Q. Do you remember July 14th, at about 4:30 p.m.?

A. Yes.

15. Q. Can you tell me what happened? Where you were at that time?

A. I was driving the truck.

16. Q. You are a minor, I understand?

A. Yes.

17. Q. You are 15 years of age, is that correct?

A. You are not 16 yet?

A. No.

18. Q. How came you to drive the truck? How did it happen that you were driving the truck? You are not the original driver?

A. No.

Coroner.

19. Q. But somebody asked you to drive the truck?

A. Yes,

20. Q. Who?

A. Dave Murakami. David.

Constable Glaholm.

21. Q. He asked you to drive the truck?

A. Yes.

22. Q. Where were you when he asked you to drive the truck?

A. By the truck.

23. Q. In what locality?

A. We were up the hill. I don't know what you call the hill.

24. Which hill? Was the cemetery at the top of the hill?

A. Yes.

25. Q. When you took over the truck, where did you go?

A. Down the hill.

26. Q. You came down the hill?

A. Yes.

27. Q. That is towards Kaslo?

A. Yes.

28. Q. Coming down the hill, about what speed were you travelling?

A. 35 to 40 miles.

29. Q. About 35 to 40 miles an hour?

A. Yes.

30. Q. On coming down the hill did you notice anyone in the roadway? Did you notice any one at all in the roadway anywhere at all from where you could see in the truck to the end of the road?

A. Oh, about halfway down.

31. Q. When you were halfway down you saw, whom?

A. Mr. Onishi.

32. Q. Where did you see Mr. Onishi?

12

A. Down the road.

33. Q. But where down the road? Whereabouts was he on the road, the middle of the road; or was he standing on the side of the road?

A. Could not tell from there.

34. Q. But you could see him down there?

A. Yes.

35. Q. Did anything happen to the car just before you got to the corner?

A. No. Well, my foot slipped off the brakes.

36. Q. Your foot slipped off the brakes?

A. Yes.

37. Q. When your foot slipped off the brake, where did it go?

A. On to the floor boards.

38. Q. When you reached the corner just after you applied the brakes, about how fast were you travelling then?

A. About 20 miles an hour.

39. Q. When you saw you could not make the corner, what happened?

A. I skidded.

40. Q. You skidded?

A. Yes.

41. Q. And where did you go from there when you skidded on the corner?

A. Keep going straight.

42. Q. You went straight ahead?

A. Yes.

43. Q. How far did you go? What did you do? What happened to the truck?

A. Went through the fence and into a tree.

44. Q. Just before you got to the corner, did you see Mr.

13⁹

44. Q. (continued.)

Onishi still standing there?

A. Yes, he had something on his back.

45. Q. You noticed him when you got to the corner?

A. Yes.

46. Q. You also noticed him when you were coming down the hill, and then you noticed him when you got to the corner?

A. Yes.

47. Q. After hitting the tree, what did you do then?

A. Got out of the truck.

48. Q. See anything then?

A. At that time I didn't know we hit Mr. Onishi.

49. Q. You did not know you had hit Mr. Onishi when you first got out of the truck?

A. Yes.

50. Q. Did you see him at all lying there?

A. Yes, after I got out.

51. Q. Do you hold a driver's license at all?

A. No.

Jury.

52. Q. This lad said in his evidence he was going 40 miles an hour at the top of the hill. His foot slipped off the brake, and he was going 20 miles an hour at the bottom of the hill. Can you explain that? Can you make that clear?

Constable Glaholm.

53. Q. When you were coming down the hill you said you were travelling about 35 or 40 miles an hour. Then you say when you reached the corner you were travelling about 20 miles an hour?

14

A. Dave told me to put on the brakes lightly.

54. Q. Did you do that?

A. Yes.

55. Q. When you got to the corner you went to apply them again, is that the idea?

A. Yes.

56. Q. That is, your foot slipped off when you came to the corner and applied the brakes?

A. Tried to slow up for the corner.

57. Q. What brake did you use? Did you use your foot brake or the hand brake?

A. Foot brake. I never tried emergency brake.

57. Q. You did not try the emergency brake at all coming down the hill?

A. No.

58. Q. Just applied the foot brake?

A. Dave tried them on the bottom of the hill.

59. Q. Dave tried them on the corner, just on the corner, or before he got to the corner?

A. Down the bottom.

60. Q. What part of the truck struck Mr. Onishi? The front part?

A. I don't know.

61. Q. You do not know what part of the truck struck Mr. Onishi?

A. No.

Coroner.

62. Q. Are there any other questions the Gentlemen of the Jury wish to ask the witness?

WITNESS ASIDE.

MURAKAMI, Masawo, a witness herein called by the Crown, first having been duly SWORN, testified as follows:

Coroner.

63. Q. What is your full name?

A. Masawo Murakami.

Constable Glaholm.

64. Q. You are living in Kaslo, British Columbia?

A. Yes.

65. Q. You are working for the B. C. Security Commission?

A. Yes.

66. Q. You drive a truck for the Commission?

A. Yes, Sir.

67. Q. Do you remember July 14th last, about 4:30 in the afternoon, approximately?

A. Yes.

68. Q. Where were you at that time?

A. I was in a truck.

69. Q. Where, in the truck? Where was the truck?

A. Besides S. 22

70. Q. What part of the town, what part of Kaslo were you in the truck?

A. When the accident happened?

71. Q. No, previous to the accident you were up the hill?

A. Yes, I was up the hill.

72. Q. With the truck you had driven up the hill?

A. Yes.

73. Q. Why did you turn the truck over to S. 22 ?

A. I turned the truck over to S.22 when I had that dizzy spell coming on.

74. Q. You felt that you were incapable of driving the truck?

A. Yes, I felt I was incapable of driving the truck down the hill.

75. Q. You turned the truck over to S.22, and he started down the hill with the truck?

A. Yes.

76. Q. Coming down the hill, about how fast do you figure the truck would be travelling?

A. I figured the truck was--we were not driving very fast, normal speed.

77. Q. What speed would that be, approximately?

A. About 25 to 35 miles an hour.

78. Q. Did you say anything to S.22 on the way down the hill?

A. Halfway down I told S.22 to apply the brakes gently.

79. Q. Did he apply them?

A. Yes, he applied them gently.

80. Q. Did he keep applying them after you told him, or did he just apply them once?

A. I don't know whether he kept on applying them or not, but I felt the car slowing down when he applied these brakes.

81. Q. Did you see anyone in the roadway?

A. Not until I arrived at the corner.

82. Q. Who did you see on the corner?

A. I did see somebody, a man in a bent position.

83. Q. In that bent position was he facing the road or away from the road?

A. I don't recall which way he was facing, I was a bit dizzy myself.

84. Q. On reaching the corner, just before you got to the corner, did you say anything else to George?

A. Yes, I told him to apply the brakes again.

85. Q. Did he apply the brakes?

A. I think he did, I am not sure whether he really jammed on the brake.

86. Q. Put the brake on real hard?

A. As usual, put the brakes on.

87. Q. Did anything happen that you noticed when he put the brakes on?

A. Yes, I felt the car skidding, and when I felt the car skidding I more or less grabbed the emergency brake. It came to me as natural as I do in ordinary times.

88. Q. Did you notice whether George still had the foot brake on when you grabbed the emergency brake?

A. No, Sir.

89. Q. You could not tell whether he had the brake on or not?

A. No, just reached my hand out. I didn't see the floor board.

90. Q. What happened after you applied the emergency brake?

A. The next thing I knew we were up against the tree there.

91. Q. What happened after you found the car was up against the tree?

A. When I recovered I got out of the truck, and then I happened to look behind and I seen people standing around, so I walked up to the crowd, and then I saw a man lying on the ground, and saw it was Mr. Onishi. There was a lady beside him, and I asked her whether anything could be done. She told me not to touch him

91. A. (continued.)

until the Doctor came.

92. Q. Was the man lying on the ground, Mr. Onishi? Did you recognise him?

A. Yes, I recognised him when I see him lying on the ground.

93. Q. It is usually the habit when the truck is coming down the hill to pick up any of the Japanese that are standing on the corners?

A. Yes.

94. Q. Had you intended to stop and pick Mr. Onishi up?

A. Yes, that is a daily routine. I don't know about Mr. Onishi on the corner, because he would usually be down on the next block. I never picked Mr. Onishi up on that corner yet.

95. Q. In other words, it was not customary to pick Mr. Onishi up on that corner?

A. Yes.

96. Q. It was not customary?

A. Yes.

97. Q. Do you know just about approximately how far Mr. Onishi would be from the road when you walked back to see him?

A. He was just on the edge of the road, the outside edge of the road.

98. Q. Yes, but how far approximately?

A. About 4' or something like that.

99. Q. Which way was he lying?

A. He was lying here (indicated) his head uphill, legs down towards the field.

EXHIBIT 1.

Sketch.

19

(Exhibit 1 was shown and explained to the Jury.)

100. Q. Had you been under the Doctor's care at any time previous to the accident?

A. No, Sir. I have been under the Doctor's care since the Friday. He came in to see me on Saturday.

101. Q. Was that the Saturday prior to the accident?

A. Before.

102. Q. The Saturday before the accident he came in to see you?

A. Yes.

103. Q. Had he given you treatment, told you what to do?

A. Yes, to stay in bed until Sunday, then start working next week.

104. Q. You went to work on Sunday?

A. Yes, I went to work on Sunday.

105. Q. Could you explain the nature of your illness?

A. Well, he said that I had a cold, that is all I recall him saying, a bad cold and tiredness included. So that made me dizzy when I was in bed too.

Coroner.
106. Q. Are there any questions the Gentlemen of the Jury would like to ask the witness?

WITNESS ASIDE.

20

TANAKA, Mitsuaki, a witness herein called by the Crown, first having been duly SWORN, testified as follows:

Coroner.

107. Q. What is your full name?

A. Mitsuaki Tanaka.

108. Q. Where do you live?

A. In Kaslo, British Columbia.

109. Q. What is your occupation, what do you work at?

A. I was a garbage boy at that time.

110. Q. Do you remember Tuesday, the 14th July last?

A. Yes, I do.

Constable Glaholm

111. Q. At approximately 4:30 on that date where were you?

A. At the top of graveyard hill.

112. Q. Who was driving the truck at the time?

A. When we stopped Dave told S. 22 to take over. I didn't think Dave was in any physical condition to drive the truck.

113. Q. Did he ask S. 22 to take the truck over?

A. Yes, he did.

114. Q. When S. 22 took the truck over where did you go then?

A. We put the fellows on the back, the two fellows, and then we went down the graveyard hill.

115. Q. Towards Kaslo?

A. Yes.

116. Q. Coming down the hill, about how fast do you figure the truck was travelling?

A. I think about 40 to 50.

117. Q. Did you see anyone on the roadway at all coming down the hill?

A. About halfway I thought I saw Mr. Onishi.

118. Q. When you were halfway down?

A. The truck was.

119. Q. Where did you see him?

A. Standing beside the road beside the curve.

120. Q. That is the corner marked Stephenson's corner on the sketch, Exhibit 1?

A. Yes.

121. Q. That is Stephenson's corner?

A. Yes.

122. Q. Upon reaching Stephenson's corner did you still see Mr. Onishi still standing there?

A. I don't recall it.

123. Q. What happened when you reached the corner?

A. We were travelling pretty fast. Then I heard Dave say something about the truck pedal, but I didn't take any interest in the statement which Dave said.

124. Q. You were sitting in the front seat of the car?

A. Yes, I was.

125. Q. What happened when you got to the corner? Can you remember that when you arrived at the corner?

A. I don't think that truck would make the corner at the turn.

126. Q. Did it make the corner?

A. No, it didn't. It skidded.

127. Q. What happened when he didn't make the corner?

A. Well, we went through the wire fence into the tree. That is all I know.

22

128. Q. Just went through the wire fence and hit the tree?

A. Yes.

129. Q. What did you do after you hit the tree?

A. I got off the truck and saw Mr. Onishi lying on the ground.

130. Q. Was he close to the road where he was lying?

A. Pretty close.

131. Q. About how far would you say, just approximately?

A. About 4' or 5' from the road.

Coroner.

132. Q. Was Mr. Onishi standing on the side of the road or on the travelled portion of the road?

A. I think standing on the grass.

133. Q. But on the public highway, it was on part of the roadway?

A. Not inside the fence.

134. Q. He was not inside the fence?

A. No, he was not.

135. Q. Do the Gentlemen of the Jury wish to ask this witness any questions?

WITNESS ASIDE.

23

FURUKAWA, Minoru, a witness herein called by the Crown, first having been duly SWORN, testified as follows:

Coroner:

136. Q. What is your full name?

A. Minoru Furukawa.

137. Q. You live in Kaslo, British Columbia?

A. Yes.

138. Q. What do you do?

A. I was farmer.

139. Q. You work on a farm?

A. Yes.

Constable Glaholm.

140. Q. Do you remember July 14th at approximately 4:30 p.m?

A. Yes.

141. Q. Where were you at that time?

A. I was in the back of the truck.

142. Q. Where was the truck?

A. Coming down the hill,

Coroner

143. Q. What hill?

A. Cemetery Hill.

144. Q. You were sitting on the back of the truck coming down Cemetery Hill?

A. Yes.

Constable Glaholm.

145. Q. About how fast would you say the truck was travelling?

A. I don't know.

146. Q. You do not know how fast it was travelling?

A. No.

24

Coroner.

147. Q. Was it going fast or slow?

A. Ordinary.

148. Q. What would you estimate ordinary speed to be? How many miles an hour?

A. I don't know.

149. Q. Would you call 30 miles an hour ordinary speed?

A. Same as every day coming down the hill.

150. Q. Would you call 30 miles an hour average speed for every-day?

A. I think so.

151. Q. Would you say that the truck, on last July 14th, was going about 30 miles an hour coming down the hill, or more than that?

A. A little bit more than that.

152. Q. Would it be 40 miles an hour would you think?

A. I don't know. Somewhere around 35, that is what I think.

Constable Glaholm.

153. Q. Did you know who was driving the truck?

A. No, Sir.

154. Q. You were riding in what part of the truck?

A. In the back, way inside.

155. Q. In the box at the back of the truck?

A. Yes.

156. Q. Did you see anyone standing on the roadway at all?

A. No.

Coroner.

157. Q. Which way were you sitting? Which way were you looking?

A. Sideways.

158. Q. Could you see outside what was going on?

A. No, Sir.

159. Q. Why could you not see anything?

A. I was sitting down.

160. Q. Was there a wall on the side of the truck?

A. Wall on both sides.

161. Q. And you could not see?

A. No.

Constable Glaholm.

162. Q. You did not see anyone at all?

A. No.

163. Q. All that you knew was, that you were going down the hill and travelling about 35 miles an hour?

A. I think so.

164. Q. Did you feel anything when you came to the corner?

A. Just a bump.

165. Q. You felt a bump?

A. Yes, going off the road. I tried to hang on.

166. Q. When you felt the bump what did you do?

A. Tried to hang on.

167. Q. Did you see anything at all after you tried to hang on until the time the truck stopped?

A. No, Sir.

168. Q. Do you know where the truck stopped?

A. Right against the tree. I saw when I got out of the truck.

Coroner.

169. Q. When you tried to hang on, were you able to, or were you thrown? What happened?

A. I hung to the side of the wall.

26

170. Q. You were not thrown out, and you were not thrown against the side of the truck?

A. No, Sir.

Constable Glaholm.

171. Q. After you left the road and hit the tree, the truck stopped? What did you do then?

A. I got off the truck.

172. Q. What did you do?

A. Everybody was crowding around. I saw Mr. Onishi lying on the ground.

173. Q. Where did you see him lying on the ground?

A. On the corner.

174. Q. The corner of the road?

A. Yes, Sir.

175. Q. That would be the corner where the truck came off the road into the tree? It was the same corner, was it when the truck went off the road that you saw Mr. Onishi lying there?

A. Yes.

176. Q. How far would it be from the travelled portion of the road there, that is, the edge of the road?

A. I don't know.

177. Q. Well, you went over and looked at him?

A. Yes, Sir.

178. Q. Did you not notice how far he would be from the corner of the road from where he was lying down? How many feet it would be? Was it a long distance or a short distance?

A. A short distance.

179. Q. Would that be a few feet or yards, or how far would it be?

A. Around 5'.

180. Q. On which side of the road was he lying?

A. Right-hand side coming down the hill.

181. Q. On the corner?

A. At the corner.

Jury.

182. Q. Is the box a closed box or just slats.

A. The back is nothing.

183. Q. What are the sides? Slats?

A. The top of the box is slats, boards.

Constable Glaholm.

184. Q. The bottom part is all closed in? You could not possibly see anything?

A. Yes, Sir.

Jury.

185. Q. You were sitting on the floor?

A. Yes, Sir.

Coroner.

186. Q. Are there any other questions the Jury wish to ask this witness?

WITNESS ASIDE.

HARKLEY, Clarice, a witness herein called by the Crown, first having been duly SWORN, testified as follows:

Coroner.

187. Q. What is your full name?

A. Clarice Harkley.

188. Q. You live in Kaslo?

A. Yes.

189. Q. What is your occupation?

A. Housewife.

28

190. Q. Do you remember Tuesday, the 14th of July last?

A. Yes.

191. Q. Did you observe a motor accident, or at least a car travelling very fast into Kaslo?

A. No, we were going away from the town on the roadway.

192. Q. You saw a truck travelling very fast?

A. Yes.

Constable Glaholm.

193. Q. How fast would you say that truck was going?

A. Definitely not less than 50 miles an hour.

194. Q. When did you first notice the truck?

A. He was just over the brow of the hill when we first saw him.

Coroner.

195. Q. That is Cemetery hill?

A. Yes.

Constable Glaholm.

196. Q. Did you notice anything peculiar about the truck as it was coming down the hill?

A. He was going from side to side of the road, and swaying quite badly, so much so that I mentioned it. In fact, called out to my companion: "Good heavens, look at that." I called out to her to jump.

197. Q. You told her to get out of the way?

A. I said: "Good heavns, look at that." I pushed my baby off the road.

198. Q. Were you very far from the corner where the accident took place when you first noticed the truck?

A. 15' to 20'.

199. Q. You were practically right on the corner?

29

A. Yes, on the road. The pavement ends there, and we stepped off on to the road.

Coroner.

200. Q. Would that be on the D Avenue side of the corner or the Brennand side of the corner?

A. On the right-hand side going up.

Constable Glaholm.

201. Q. Did you notice anyone standing on the corner?

A. No.

202. Q. You did not see Mr. Onishi?

A. Was he on the back of the truck? No, I never saw any one.

203. Q. No, on the corner?

A. Just as the truck passed I called out to the driver and turned my head sharply, and saw him there then, practically at the same moment that he was hit. We were so near the corner that we turned our head as we passed. I saw him first as he went down.

204. Q. Did you see the truck strike him?

A. No, but I saw him lifted through the air.

205. Q. How could you see him? You were on the right-hand side of the road, and he was on the opposite side?

A. Because he was thrown behind the truck.

206. Q. In other words, you saw Mr. Onishi going through the air, as you term it, and the back end of the truck at the same time? Is that what you mean?

A. Yes. As the truck passed me, as the truck turned the corner I saw him thrown away from the truck.

207. Q. How fast would the truck be going, in your estimation, at the corner?

A. He never slowed down at all from coming down the hill.

30

208. Q. Did he try to turn the corner?

A. Yes.

209. Q. What happened?

A. Well, I have no recollection of what happened to the truck after I saw the man, because my eyes were concentrated on him, and I called out to Helga and rushed towards him, and I have no idea what happened to the truck.

210. Q. What did you do then?

A. I ran towards him, and called to Helga to go and fetch the Doctor. We saw immediately that he had not got up, and as I got to him the Japanese boys reached him on the other side. I asked them not to lift him. Somebody fetched me some water, and I bathed the blood out of his eyes. I asked somebody to go for the nurse. We could not get the Doctor at the time, and covered him with a blanket. When the nurse came I left.

211. Q. Do you know whether they got in touch with the Doctor or not, and how?

A. Not for a moment or two because they ran up to my house to phone, and came back and said they could not find the Doctor. Somebody else went up to phone a minute or two later. I do not know whether they did find him eventually.

212. Q. Your house is close to the corner?

A. A block and a half.

213. Q. From where the accident took place?

A. Yes.

214. Q. Did the Doctor arrive there eventually?

A. I had left before he arrived. I left as soon as the nurse and mounted Policeman arrived.

Jury.

215. Q. Did it appear that the man was struck by the front or the rear of the truck?

A. The rear of the truck.

216. Q. The rear of the truck swung and hit him?

A. The rear swung round.

Coroner.

217. Q. Any other questions the Gentlemen of the Jury wish to ask the witness?

WITNESS ASIDE.

AUGUSTINE, Helga, a witness herein called by the Crown, first having been duly SWORN, testified as follows:

Coroner.

218. Q. What is your full name?

A. Helga Augustine.

219. Q. Are you living in Kaslo?

A. Yes.

220. Q. What do you do, go to school?

A. Yes.

220. Q. Do you remember the afternoon of Tuesday, July 14th last?

A. Yes.

221. Q. You were walking along D Avenue near Stephenson's corner?

A. Yes.

222. Q. You were going away from Kaslo?

A. Yes.

223. Q. You saw a truck coming down the hill very rapidly?

32

A. Yes.

Constable Glaholm.

224. Q. About how fast was the truck travelling, Helga, in your estimation? Was it going slow or was it going fast?

A. No, it was going very fast.

225. Q. It was going very fast?

A. Yes.

226. Q. Did you notice anything peculiar about the truck as it was coming down the hill?

A. It was swerving from side to side.

227. Q. When the truck passed you, did you think it was going any faster or any slower than when you first noticed it?

A. I think it was just going the same.

228. Q. At the end, the same speed?

A. Yes.

229. Q. Did you notice anyone on the road?

A. Yes, I noticed a man down at the corner.

230. Q. A Japanese?

A. Yes.

231. Q. What was he doing?

A. Bending over, I thought.

232. Q. Which way was he facing bending over? Which way was his head facing?

A. Towards the cemetery.

233. Q. Up the hill?

A. Yes.

Coroner.

234. Q. Was he working there?

A. No, he was standing there.

33

Constable Glaholm.

235. Q. You have just said he was bending over?

A. Yes.

236. Q. He was just standing bent over?

A. Yes.

Coroner.

237. Q. Was he picking flowers?

A. It seemed to me he had something on his back, some load or something.

238. Q. He was carrying something on his back?

A. Yes.

239. Q. Was he adjusting his load on his back? Is that why he was stooping instead of standing up straight?

A. He was bent over. (indicated)

240. Q. He did not seem to be doing anything in particular, just adjusting the load on his back?

A. Yes.

Constable Glaholm.

241. Q. You saw him before the truck reached the corner?

A. Yes.

242. Q. When the truck reached the corner did you notice anything then?

A. I saw the car going into Mr. Spier's orchard, into the tree.

Coroner.

243. Q. The car then did not make the turn, it left the road?

A. Yes.

Constable Glaholm.

244. Q. Did you see Mr. Onishi as the truck passed?

A. No.

246. Q. You did not see him after the truck came between you and him?

34

A. No.

247. Q. You were standing on the other side of the road?

A. I did not see him. I was a little further up than Mrs. Harkley.

248. Q. And you did not see Mr. Onishi at all after the truck passed and went through the corner instead of turning the corner?

A. I saw him lying there after he was hit.

Coroner.

249. Q. Saw him lying on the ground after he was hit?

A. Yes.

Constable Glaholm.

250. Q. You did not see him hit?

A. No.

251. Q. Which side of the road was he standing on?

A. The right side.

252. Q. The right side of the road going down the hill?

A. Yes.

Coroner.

253. Q. Facing towards Kaslo or facing up towards Cemetery Hill?

A. Towards Cemetery Hill.

254. Q. He was facing up the road, away from Kaslo?

A. Yes.

Constable Glaholm.

255. Q. Do you know how far from the corner of the road, or was he standing on the road, or just off the road?

A. 5 feet off the road.

256. Q. You would say he was standing about 5 feet off the road?

A. Yes.

257. Q. You would say he was standing about 5 feet off the road?

A. Yes.

258. Q. What did you do after you saw him lying on the side of the road?

A. I went for the doctor.

259. Q. Where did you go?

A. I went to Mrs. Harkley's house.

260. Q. Did you phone from there?

A. Yes.

10 Coroner.

261. Q. Do you think that Mr. Onishi would see the truck coming?

A. I think he would.

262. Q. If he was facing up the road towards Cemetery Road you would suppose that he would see the truck coming, wouldn't you?

A. Yes.

263. Q. Are there any other questions the Gentlemen of the Jury wish to ask the witness?

20 WITNESS ASIDE.

Adjournment was taken at 6:15 p.m.
for dinner.

7:30 p.m. Coroner's Inquisition resumed.

Coroner.

30 Gentlemen of the Jury, you have heard all the evidence the Crown has to offer. It is the duty of a Coroner's Jury to determine where, when, how and after what manner the deceased met his death. You may now retire to consider your Verdict. (Jury retired.)

36 ✓

VERDICT:

Jukichi Onishi came to his death on the 20th day of July, 1942, as a result of an accident on the afternoon of the 14th day of July, 1942, at about 4:30 p.m., at Stephenson's Corner, in the City of Kaslo, in the County of Kootenay, in the Province of British Columbia. The accident occurred from the deceased being hit by a truck owned and operated by the B. C. Security Commission, and at the time being driven by S. 22, a minor; who was asked to take over by the official driver, Masawa Murakami, a short time before the accident occurred, on account of an attack of dizziness recurrent from an illness of a few days previous. That the truck was travelling at an excessive rate of speed for such a grade and sharp turn at the bottom, making it impossible to make the turn. The rear of the truck apparently struck the deceased when leaving the main travelled road. Death resulting from an injury to the left side of the head. We, the Jury, consider the death was accidental.

I CERTIFY the foregoing 32 pages to be an accurate transcript of my notes of the within Coroner's Inquisition into the death of Jukichi Onishi.

Emily Hamson

Sworn Stenographer.