

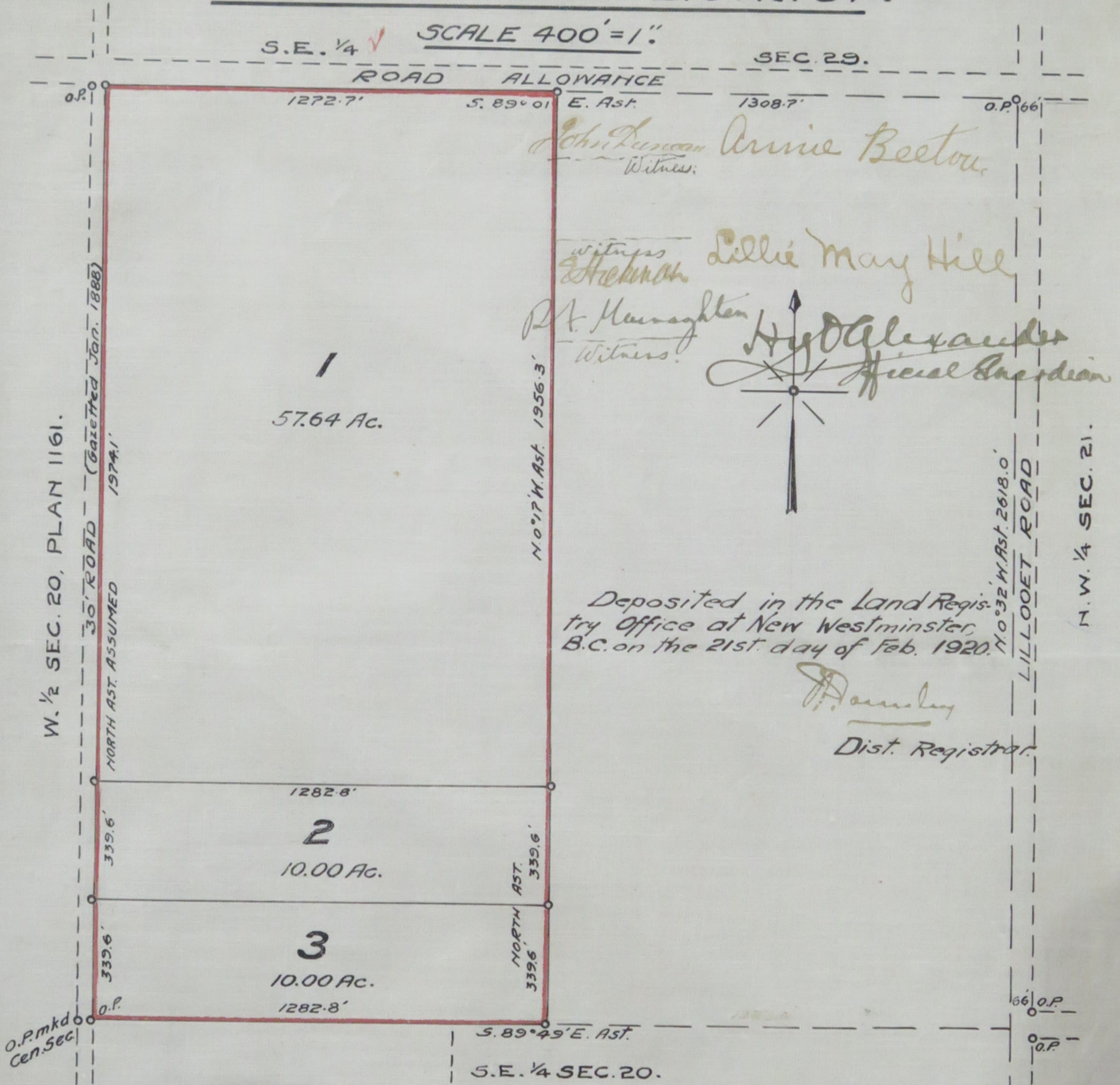
3/89

reference
12791 E.

PLAN OF SUBDIVISION OF 77.64 ACRE PORTION

N.E. 1/4 SECTION 20, TOWNSHIP 12.

NEW WESTMINSTER DISTRICT.



Deposited in the Land Registry Office at New Westminster, B.C. on the 21st day of Feb. 1920.

Dist. Registrar.

Approved under the Land Registry Act.
Dated this 17th day of ^{Feb} January 1920.

William H Ansell

Reeve of Municipality of Maple Ridge.

I hereby certify that all taxes assessed against this property have been paid to Dec 31st 1920.

Dated this 17th day of Feb 1920.

J. F. Anderson
Asst Municipal Clerk.

I, D.J. McGugan, of the City of New Westminster, Province of British Columbia, a British Columbia Land Surveyor, make oath and say that I was present at and did personally superintend the survey represented by this plan and that the survey and plan are correct.

The said survey was completed on the 3rd day of December, 1919.

Sworn before me this 9th day of ^{January} ~~December~~ 1920.

S & Mark.

A Notary Public in and for the Province of British Columbia.

BURNETT & MCGUGAN.
C.E. DOM. & B.C. LAND SURVEYORS.
NEW WESTMINSTER, B.C.