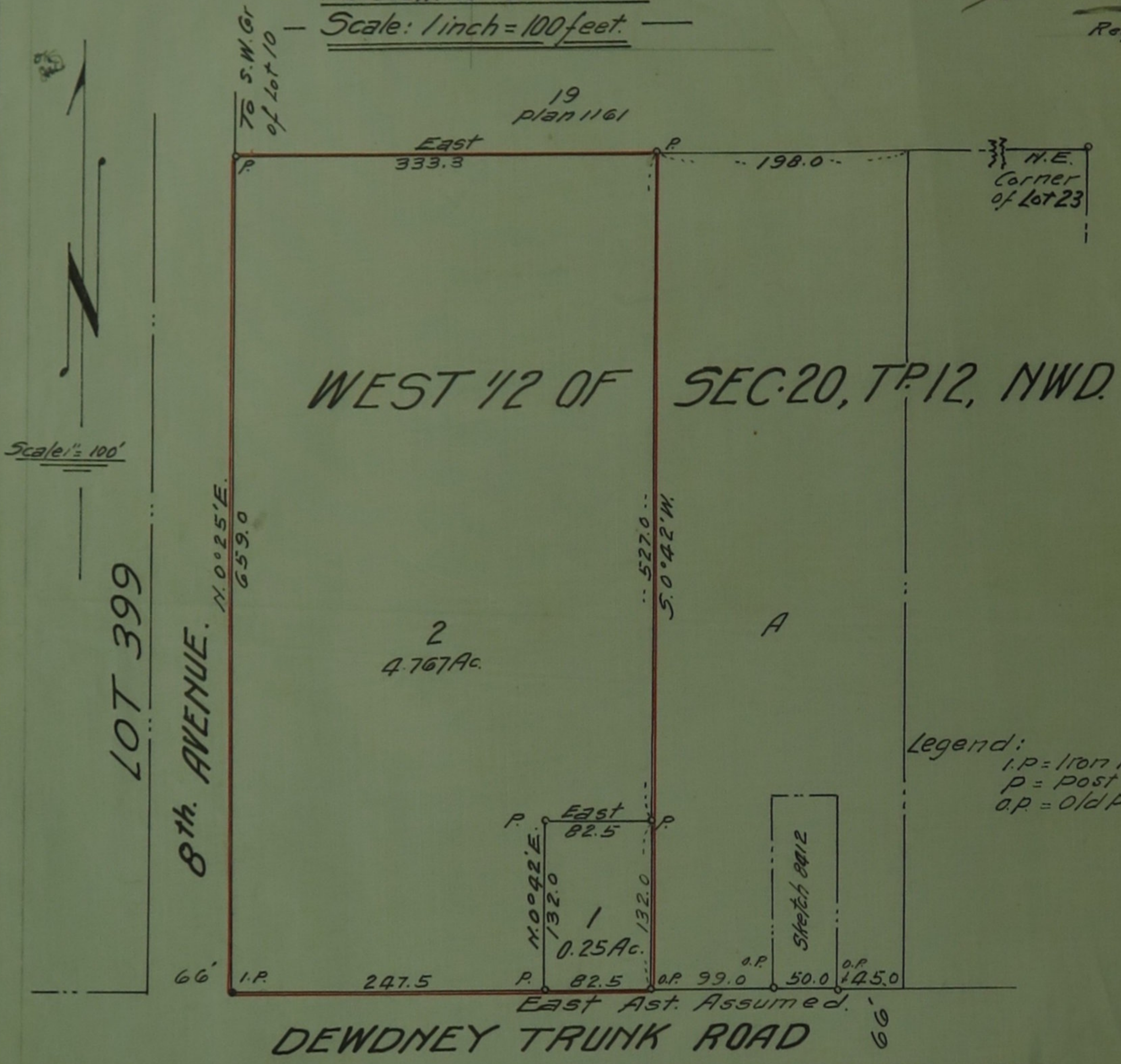


— PLAN OF SUBDIVISION OF —
 — A 5.0 ACRE PORTION OF —
 — THE WEST 1/2 OF SECTION 20 TOWNSHIP 12 —
 — NEW WESTMINSTER DISTRICT. —

Ref. 24458 E. **6686**
 Deposited in the Land Registry Office at New Westminster, B.C. on the 12th day of April, 1941
E. S. Notch
 Registrar

— Pursuant to 24458 E. —
 — Scale: 1 inch = 100 feet. —



Legend:
 I.P. = Iron Post Set
 P = Post Set
 O.P. = Old Post.

I, Vernon Edge of Haney British Columbia Land surveyor make oath and say that I was present at and did personally superintend the survey represented by this plan and that the survey and plan are correct. The said survey was completed on the 2nd day of April 1941.

Sworn before me this 4 day of April 1941 } *Vernon Edge.*

H. Menzies A Notary public in and for the province of British Columbia

W. W. Macaulay
 Registered Owner *H. Christensen*
 Witness *H. Menzies*

Approved under the 'Land Registry Act' this 4th day of April 1941

M. M. ... Approving Officer