

EXPLANATORY PLAN

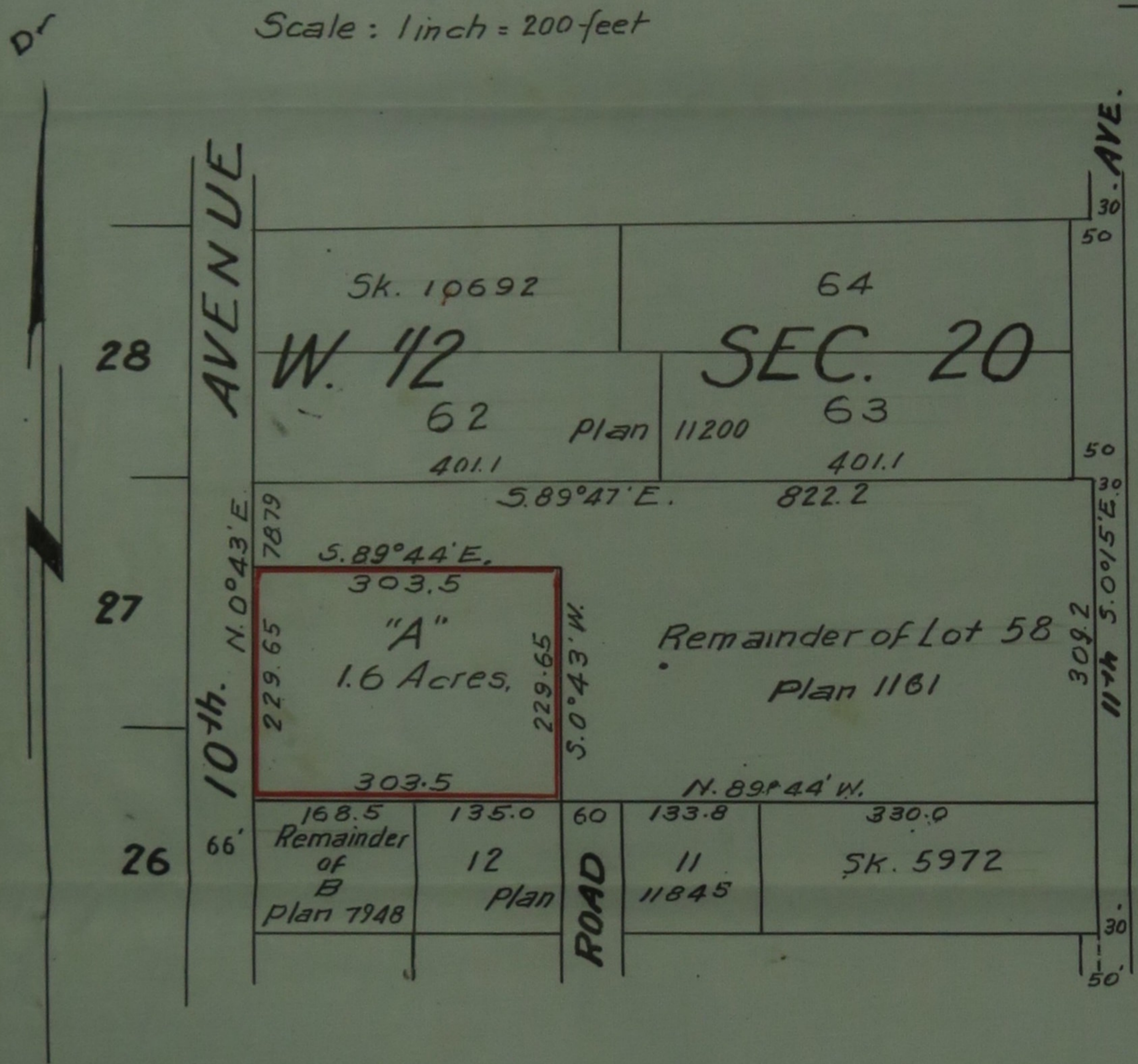
13564
APP. 320825E

PLAN OF PORTION OF
LOT 58
OF THE WEST 1/2 OF SECTION 20
TOWNSHIP 12
NEW WESTMINSTER DISTRICT

Deposited in the Land Registry Office at
New Westminster, B.C. this 3rd day
of December 1953

Pursuant to Registered Plan 1161
Scale: 1 inch = 200 feet

A.A. Milledge Registrar
Per RB



Certified correct and according
To Land Registry Office records
Dated this 3rd day of } V Edge.
September 1953 } B.C.L.S.

Approved under the Land Registry Act
This 8 day of Sept 1953
Reeve of Maple Ridge
Approving Officer

THE DIRECTOR

The Veterans Land Act
H. W. Ruthenford
H. W. Ruthenford
W. T. W. 1953