

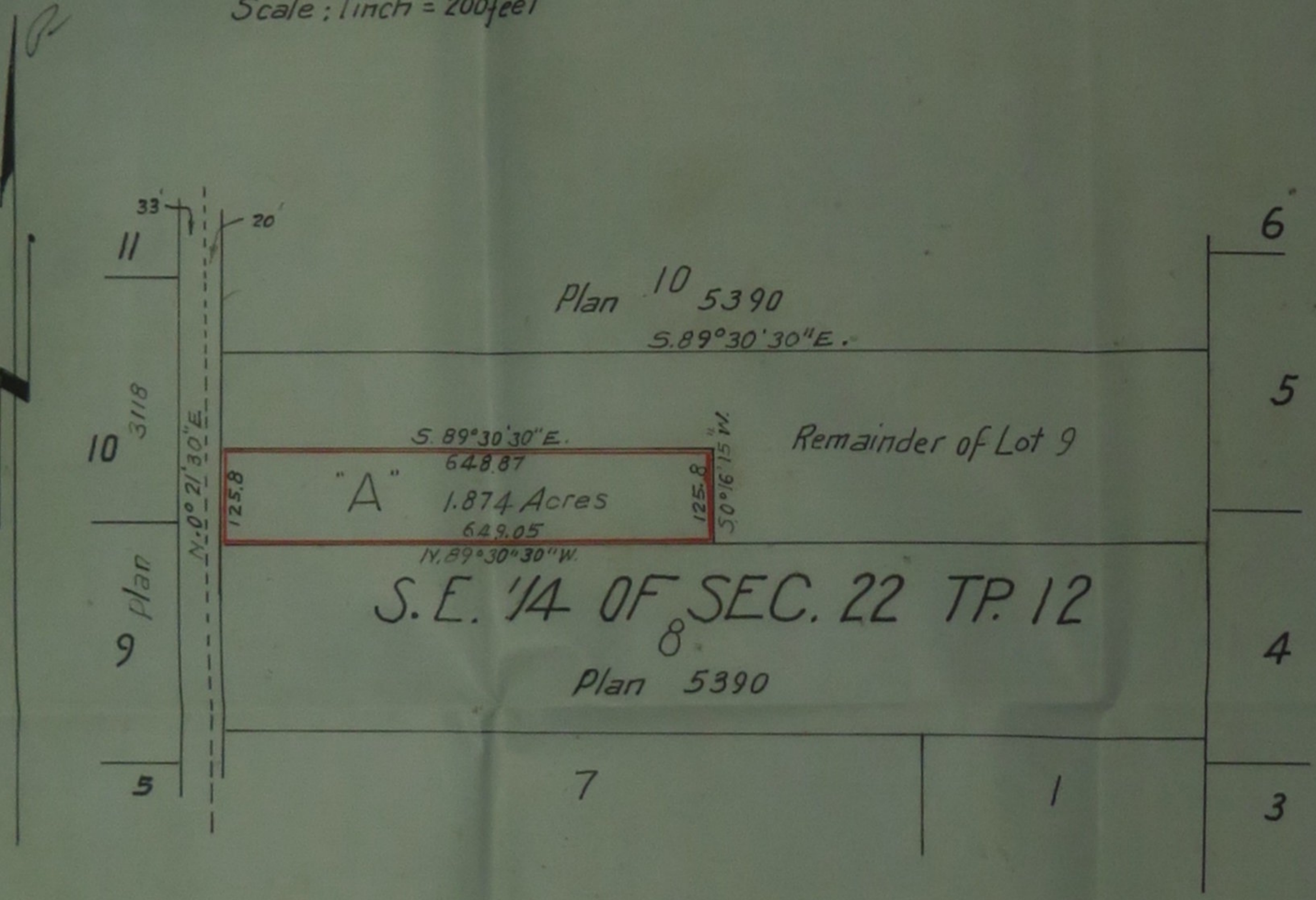
PLAN OF PORTION OF  
BLOCK 9 OF THE WEST 1/2  
OF THE SOUTH EAST 1/4 OF  
SECTION 22 TOWNSHIP 12  
NEW WESTMINSTER DISTRICT

Pursuant to Registered Plan 5390  
Scale: 1 inch = 200 feet

EXPLANATORY PLAN  
16639  
App. 250504c

Deposited in the Land Registry Office at  
New Westminster B.C. this 8<sup>th</sup> day  
of April 1959

A.A. McLeod, Registrar



Certified correct and according  
to Land Registry Office Records.

Dated this 14<sup>th</sup> day } Vernon Edgell  
of February 1959 } B.C.L.S.

Approved under the Land Registry Act  
this 6<sup>th</sup> day of March 1959

J.P. Smith, Engineer for Maple Ridge  
Approving Officer

Registered Owner Joseph M. Comeau  
Witness A. M. [Signature]