

PLAN OF SUBDIVISION OF
 LOT 34
 OF THE WEST 1/2 OF SECTION 20
 TOWNSHIP 12
 NEW WESTMINSTER DISTRICT

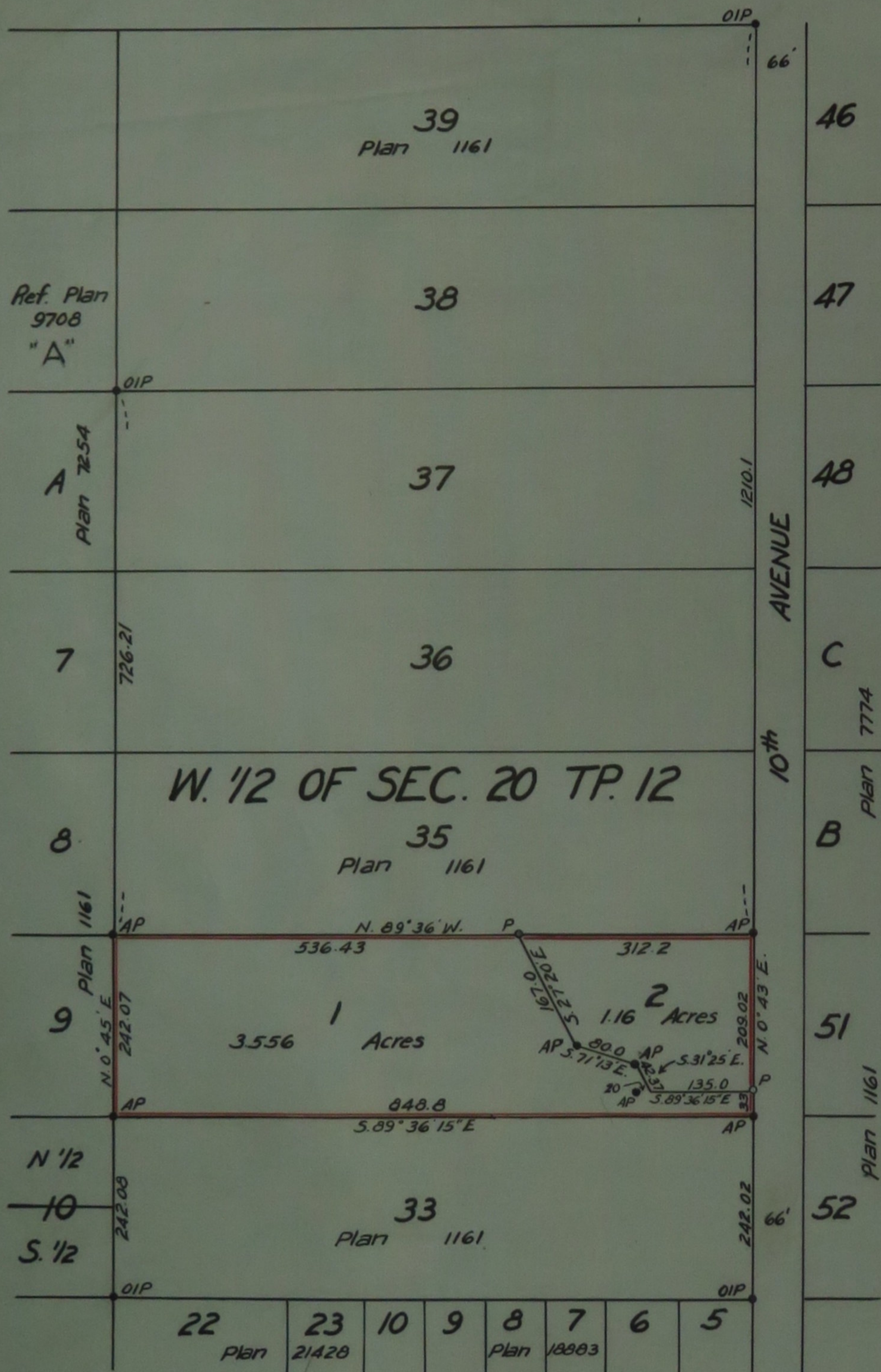
Pursuant to Registered Plan 1161
 Scale: 1 inch = 150 feet

22332

Ref. 458734E

Deposited in the Land Registry Office at
 New Westminster, B.C. this 13th day
 of October 1962.

[Signature]
 Registrar



Legend:
 ○ OIP - Old iron post found
 ○ AP - Aluminum post set
 ○ P - Cedar post set
 Bearings east and derived
 from Plan 18883

I, Vernon Edge, of Honey B.C. a British Columbia Land
 Surveyor make oath and say that I was present at
 and did personally superintend the survey represented
 by this plan and that the survey and plan are correct.
 The said survey was completed on the 25th day of
 August 1960

Sworn before me this 26th day of August 1960
Vernon Edge

H. Menzies A Notary Public in and for the
 Province of British Columbia

Approved under the Land Registry Act
 this 30th day of August 1960

R. J. [Signature] Reeve of Maple Ridge
 Approving Officer

NORTH FRASER INVESTMENTS LTD.

President *W. E. [Signature]*

Secretary Director *[Signature]*