

PLAN OF SUBDIVISION OF
PORTION OF LOT M OF THE WEST 1/2
OF SECTION 20 TOWNSHIP 12
NEW WESTMINSTER DISTRICT

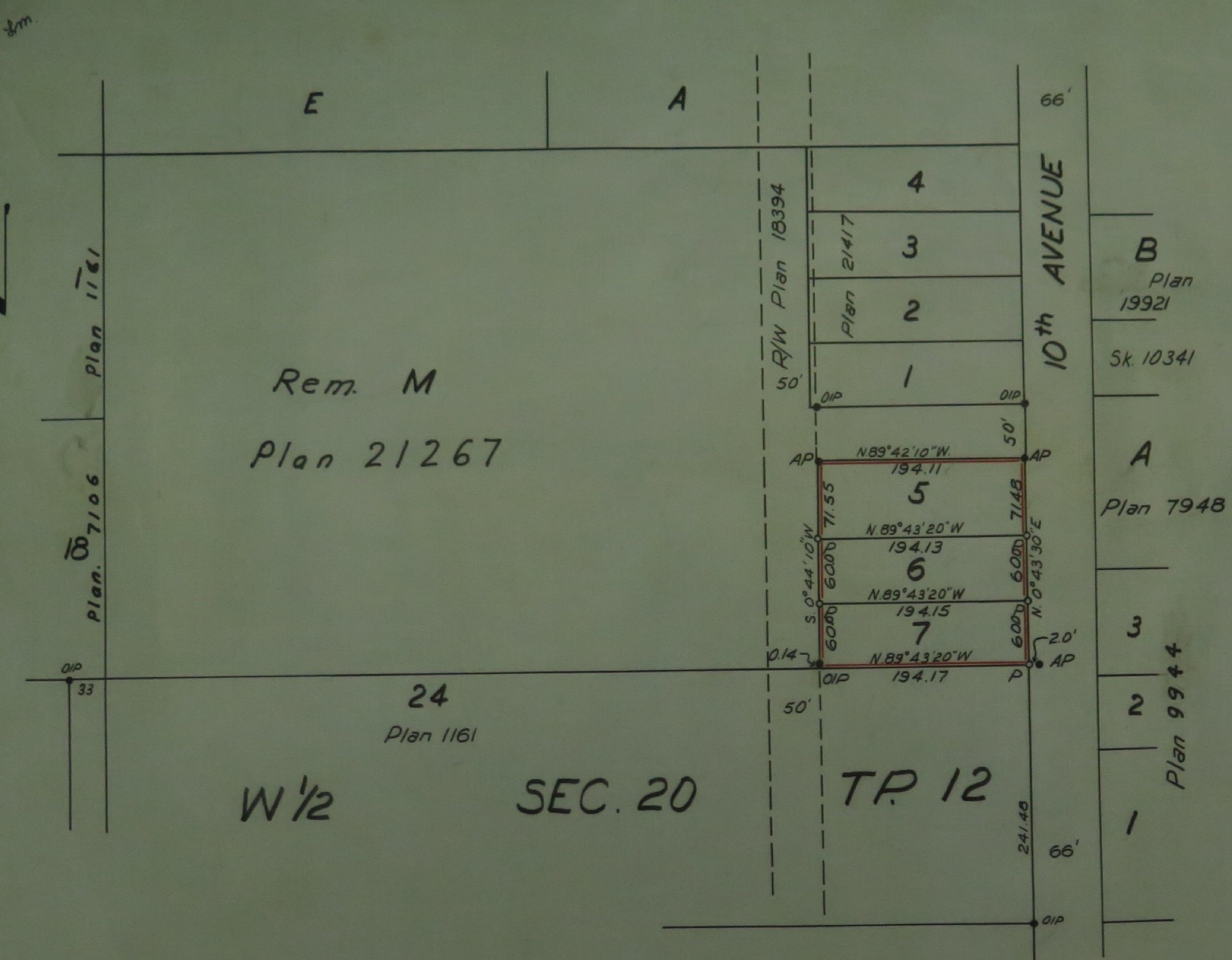
Pursuant to Registered Plan 21267
Scale: 1 inch = 100 feet

23392

Ref. 478403E

Deposited in the Land Registry Office at
New Westminster, B.C. this 22nd day
of August 1961.

[Signature]
Registrar



Legend

- OIP - Old iron post found
 - AP - Aluminum post set
 - P - Cedar post set
- Bearings ast. and derived
from 10th avenue Plan 18394

I, Vernon Edge, of Haney, B.C. a British Columbia Land
Surveyor make oath and say that I was present at
and did personally superintend the survey represented
by this plan and that the survey and plan are correct.
The said survey was completed on the 31st day of
July 1961

Sworn before me this 22nd day of August 1961
[Signature] Vernon Edge

[Signature] A Notary Public in and for the
Province of British Columbia

Approved under the Land Registry Act
This 22nd day of August 1961

[Signature] Revere of Maple Ridge
Approving Officer

Board of School Trustees
School District No 42 (Maple Ridge)

Chairman *[Signature]*
Secretary *[Signature]*