

SUBDIVISION PLAN OF PART OF LOT 17 OF THE  
SECTION 2 TOWNSHIP 12 PLAN 1208  
NEW WESTMINSTER DISTRICT

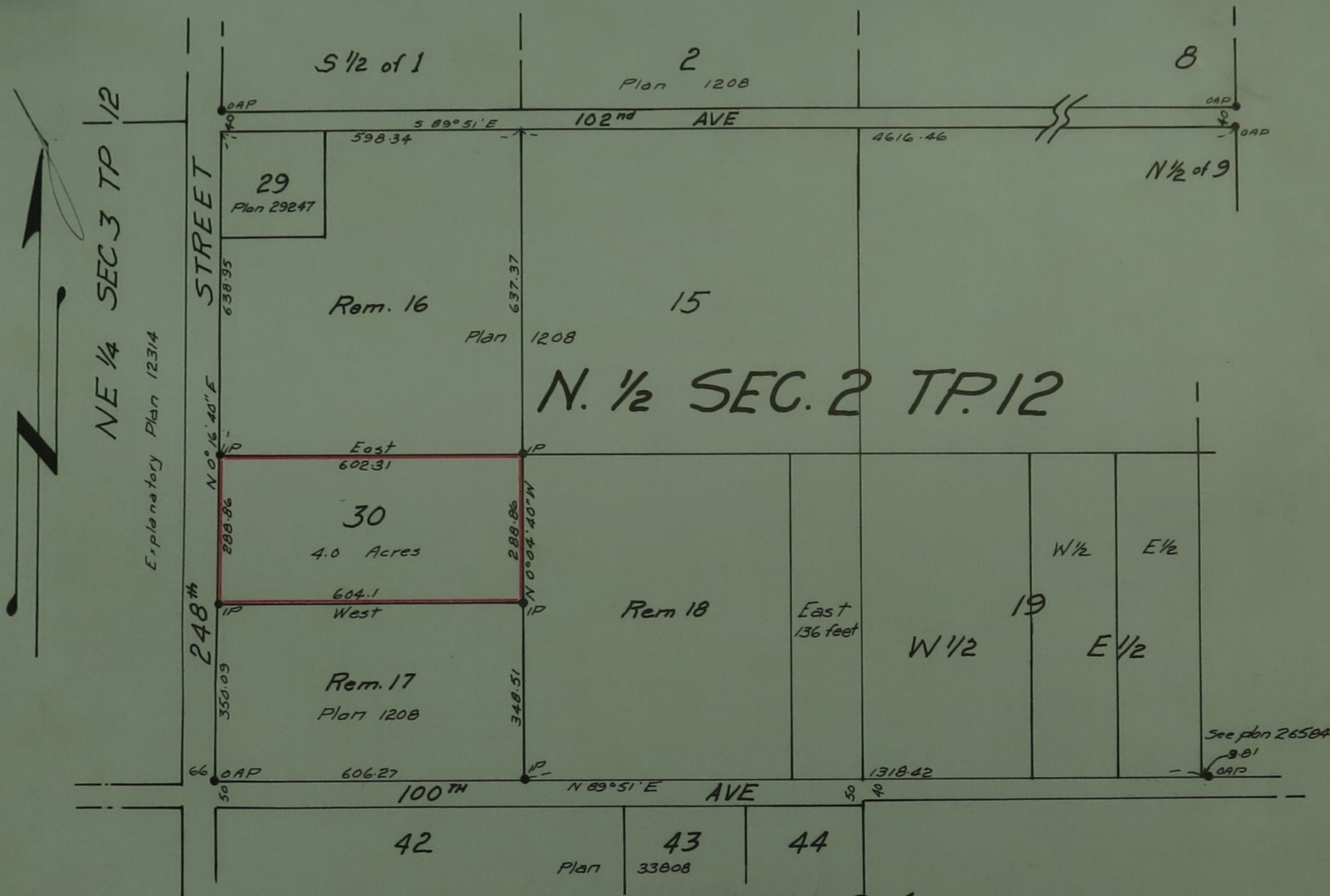
Scale 1 inch - 200 feet.

36818

Pl 4953678

Deposited in the Land Registry  
Office of New Westminster, B.C.  
this 19 day of JAN 1970

*W. J. ...*  
Registrar.



I, J.M.C. Wade of Honey B.C., a British Columbia Land Surveyor  
make oath and say that I was present at and did personally  
superintend the survey represented by this plan and that  
the survey and plan are correct. The said survey was  
completed on the 15<sup>th</sup> day of January 1970.

*J.M.C. Wade*

J.M.C. Wade, B.C.L.S.

Sworn before me  
this 16<sup>th</sup> day of  
January 1970

A Notary Public in and for the  
Province of British Columbia.

*D.L. 432 Gp 1*

Approved under the Land Registry Act  
this 16<sup>th</sup> day of January 1970

*J.D. Robertson*

Engineer - Approving Officer  
Maple Ridge Municipality

This plan lies within the Dewdney-  
Alouette Regional District.

Legend.

- OAP - Old Aluminum post found
- IP - Iron post set.

Bearings are astronomic and are  
derived from Plan 26584

Owner - *G. Kimola*  
Witness - *Josef Ordunau*