

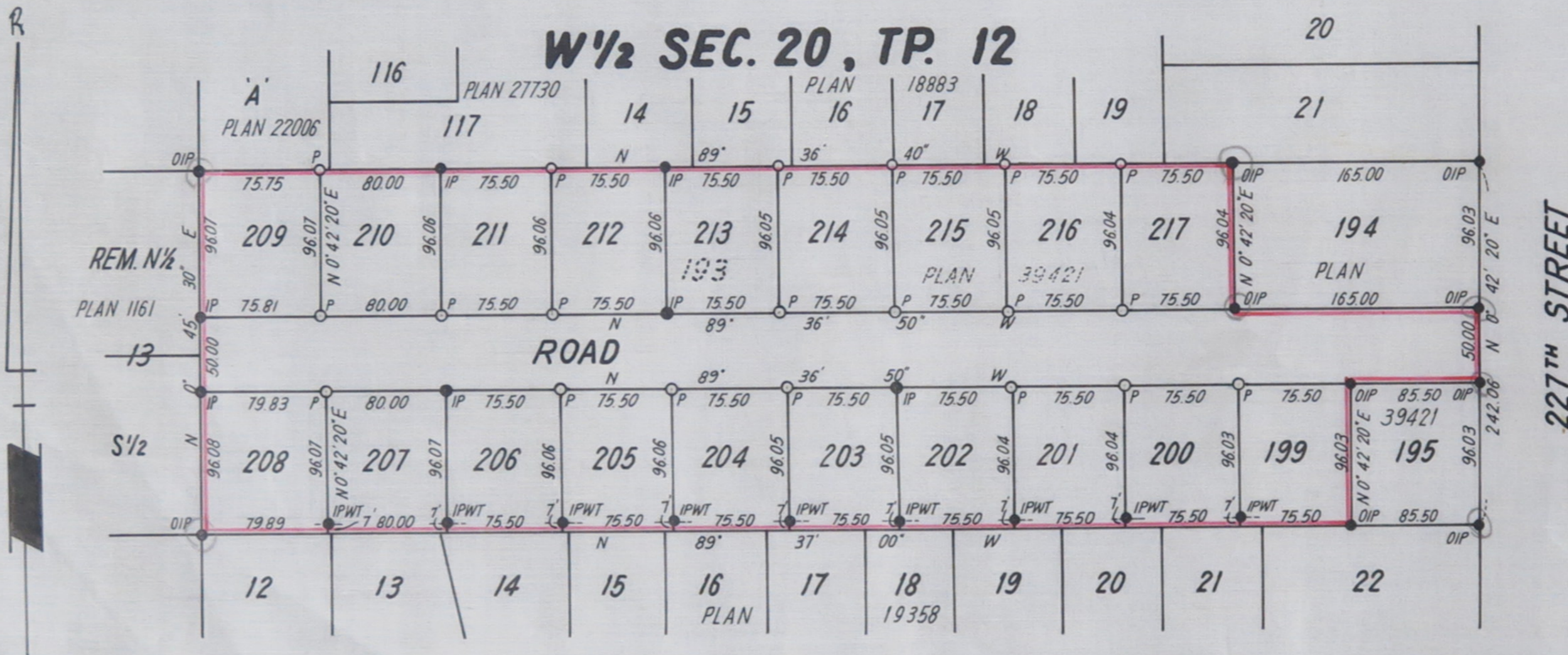
**SUBDIVISION PLAN OF LOT 193  
OF THE WEST 1/2 OF SECTION 20,  
TOWNSHIP 12, PLAN 39421,  
NEW WESTMINSTER DISTRICT.**

SCALE: 1 INCH = 100 FEET

**LEGEND:**

BEARINGS ARE ASTRONOMIC AND ARE DERIVED FROM PLAN 39421.

- DIP INDICATES OLD IRON POST FOUND.
- IP INDICATES IRON POST SET.
- P INDICATES WOODEN POST SET.
- WT INDICATES WITNESS.



APPROVED UNDER THE LAND REGISTRY ACT.  
THIS 22<sup>ND</sup> DAY OF JULY 1971.

*J. D. Robertson*  
APPROVING OFFICER  
MUNICIPALITY OF MAPLE RIDGE.

**THIS PLAN LIES WITHIN THE DEWDNEY  
ALOUETTE REGIONAL DISTRICT.**

BARRY ALLAN, B.C.L.S.  
212 COLLEGE PARK WAY  
PORT MOODY, B.C.  
TEL: 936-9193

FILE: 1110

PLAN 39659

725736<sup>E</sup>

DEPOSITED IN THE LAND REGISTRY OFFICE  
AT NEW WESTMINSTER, B.C.  
THIS 27 DAY OF JULY 1971.

*M. Bellway*  
REGISTRAR

OWNER: COLISEUM HOLDINGS LTD.

*Alfred SEC TRIAS*

MORTGAGEE:

*M. Hadenbrocker*  
*Barry Allan*  
WITNESS

I, BARRY ALLAN OF PORT MOODY, BRITISH COLUMBIA, BRITISH COLUMBIA  
LAND SURVEYOR, MAKE OATH AND SAY THAT I WAS PRESENT AT AND DID  
PERSONALLY SUPERINTEND THE SURVEY REPRESENTED BY THIS PLAN  
AND THAT THE SURVEY AND PLAN ARE CORRECT. THE SAID SURVEY  
WAS COMPLETED ON THE 12<sup>TH</sup> DAY OF JULY, 1971.

*Barry Allan*  
SWORN BEFORE ME THIS 13<sup>TH</sup> DAY OF JULY 1971. B.C.L.S.

*John R. Best*  
A COMMISSIONER FOR TAKING AFFIDAVITS WITHIN BRITISH COLUMBIA.