

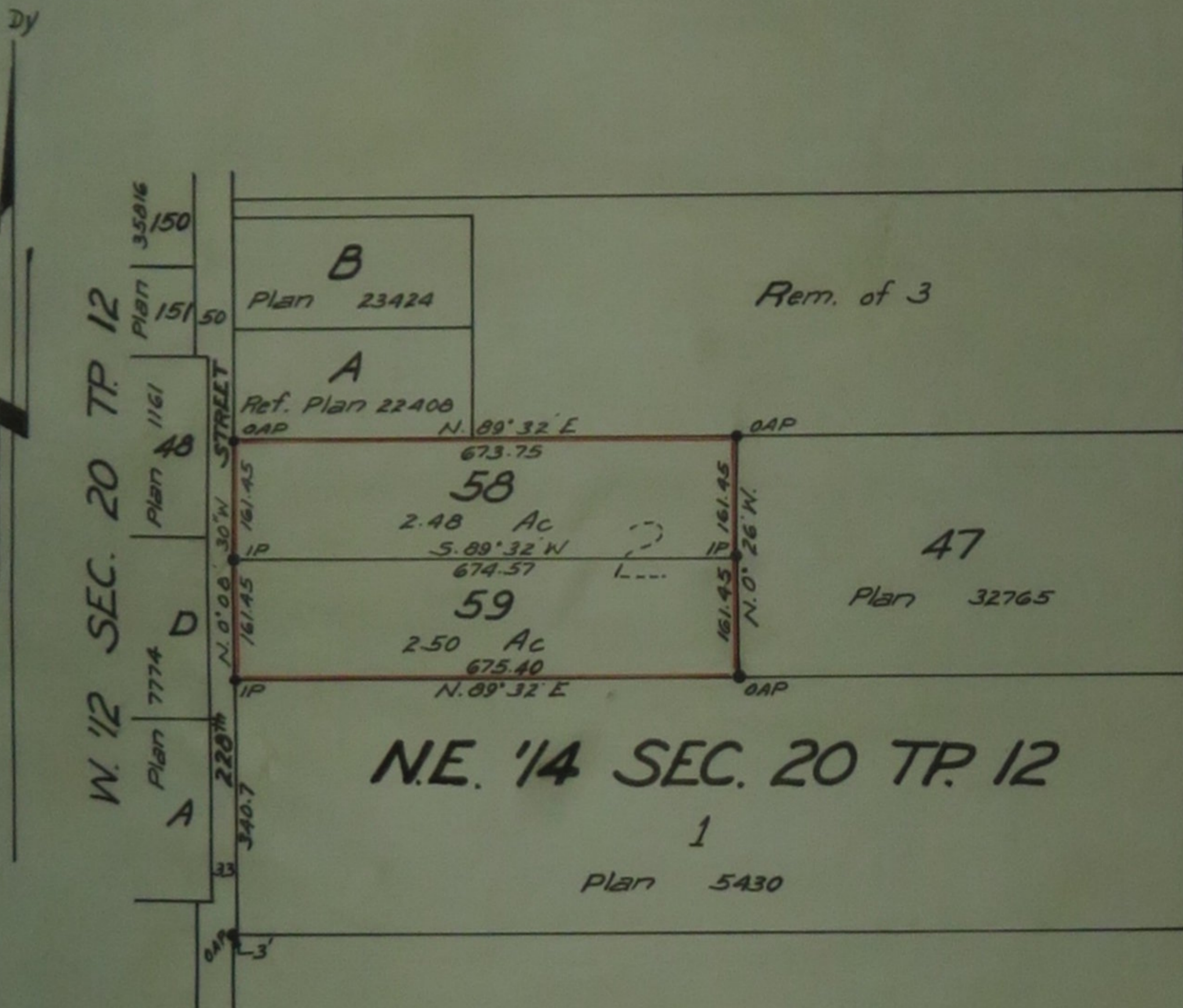
SUBDIVISION PLAN OF PART OF  
 LOT 2 OF LOT 1 OF THE N.E. '14 OF  
 SEC. 20 TP. 12 PLAN 5430 N.W.D.

Ref. 627673E

Scale : 1 inch = 200 feet

Deposited in the Land Registry Office  
 at New Westminster B.C.  
 this 26<sup>th</sup> day of August 1971.

*D.P. Bellwood*  
 Registrar



Owner *J. Russell*  
 Witness *Dean D. G...*  
 Owner *A. Powell*  
 Witness *Dean D. G...*

Legend

- OAP - Old Aluminum past found
- IP - Iron past set

Bearings are astronomic and derived from Plan 32765

J.M.C. Wade and Associates  
 B.C. Land surveyors  
 Mission & Maple Ridge B.C.

Approved under the Land Registry Act  
 this 24<sup>th</sup> day of August 1971

*J.D. Johnson*  
 Approving Officer Engineer  
 Maple Ridge Municipality

This plan lies within the Dewdney  
 Alouette Regional District

I J.M.C. Wade of Maple Ridge B.C., a British Columbia  
 Land surveyor, make oath and say that I was  
 present at and did personally superintend the  
 survey represented by this plan and that the  
 survey and plan are correct. The said survey  
 was completed on the 9<sup>th</sup> day of August  
 1971

*J.M. Wade*  
 B. C. L. S.

Sworn before me }  
 this 23<sup>rd</sup> day of }  
 August 1971 }  
 A Notary Public in and for the  
 Province of British Columbia