

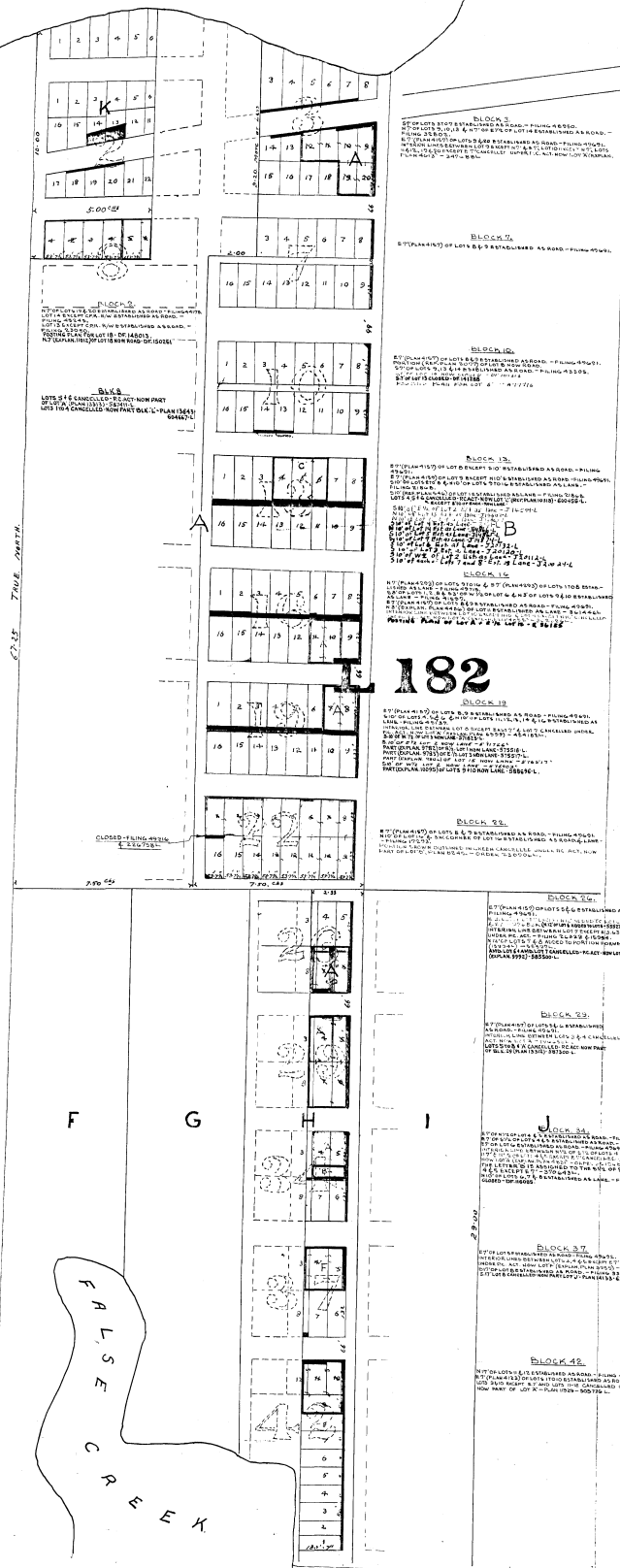
PLAN OF

This Plan is correct and is prepared under the provisions of the Land Registry Amendment Act 1873
Victoria B.C. Woodroffe Turner Land Surveyors
December 4th 1884

SUBDIVISION K AND PART OF
SUBDIVISION A
AND H
LOT 182 GROUP I.
NEW WESTMINSTER DISTRICT
Scale 2 Chains to 1 in.

Approved as regards
the eastern portion of ml
divisions A & H
"L J support"
Victoria Dec 19th
Deposited in the Land Registry Office
New Westminster, this 19th day of December
1884
R.W. Armstrong
By Register

B U R R A A D



182

183
7
0
7

264A