

WELLES

Duplicate Bundle N° 5.

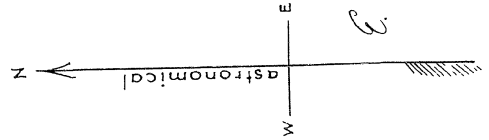
773.

Duplicate 773

PLAN OF SUBDIVISION OF
 LOT 32 BLOCK 103 DIST LOT 196
 NEW WESTMINSTER DIST.
 Scale 60 FT = One Inch

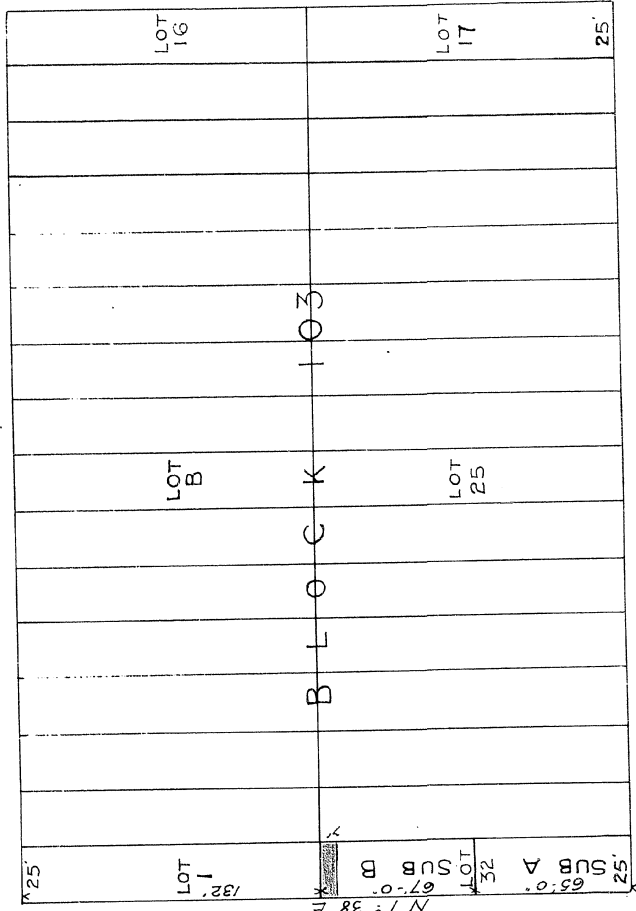
*Map No 743
 deposited the 26th
 day of January 1899
 Do. Town of
 Buxley
 in*

*J. Henry B. Warren, a Surveyor
 authorized to make surveys of
 Provincial lands, certify that
 this plan is a correct and true
 representation of the survey which has
 been made by me upon the
 ground and is deposited under
 the provisions of the Land
 Registry Act.*
 J. Henry B. Warren
 S.S.
 Jan. 24th 1899.



E. C. Muleson

BARNARD STREET



DUNLEVY AVENUE

JACKSON AVENUE

PRIOR STREET

*Note
 portion of E. C. Muleson's
 plan for*