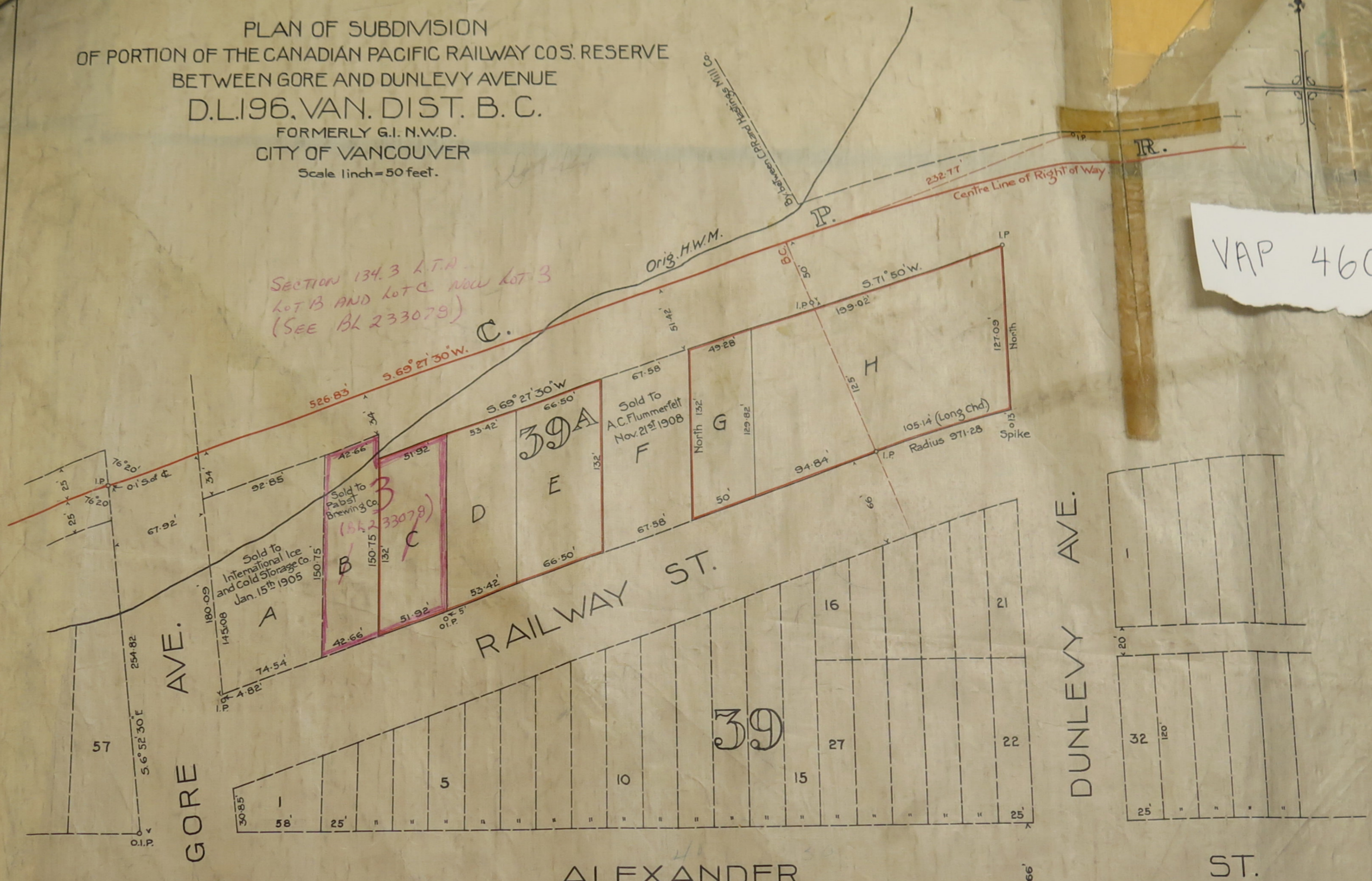


4600

PLAN OF SUBDIVISION
 OF PORTION OF THE CANADIAN PACIFIC RAILWAY CO'S. RESERVE
 BETWEEN GORE AND DUNLEVY AVENUE
 D.L.196, VAN. DIST. B. C.
 FORMERLY G.I. N.W.D.
 CITY OF VANCOUVER
 Scale 1 inch = 50 feet.

SECTION 134.3 L.T.A.
 LOT B AND LOT C NOW LOT 3
 (SEE BL 233079)



VAP 4600

I, F. T. Piery Cond, of the City of Vancouver, B.C. Land Surveyor, make oath and say that I was present at, and did personally superintend the Survey represented by this plan, and that the Survey and plan are correct.
 The said Survey was completed on the 20th day of September, 1912.

F. T. Piery Cond

Sworn before me this 18th day of October 1913.

W. J. McMillen

I hereby certify that all Taxes assessed against this property have been paid to see 31st 1913

Collector John Johnstone City Treas.

Dated Dec 24th 1913.

Deposited by E. W. Baleman on the 3rd Jan 1914

William Smith
 District Registrar of Titles
 Vancouver

For the Canadian Pacific Railway.

W. J. McMillen

Witness John Baleman

For the City of Vancouver.

W. J. McMillen
 Supervising City Engineer

30th Dec. 1913.

4600