

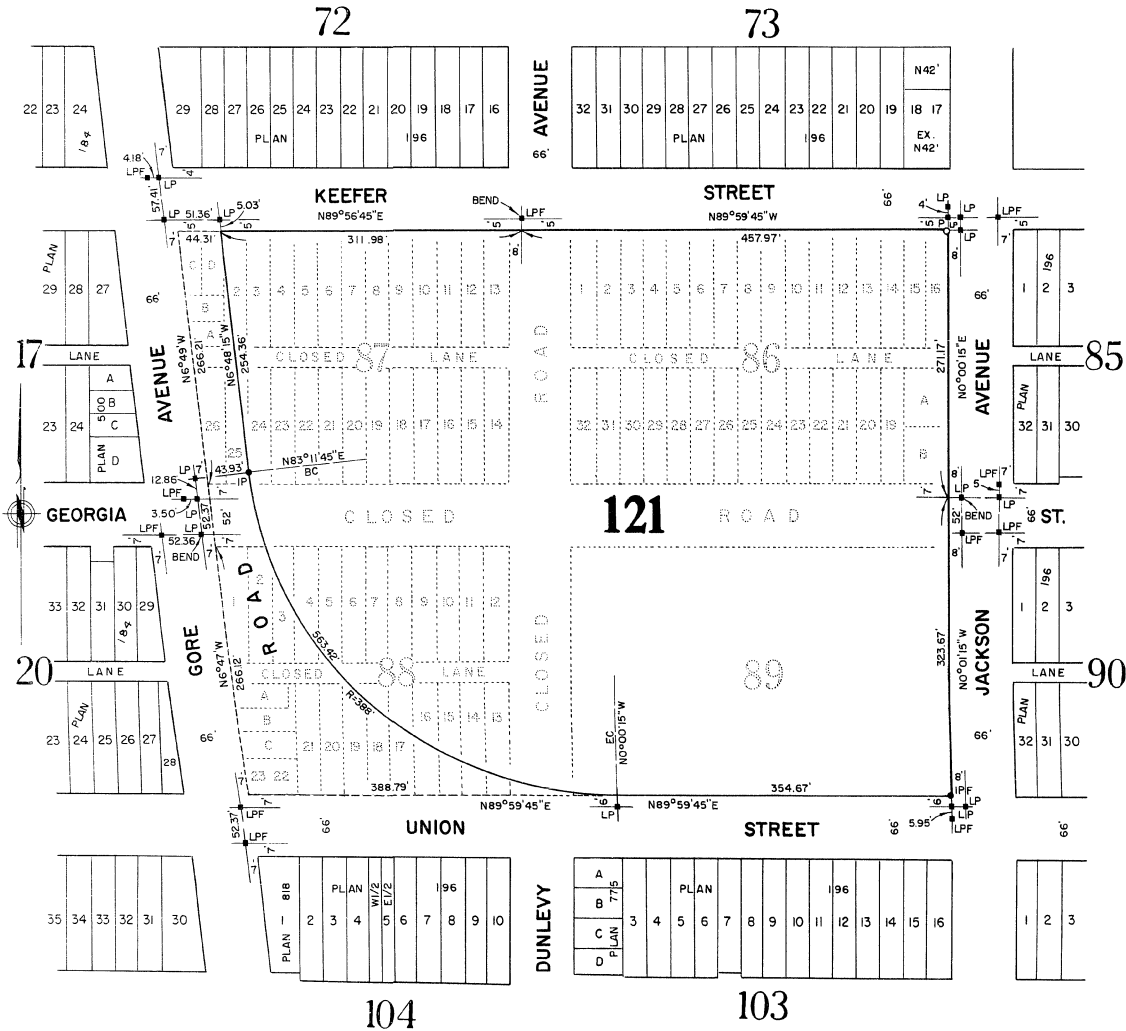
# PLAN 13098

PLAN OF SUBDIVISION OF PARCEL A (SEE 406117-L) AND PARCEL B (SEE 450996-L), AND LOTS 1 TO 16 AND 19 TO 32 (PLAN 196), BLOCK 86; LOTS 2 TO 26 (PLAN 196), AND LOTS A TO D OF LOT 1 (PLAN 1107), BLOCK 87; LOTS 1 TO 21 (PLAN 196), LOTS A TO C OF LOTS 22 AND 23 (PLAN 838), AND LOTS 22 AND 23 EXCEPT THAT PART OF EACH LOT INCLUDED IN PLAN 838 (PLAN 196), BLOCK 88; AND BLOCK 89 (EXPLANATORY PLAN 6556); AND CLOSED ROADS AND LANES INCLUDED IN EXPLANATORY PLAN 9785 DISTRICT LOT 196, GROUP ONE, NEW WESTMINSTER DISTRICT.

DEPOSITED IN THE LAND REGISTRY OFFICE AT VANCOUVER, B.C.  
THIS 21<sup>ST</sup> DAY OF AUGUST 1968  
*A. Burhoe*  
REGISTRAR

SCALE: 1 INCH = 100 FEET

PLAN 196



I, ADAM BURHOE, OF THE CITY OF VANCOUVER, BRITISH COLUMBIA LAND SURVEYOR, MAKE OATH AND SAY THAT I WAS PRESENT AT AND DID PERSONALLY SUPERINTEND THE SURVEY REPRESENTED BY THIS PLAN, AND THAT THE SURVEY AND PLAN ARE CORRECT. THE SAID SURVEY WAS COMPLETED ON THE 20TH DAY OF FEB. 1967.  
SWORN BEFORE ME THIS 23<sup>RD</sup> DAY OF FEBRUARY 19 67.  
*A. Burhoe* B.C.L.S.  
A COMMISSIONER FOR TAKING AFFIDAVITS WITHIN THE PROVINCE OF BRITISH COLUMBIA

- LPF INDICATES LEAD PLUG FOUND
- IPF " IRON POST FOUND
- IP " IRON POST SET
- LP " LEAD PLUG SET
- W " WOOD POST SET

Central Mortgage and Housing Corporation  
REGISTERED OWNER: CITY OF VANCOUVER

BEARINGS ARE ASTROMOMIC, UNION ST ASSUMED N89°59'45"E  
APPROVED UNDER THE LAND REGISTRY ACT THIS 21<sup>ST</sup> DAY OF JUNE 19 68.  
*[Signature]* CITY CLERK  
*[Signature]* DEPUTY CITY CLERK

*Marianne Linnell* DEPUTY MAYOR  
*[Signature]* DEPUTY CITY CLERK

*[Signature]* 3rd President  
General Solicitor