

PLAN-14664

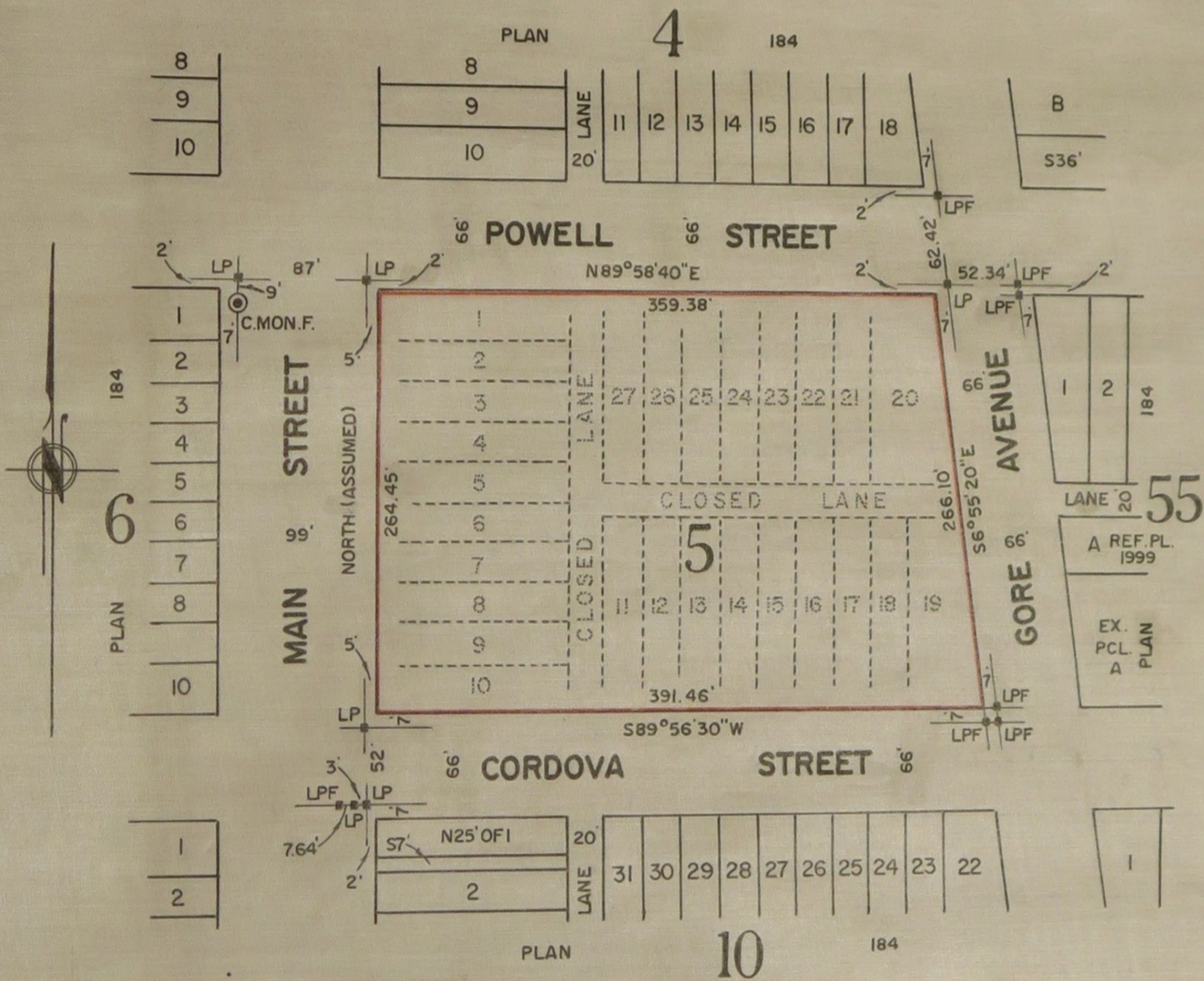
PLAN OF SUBDIVISION OF LOTS 1 TO 27,
PLAN 184, AND CLOSED LANES INCLUDED
IN EXPLANATORY PLAN 11415, BLOCK 5,
D.L.196, GP. ONE, N.W.D.

SCALE: 1 INCH = 100 FEET

DEPOSITED IN THE LAND REGISTRY OFFICE AT VANCOUVER, B.C.

THIS 26TH DAY OF OCTOBER 1972

[Signature]
DEPUTY REGISTRAR



REAPPROVED UNDER THE 'LAND REGISTRY ACT'
THIS 17TH DAY OF OCTOBER 1972

[Signature]
APPROVING OFFICER, CITY OF VANCOUVER,
DIRECTOR OF PLANNING.

I, ADAM BURHOE OF THE CITY OF VANCOUVER, BRITISH COLUMBIA LAND SURVEYOR,
MAKE OATH AND SAY THAT I WAS PRESENT AT AND DID PERSONALLY SUPERINTEND
THE SURVEY REPRESENTED BY THIS PLAN, AND THAT THE SURVEY AND PLAN ARE
CORRECT. THE SAID SURVEY WAS COMPLETED ON THE 26TH DAY OF NOV. 1971

SWORN BEFORE ME THIS 26TH
DAY OF NOVEMBER 1971

[Signature: G.R. Reader]
A COMMISSIONER FOR TAKING AFFIDAVITS
WITHIN THE PROVINCE OF BRITISH COLUMBIA

APPROVED UNDER THE 'LAND REGISTRY ACT'
THIS 17TH DAY OF JULY 1972
[Signature: W. P. ...]
APPROVING OFFICER, CITY OF VANCOUVER,
DIRECTOR OF PLANNING (DEPUTY)

- LPF - INDICATES LEAD PLUG FOUND
- C.MON.F. = CONCRETE MONUMENT FOUND
- LP - " " LEAD PLUG SET

REGISTERED OWNER: CITY OF VANCOUVER

[Signature]
MAYOR
[Signature]
CITY CLERK

BEARINGS ARE ASTRONOMIC, MAIN ST.
ASSUMED NORTH

THIS PLAN LIES WITHIN THE GREATER
VANCOUVER REGIONAL DISTRICT

LE 3751