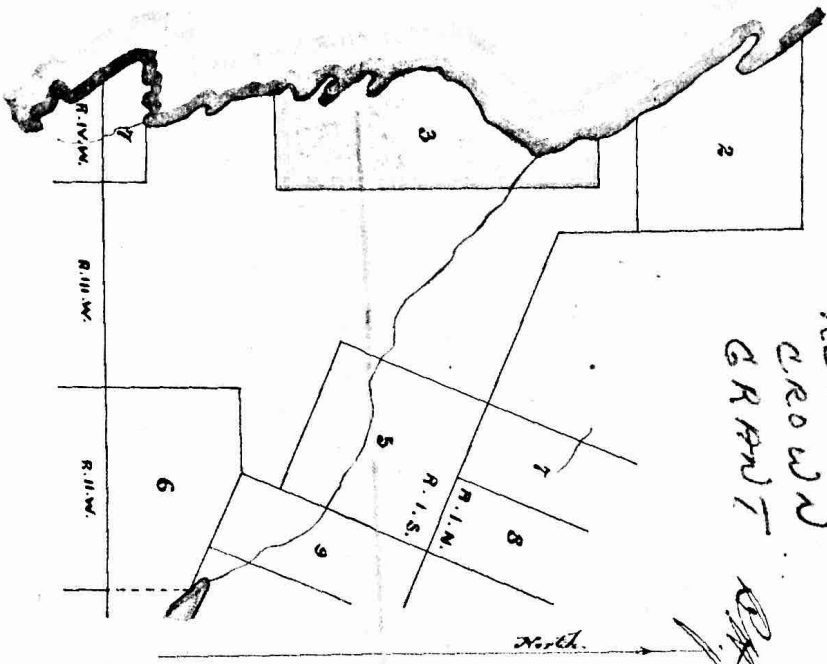


J. E. J.
Wellspring Standard

Carl S. Davis

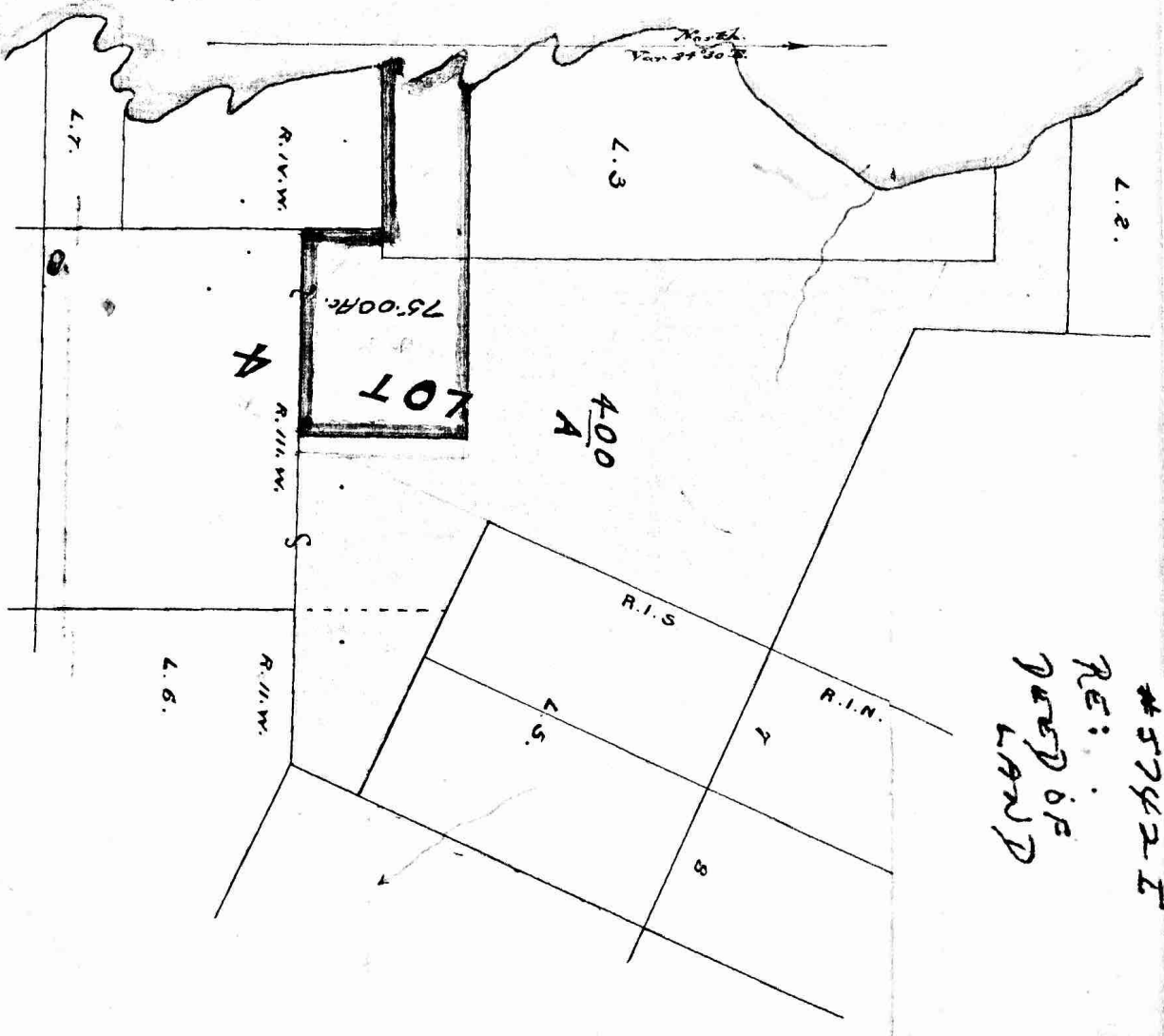
5742 I C.E. 219

RE:
CROWN
GRANT *OK*



Scale 40 Chains to 1 Inch.

5742 I
RE:
REDE
LAND



Scale 30 Chains to One Inch.

J. G. W.
Salt Spring Island (S.W.)

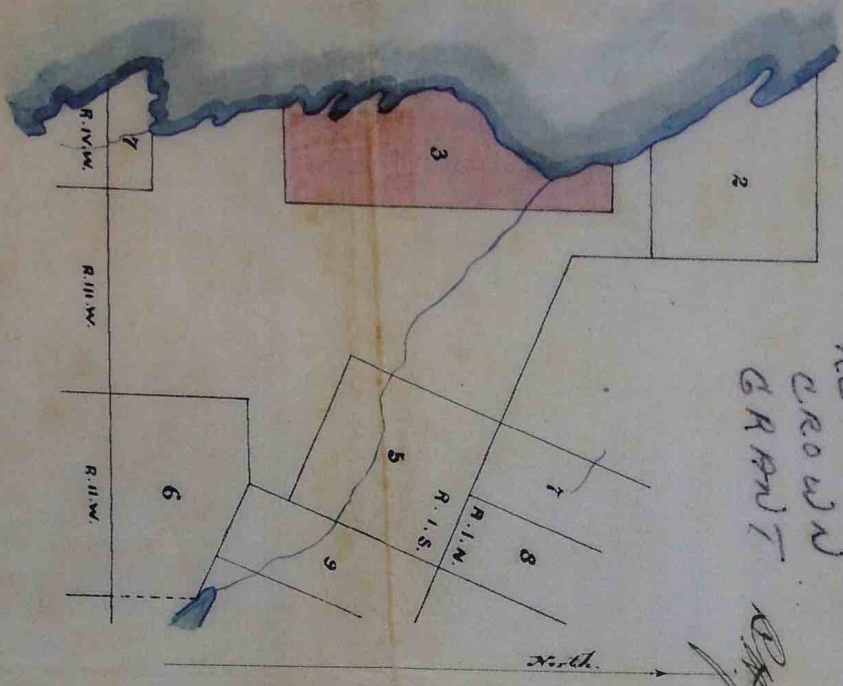
Carl M. Curtis

5742 I

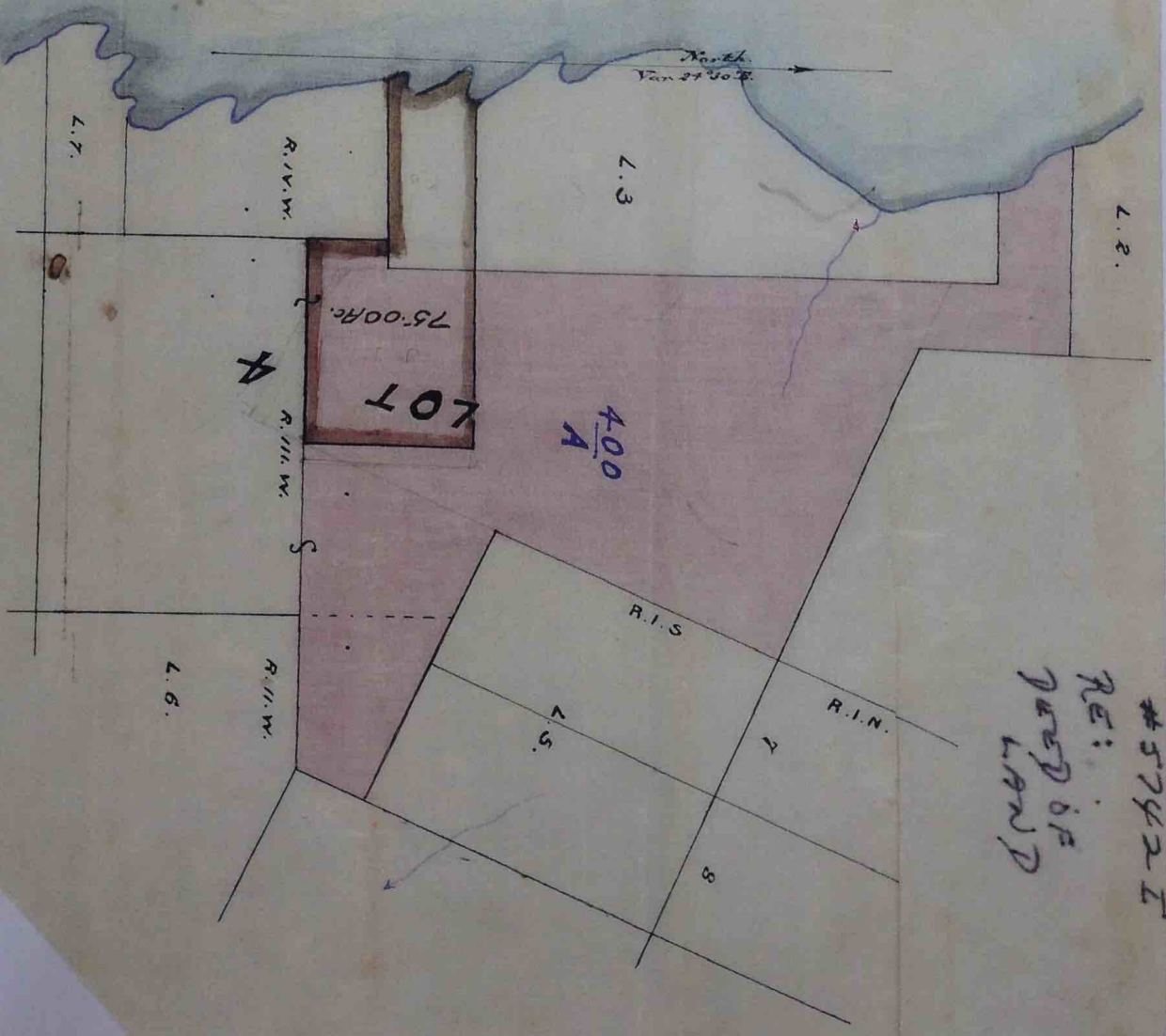
Cd 219

RE:
CROWN
GRANT

[Signature]



Scale 40 Chains to 1 Inch.



5742 I
RE:
NEED OF
LAND

Scale 20 Chains to One Inch.