

PLAN OF SUBDIVISION OF
PART OF LOT C, PLAN 2183,
SECTION 5, RANGE 2 EAST,
NORTH SALT SPRING ISLAND,
COWICHAN DISTRICT.

Scale - 1" = 60'

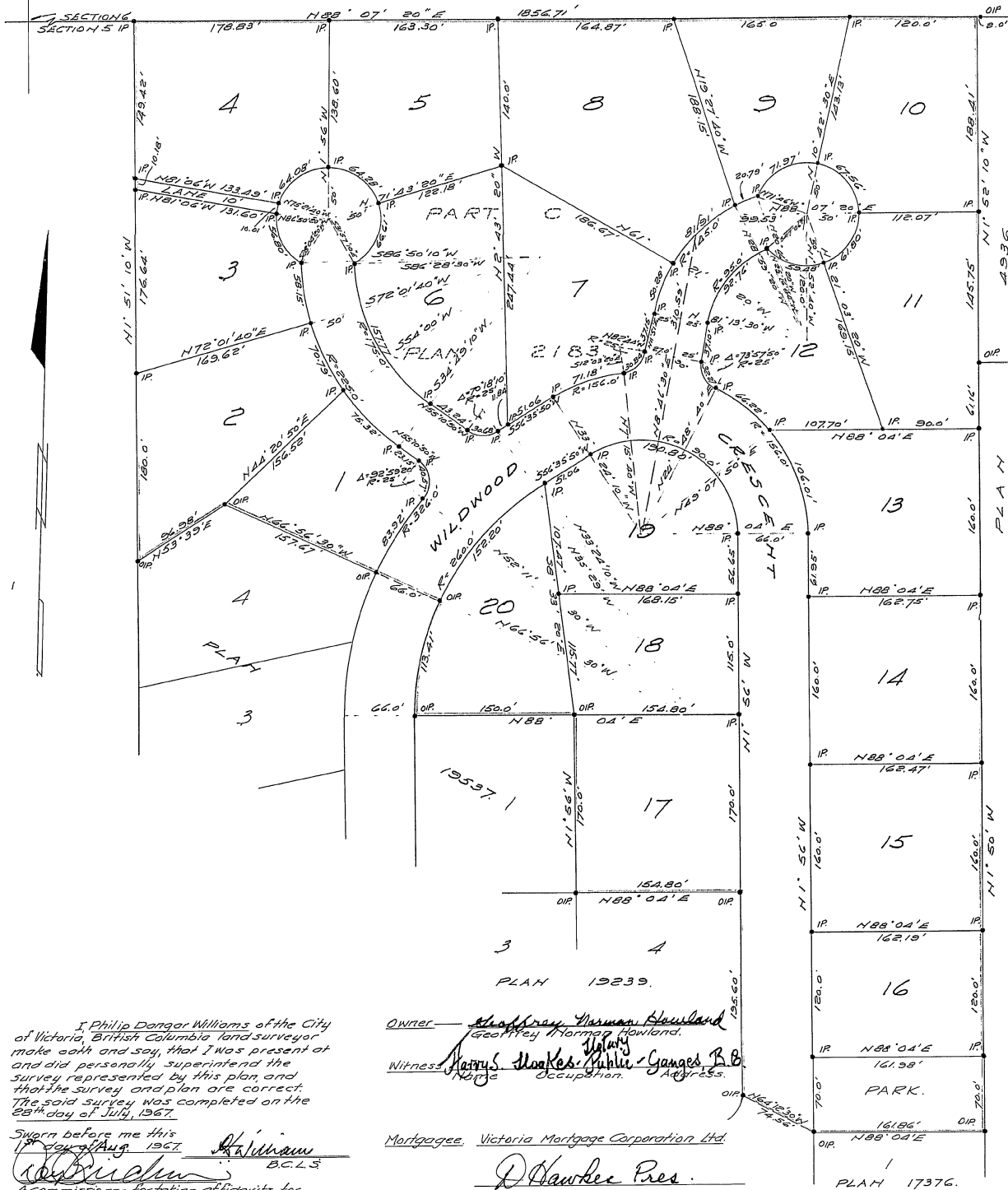
Deposited in the Land Registry
Office at Victoria, B.C.,
this 29th day of September, 1967

H. Kennedy
Registrar.

LEGEND

- IP Denotes iron post set.
- OIP Denotes iron post found.

Bearings are astronomic, derived from Plan 19537.



I, Philip Donger Williams of the City of Victoria, British Columbia, land surveyor, make oath and say that I was present at and did personally superintend the survey represented by this plan, and that the survey and plan are correct. The said survey was completed on the 28th day of July, 1967.

Sworn before me this 1st day of August 1967.
W. Richmond
Commissioner for taking of Affidavits for British Columbia.

Owner — *Shaffray Thomas Howland*
Geoffrey Thomas Howland
Witness — *Harry Stokes* Public Notary
James B. Ganges B.C. Attorney at Law

Mortgagee — *Victoria Mortgage Corporation Ltd.*
D. Hawkes Pres.

Approved under the Land Registry Act this 14th day of August 1967.

M. G. Elston
Approving Officer,
Dept. of Highways.

Butterfield, Hughes & Howie
B.C. Land Surveyors
Victoria & Park Alberni
File: 3352