

Nikkei National Museum & Cultural Centre
www.nikkeimuseum.org

Collection Tsutae and Hanako Sato fonds

Series Photographs

File

Accession Number 1996.170.16.1

Item Title Miyagawa and his boat; location unknown; 1949

Item Date 1949



Item Description

The item consists of a black and white photograph of a small fishing boat with a man on onboard in a harbour beside a larger ship. A caption in Japanese on the back of the image states that the image is of Miyagawa and his boat. It also states that he fishes for shrimp, prawns, or lobsters. The boat is 9.6 metres long.

Collection Tsutae and Hanako Sato fonds

Series Photographs

File

Accession Number 1996.170.16.2

Item Title Unidentified woman working in garden; location unknown; 1950

Item Date 1950



Item Description

The item consists of a black and white photograph of a women working in a garden beside a house. "1950" is written in English on the back with pencil.

Collection Tsutae and Hanako Sato fonds

Series Photographs

File

Accession Number 1996.170.16.3

Item Title Welcoming party for Tsutae and Hanako Sato by Gakuyu-kai; Tashme, B.C.; 1944

Item Date 1944



Item Description

The item consists of a black and white group photograph of the welcoming party for Tsutae and Hanako Sato by Gakuyu-kai in the internment camp Tashme, B.C. The photograph depicts three rows of people sitting in front of a building with a baseball game notice board. In the background is a mountain range. The Satos are seated in the first row in the foreground, ninth and tenth from the right. A caption on the back of the image in Japanese includes the date "1944" and indicates that it is a welcoming party for the Satos by Gakuyu-kai in Tashme.

Collection Tsutae and Hanako Sato fonds

Series Photographs

File

Accession Number 1996.170.16.4

Item Title Slokan public school opening ceremony; Slokan, B.C.; 1942

Item Date 1942



Item Description

The item consists of a black and white photograph of children standing on a field in groups. Each group is accompanied by an adult, mostly women. A man is making a speech on a platform in front of the children and adults. People appear to be playing and watching a sports game in the middle ground and the base of a forested mountain appears in the background. A caption in Japanese on the right margin of the photograph approximately translates to: "Slokan public school opening ceremony; April, this year". More Japanese writing appears on the back of the photograph.

Collection Tsutae and Hanako Sato fonds

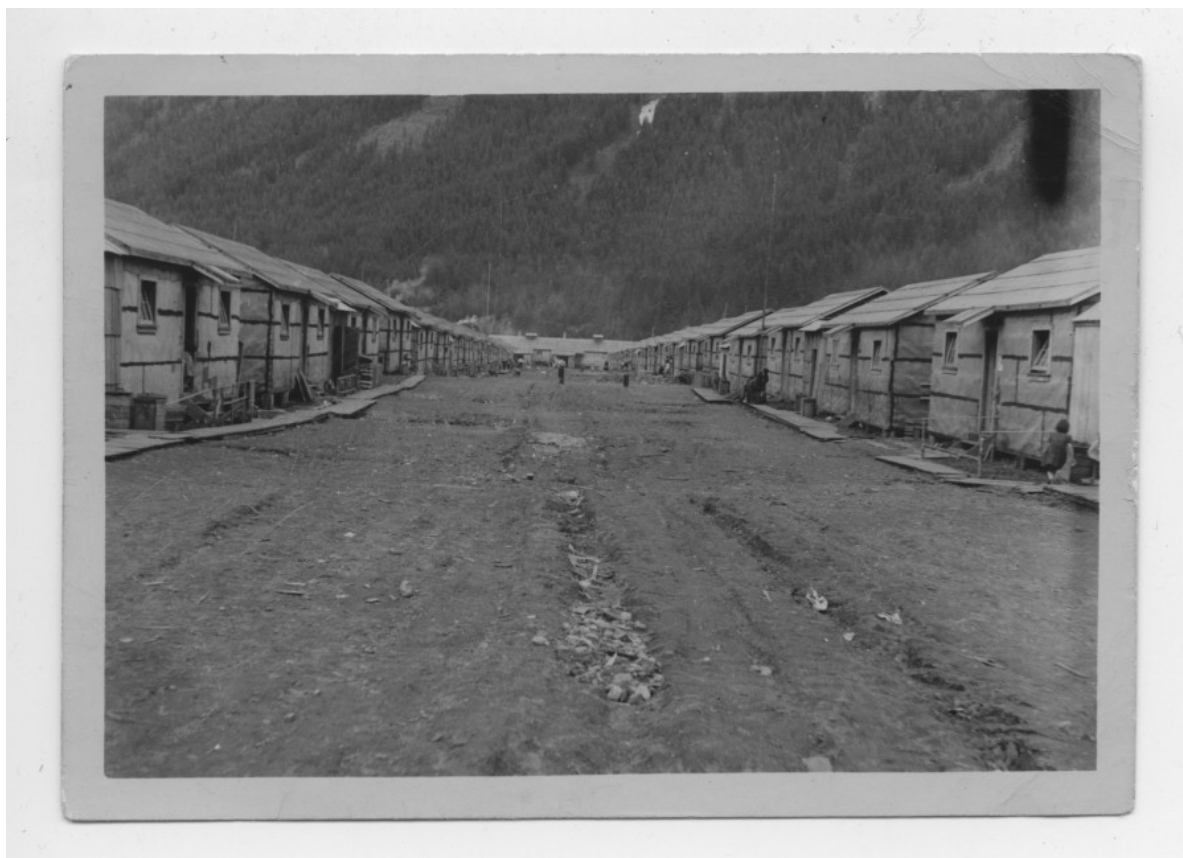
Series Photographs

File

Accession Number 1996.170.16.5

Item Title Rows of buildings and road at Tashme, B.C.; 1942

Item Date 1942



Item Description

The item consists of a black and white photograph of two long rows of buildings with a dirt road in between them. There are some people standing and walking in front of the buildings and on the road. A forested mountain is in the background. A caption in Japanese on the back of the image approximately translates to: "the barracks in Tashme, one of the Japanese settlements set up by Canadian government". The caption also indicates that the date is 1942.

Collection Tsutae and Hanako Sato fonds

Series Photographs

File

Accession Number 1996.170.16.6

Item Title Picnic held by Vancouver Japanese Language School Mothers and Sisters Association for Tsutae and Hanako Sato; Tashme, B.C.; 1944

Item Date 1944



Item Description

The item consists of a black and white group portrait of men, women, and children posing on grass in front of some buildings in the internment camp Tashme, B.C. A mountain is visible in the background. A caption on the front of the image approximately translates to: "Mr. and Mrs. Sato's welcome picnic at Tashme, By Vancouver Japanese Language School Mothers and Sisters Association". Tsutae and Hanako Sato are seated in the second row, seventh and eighth from the left. There is Japanese writing on the reverse of the photograph, including the date 1944.

Collection Tsutae and Hanako Sato fonds

Series Photographs

File

Accession Number 1996.170.16.7.1

Item Title Aerial view of Tashme, B.C.

Item Date 1942



Item Description

The item consists of a black and white photograph of an aerial view of the internment camp Tashme, B.C. Buildings are visible in rows surrounded by a river to the right and forested mountains above and below. There is Japanese writing on the reverse of the photograph.

Nikkei National Museum & Cultural Centre
www.nikkeimuseum.org

Collection Tsutae and Hanako Sato fonds

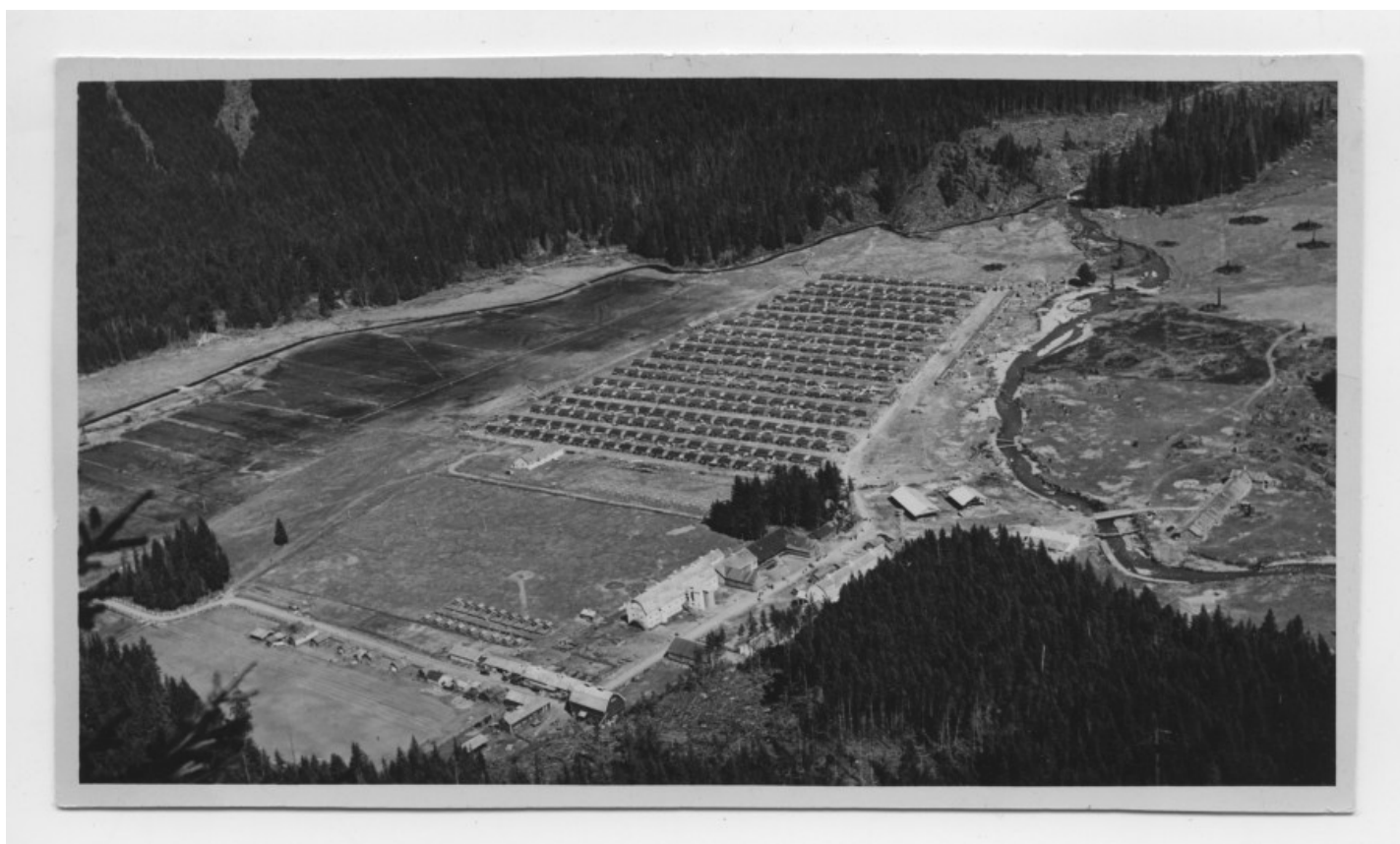
Series Photographs

File

Accession Number 1996.170.16.7.2

Item Title Aerial view of Tashme, B.C.

Item Date 1942



Item Description

The item consists of a black and white photograph of an aerial view of the internment camp Tashme, B.C. Buildings are visible in rows surrounded by a river to the right and forested mountains above and below. A caption in Japanese on the reverse of the photograph approximately translates to: "Japanese settlement set up by Canadian Government, Tashme".

Collection Tsutae and Hanako Sato fonds

Series Photographs

File

Accession Number 1996.170.16.8

Item Title Buildings in winter in Tashme, B.C.

Item Date 1942



Item Description

The item consists of a black and white photograph of the internment camp Tashme, B.C. covered in snow. In the foreground are what appear to be large public and maintenance buildings and private residences in the middle-ground. The base of forested mountains are visible in the background. A caption in Japanese on the back of the image approximately translates to: "Tashme, Japanese settlement set up by Canadian government".

Collection Tsutae and Hanako Sato fonds

Series Photographs

File

Accession Number 1996.170.16.9

Item Title Slocan City from Mickey's Bluff; Slocan, B.C.; 1943

Item Date 1943



Item Description

The file consists of a black and white photograph of a woman in a short-sleeved shirt and a skirt sitting on a bluff overlooking the town of Slocan, B.C. The photograph captures the back of the woman's head and the left side of her body. The part of the town visible in the photograph is made up of some clusters of buildings dispersed among trees and streets. A river and the base of a forested mountain appear in the background. A caption in English on front of the image reads: "Slocan City from Mickey's Bluff". A caption in Japanese on the back of the image approximately translates to: "Japanese settlement in Slocan set-up by Canadian Government" and "This picture was presented by Shinkuro K. to Mr. Sato." The photograph is dated October 1943 in Japanese.

Collection Tsutae and Hanako Sato fonds

Series Photographs

File

Accession Number 1996.170.16.10.1

Item Title New Denver Buddhist Sunday school; New Denver, B.C.; 1944

Item Date 1944



Item Description

The item consists of a black and white photograph of a large group of adults and children sitting and standing in front of some buildings and trees with mountains in the background. The people in the photograph are mostly children. They are positioned in the centre of the group with the adults standing surrounding them. A caption in English on the front of the image states: "New Denver Buddhist Sunday School, New Denver, B.C. April 8th, 1944". A caption in Japanese on the back of the image approximately translates to: "New Denver Buddhist Sunday School, Japanese settlement in New Denver".

Collection Tsutae and Hanako Sato fonds

Series Photographs

File

Accession Number 1996.170.16.10.2

Item Title New Denver Buddhist Sunday school; New Denver, B.C.; 1944

Item Date 1944



Item Description

The item consists of a black and white copy negative of a large group of adults and children sitting and standing in front of some buildings and trees with mountains in the background. The people in the negative are mostly children. They are positioned in the centre of the group with the adults standing surrounding them. A caption in English on the front of the image states: "New Denver Buddhist Sunday School, New Denver, B.C. April 8th, 1944".

Nikkei National Museum & Cultural Centre
www.nikkeimuseum.org

Collection Tsutae and Hanako Sato fonds

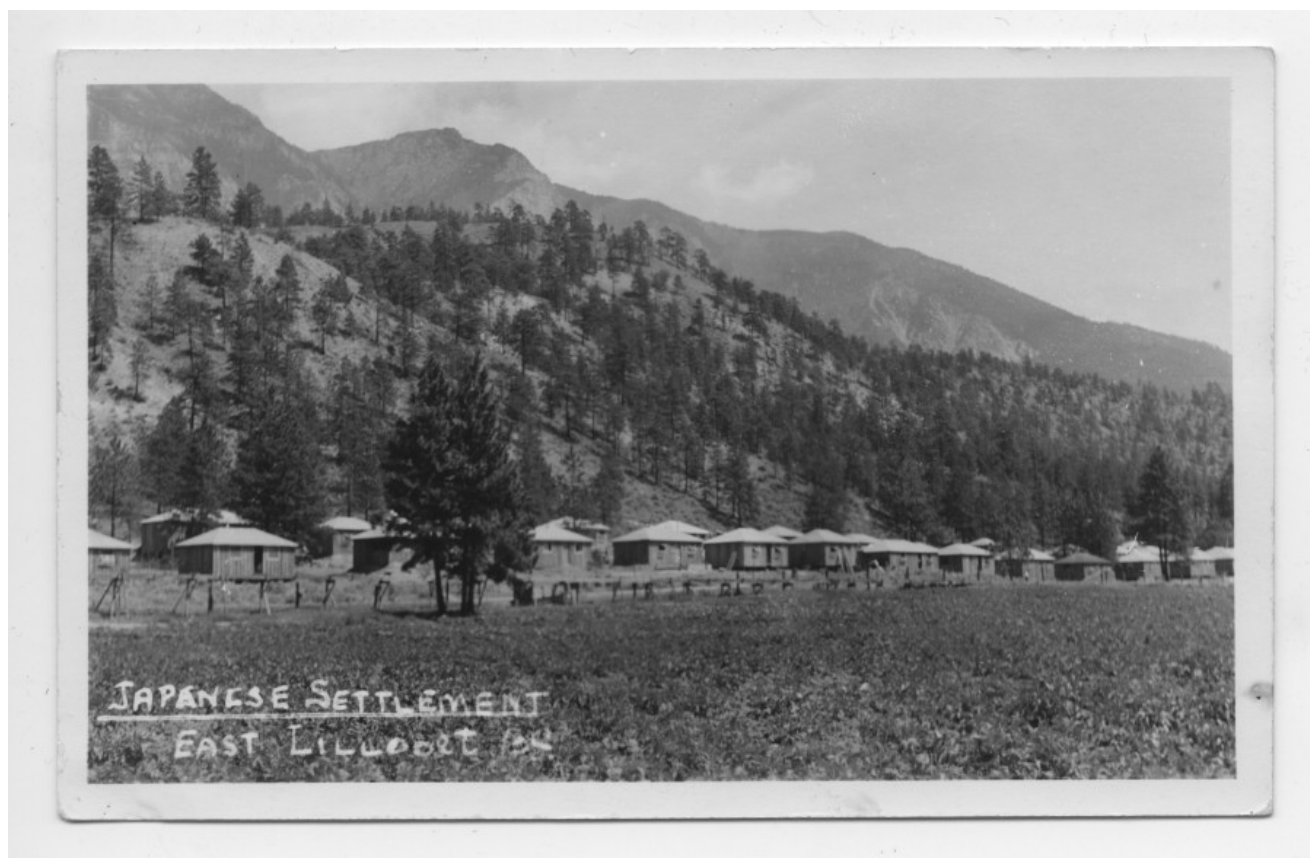
Series Photographs

File

Accession Number 1996.170.16.11.1

Item Title Japanese Settlement: East Lillooet, B.C.

Item Date 1942



Item Description

The item consists of a black and white photograph of East Lillooet, B.C., used as a postcard. There is a field in the foreground, many buildings and a fence dividing the field from the buildings in the middle ground, and forested mountains in the background. A caption in English on the front of the photograph reads, "JAPANESE SETTLEMENT EAST LILLOOET, B.C." On the back of the image there is a caption in Japanese that approximately translates to: "Japanese settlement (free) in East Lillooet".

Collection Tsutae and Hanako Sato fonds

Series Photographs

File

Accession Number 1996.170.16.11.2

Item Title Japanese Settlement: East Lillooet, B.C.

Item Date 1942



Item Description

The item consists of a black and white photograph of East Lillooet, B.C., used as a postcard. There is a field in the foreground, many buildings and a fence dividing the field from the buildings in the middle ground, and forested mountains in the background. A caption in English on the front of the photograph reads, "JAPANESE SETTLEMENT EAST LILLOOET, B.C." On the back of the image there is a caption in Japanese that approximately translates to: "Japanese settlement (free) in East Lillooet".

Collection Tsutae and Hanako Sato fonds

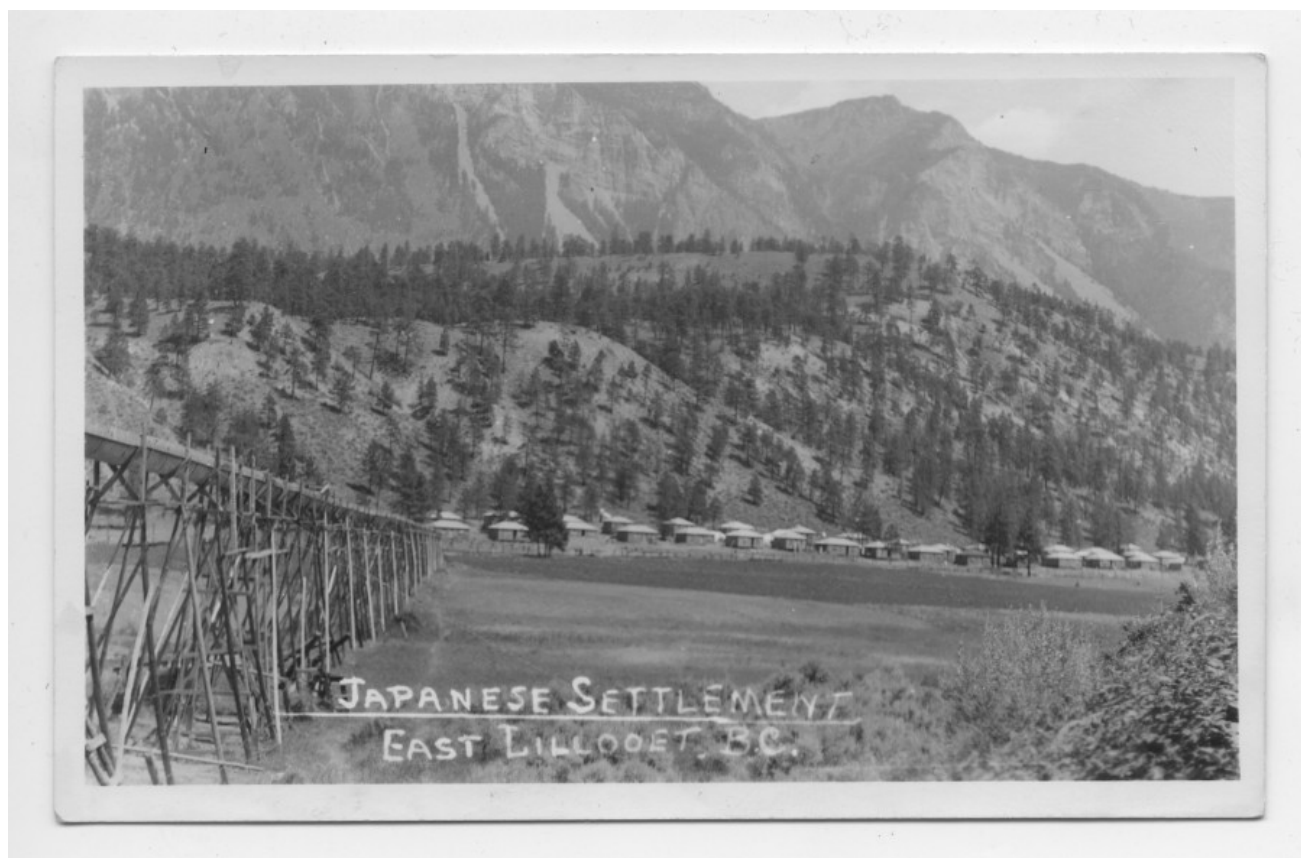
Series Photographs

File

Accession Number 1996.170.16.11.3

Item Title Japanese Settlement: East Lillooet, B.C.

Item Date 1942



Item Description

The item consists of a black and white photograph of East Lillooet, B.C., used as a postcard. There is a field in the foreground and a raised structure with piping leading to rows of buildings in the middle ground. There are forested mountains in the background. A caption in English on the front of the photograph reads, "JAPANESE SETTLEMENT EAST LILLOOET, B.C." On the back of the image there is a caption in Japanese that approximately translates to: "Japanese settlement (free) in East Lillooet".

Nikkei National Museum & Cultural Centre
www.nikkeimuseum.org

Collection Tsutae and Hanako Sato fonds

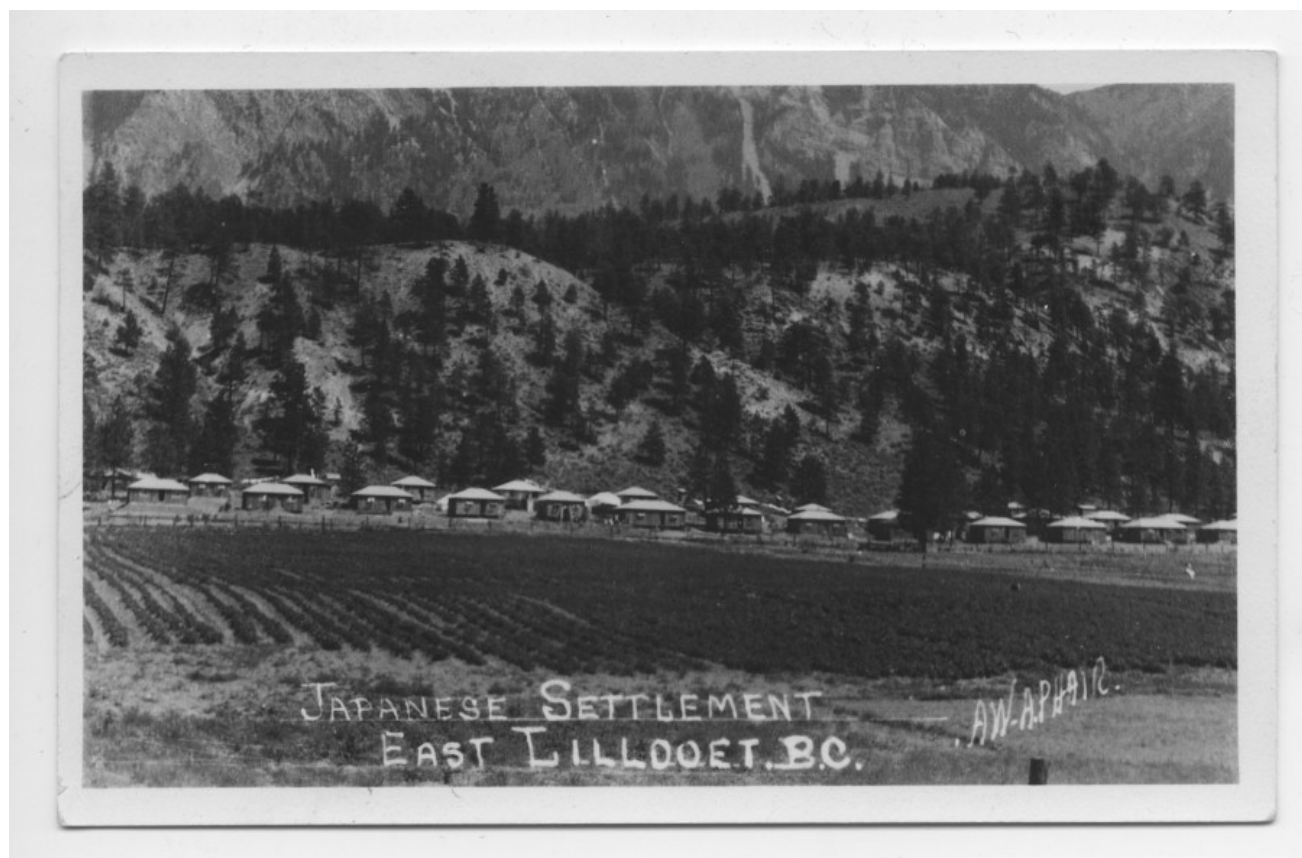
Series Photographs

File

Accession Number 1996.170.16.11.4

Item Title Japanese Settlement: East Lillooet, B.C.

Item Date 1942



Item Description

The item consists of a black and white photograph of East Lillooet, B.C., used as a postcard. There is a field in the foreground with rows of crops. In the middle ground there are rows of buildings and there are forested mountains in the background. A caption in English on the front of the photograph reads, "JAPANESE SETTLEMENT EAST LILLOOET, B.C. AW.A.PHAIR" On the back of the image there is a caption in Japanese that approximately translates to: "Japanese settlement (free) in East Lillooet".

Collection Tsutae and Hanako Sato fonds

Series Photographs

File

Accession Number 1996.170.16.12

Item Title First group of graduates at Vancouver Japanese Language School; Vancouver, B.C.; 1953

Item Date 1953



Item Description

The item consists of a black and white photograph of Tsutae Sato, Hanako Sato, children, and teenagers or young adults sitting and standing in front of the Japanese Hall of the Vancouver Japanese Language School in Vancouver, B.C. A tiled sign on the building reads, "1928 JAPANESE HALL". The Satos appear in the middle of the first row. A piece of paper with a caption in Japanese is attached to the image. The caption approximately translates to: "The picture of students, Mr. and Mrs. Sato (1953, May)".

Collection Tsutae and Hanako Sato fonds

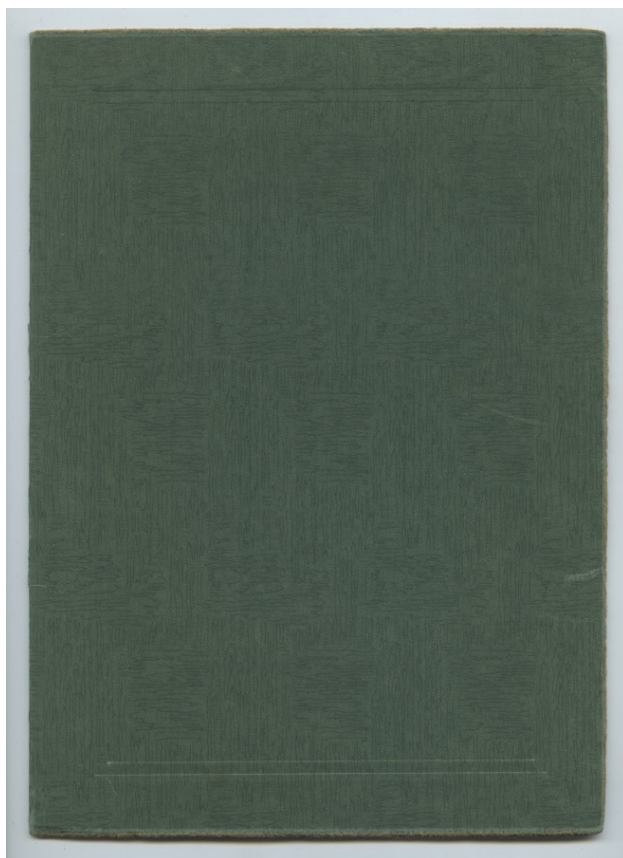
Series Photographs

File

Accession Number 1996.170.16.13

Item Title Dale Yutaka Banno; Kamloops, B.C.; 1953

Item Date 1953



Item Description

The item consists of a black and white professionally taken portrait of a baby on a blanket playing with their shoelaces. The photograph is enclosed in a green paper frame with a cover. On the inside of the front cover of the image it states in English: "To Mr. and Mrs. T. Sato" and "Dale Yutaka Banno April 27, 1953". An imprint on the bottom of the frame states, "Photomart Kamloops, BC".

Collection Tsutae and Hanako Sato fonds

Series Photographs

File

Accession Number 1996.170.16.14

Item Title Tsutae Sato, Vancouver , B.C.

Item Date 1970



Item Description

The item consists of a black and white professionally taken portrait of an older Tsutae Sato mounted on a beige protective folding board with a glossy transparent layer on top. He is wearing glasses, a suit and tie, a flower lapel pin, and a pocket square.

Nikkei National Museum & Cultural Centre
www.nikkeimuseum.org

Collection Tsutae and Hanako Sato fonds

Series Photographs

File

Accession Number 1996.170.16.15.1

Item Title Popoff, Slokan, B.C.

Item Date 1942



Item Description

The item consists of a black and white photograph of Popoff, Slokan, B.C., used as a postcard. In the foreground are a few people on a dirt road and dispersed buildings. In the background are forested mountains. A caption in English on the bottom of the front of the photograph reads, "Popoff Slokan -". A caption in Japanese on the back of the image approximately translates to: "Japanese settlement in Slokan" and "Popoff".

Nikkei National Museum & Cultural Centre
www.nikkeimuseum.org

Collection Tsutae and Hanako Sato fonds

Series Photographs

File

Accession Number 1996.170.16.15.2

Item Title Bay Farm, Slocan, B.C.

Item Date 1942



Item Description

The item consists of a black and white photograph of Bay Farm, Slocan, B.C., used as a postcard. In the foreground there is a dirt road. On the side of the road closest to the camera there are only a few dispersed buildings while on the other side there are many tightly packed buildings. There is a person crossing the road. In the background there are forested mountains. A caption in English on the bottom of the front of the photograph reads, "Bay Farm Slocan". There is a caption in Japanese on the back of the image including the words "Bay Farm".

Nikkei National Museum & Cultural Centre
www.nikkeimuseum.org

Collection Tsutae and Hanako Sato fonds

Series Photographs

File

Accession Number 1996.170.16.15.3

Item Title Bay Farm Project, Slocan, B.C.

Item Date 1942



Item Description

The item consists of a black and white photograph of Bay Farm, Slocan, B.C., covered in snow. The photograph is used as a postcard. In the foreground there is a crossroads. The part of Bay Farm closest to the camera has some buildings while the farther away part of Bay Farm has many tightly packed buildings. In the background there are forested mountains. There is a lot of fog or smoke in the air. A caption in English on the bottom of the front of the photograph reads, "Bay Farm Project - Slocan". There is a caption in Japanese on the back of the image including the words "Bay Farm".

Collection Tsutae and Hanako Sato fonds

Series Photographs

File

Accession Number 1996.170.16.15.4

Item Title Slocan City; Slocan, B.C.

Item Date 1942



Item Description

The item consists of a black and white photograph of Slocan City, B.C., used as a postcard. In the foreground there is a dirt road with a person riding a bicycle. On either side of the road there are buildings, electricity poles, and cars. In the background there are forested mountains. A caption in English on the bottom of the front of the photograph reads, "Slocan City, B.C." There is a caption in Japanese on the back of the image including the words "Slocan City".

Collection Tsutae and Hanako Sato fonds

Series Photographs

File

Accession Number 1996.170.16.16

Item Title Kazuko; location unknown; 1956

Item Date 1956



Item Description

The item consists of a black and white portrait of a sitting girl in a kimono posing with her hands folded in her lap. Her kimono has a floral pattern and her hair is cut into a bob hairstyle with a bow accessory. She is sitting in front of a wood window frame covered with a striped fabric. A caption in Japanese approximately translates to: "April 1955, Kazuko 8 years old".

Collection Tsutae and Hanako Sato fonds

Series Photographs

File

Accession Number 1996.170.16.17.1

Item Title Hi-fi presented to Hanako and Tsutae Sato by Gakuyu-kai; location unknown; 1958

Item Date 1958



Item Description

The item consists of a black and white photograph of Hanako and Tsutae Sato receiving and posing in front of a hi-fi presented to them by the Gakuyu-kai. They are standing on either side of the hi-fi with one hand on in. There is a potted flower on top of the hi-fi. The photograph was taken in a room with artwork on the walls and a fireplace. A caption in Japanese on the back of the photograph and printed text in English on the side of the photograph's front indicate that the date is February 1958.

Collection Tsutae and Hanako Sato fonds

Series Photographs

File

Accession Number 1996.170.16.17.2

Item Title Hi-fi presented to Hanako and Tsutae Sato by Gakuyu-kai; location unknown; 1958

Item Date 1958



Item Description

The item consists of a black and white photograph of Hanako and Tsutae Sato receiving and posing in front of a hi-fi presented to them by the Gakuyu-kai. They are standing on either side of the hi-fi with one hand on it. There is a potted flower on top of the hi-fi. The photograph was taken in a room with artwork on the walls and a fireplace. A caption in Japanese on the back of the photograph and printed text in English on the side of the front of the photograph indicate that the date is February 1958.

Collection Tsutae and Hanako Sato fonds

Series Photographs

File

Accession Number 1996.170.16.18

Item Title Hokutokai 50th Anniversary Party in Toronto, Ontario; 1979

Item Date 1979



Item Description

The item consists of a black and white photograph of a group of senior men and women sitting in two rows under a sign that reads "Welcome to HOKUTOKAI 50th Anniversary". They are all wearing ribbon pins. Tsutae and Hanako Sato are seated in the centre of the front row. A caption in Japanese on a piece of paper which is attached to the image approximately translates to: "1929 graduates of Vancouver Japanese School" and indicates that the photograph was taken in Toronto, Ontario, on April 14, 1979.

Collection Tsutae and Hanako Sato fonds

Series Photographs

File

Accession Number 1996.170.16.19

Item Title Visit by Japanese imperial family to Vancouver Japanese Language School; Vancouver, B. C.; 1965

Item Date 1965



Item Description

The item consists of a black and white photograph of a group of nine adult men and women sitting around a table in the Vancouver Japanese Language School. Tsutae Sato is standing at the head of the table. Most of the people are dressed in suits and skirt-suits with one woman wearing a fur shawl. The table is covered with a cloth and has a flower arrangement as a centrepiece. Bookcases and windows are visible in the background. A caption in Japanese on a piece of paper attached to the bottom of the image approximately translates to: "Mr. Sato explained about the school and condition of school to Mikasanomiya". The date on the paper is October 3, 1965.

Collection Tsutae and Hanako Sato fonds

Series Photographs

File

Accession Number 1996.170.16.20

Item Title Hiroko and Masahiro; location unknown; 1975

Item Date 1975



Item Description

The file consists of a colour photograph of a boy and girl sitting on a wood porch. The girl is wearing a short-sleeve pink dress and the boy is wearing blue shorts and a blue, white, and red sleeveless shirt. There is an untranslated caption on the back of the image, which appears to be a family tree. The back of the photograph is date stamped December 1975 in English.

Collection Tsutae and Hanako Sato fonds

Series Photographs

File

Accession Number 1996.170.16.21

Item Title Hanako and Tsutae Sato in Lacombe, Alberta; 1942-1952

Item Date 1942



Item Description

The item consists of a black and white photograph of Hanako and Tsutae Sato standing posing in front of a hedge. Hanako is wearing a polka dot dress and Tsutae is wearing a button-up shirt and pants. There is an annotation in Japanese on the back translated in English as "In Lacombe, Alberta / Sato Tsutae / Hanako / 1942-1952"

Collection Tsutae and Hanako Sato fonds

Series Photographs

File

Accession Number 1996.170.16.22

Item Title Dedication of torii to family shrine; location unknown; 1954

Item Date 1954



Item Description

The item consists of a black and white photograph of a group of adults and children standing and sitting in front of a torii (an arch), dedicated to the shrine which belonged to their village or town. The people are wearing traditional Japanese clothes and Western clothes with some women in kimono, men in the front row wearing tabi (socks), and the man sitting in the centre of the first row in all white wearing zori (sandals). Trees are visible in the background. There is Japanese writing on the torii as well as on the photograph itself, including the date January 18, Showa Era 29 (1954).

Nikkei National Museum & Cultural Centre
www.nikkeimuseum.org

Collection Tsutae and Hanako Sato fonds

Series Photographs

File

Accession Number 1996.170.16.23

Item Title Unidentified urn [?]; location unknown

Item Date 1960



Item Description

The item consists of a colour photograph of a what appears to be a metal urn on a table with a fireplace in the background. The image was sent to Tsutae Sato to find someone to purchase it.

Collection Tsutae and Hanako Sato fonds

Series Photographs

File

Accession Number 1996.170.16.24

Item Title Hi-fi presented to Tsutae and Hanako Sato by Gakuyu-kai; location unknown; 1958

Item Date 1958



Item Description

The item consists of a black and white photograph showing Tsutae Sato (left) and another man (right) standing in front of a hi-fi set. The photograph was taken on the occasion of the hi-fi is being presented to Tsutae and Hanako Sato by Gakuyu-kai. Tsutae appears to be receiving an envelope. The hi-fi is visible behind the two men. There is a flower pot on top of it. The photograph was taken in a room with artwork on the walls and a fireplace. There is a caption in Japanese written on the back of the photograph including a February 1958 date which also appears in printed English on the side of the front of the photograph.

Collection Tsutae and Hanako Sato fonds

Series Photographs

File

Accession Number 1996.170.16.25

Item Title Hi-fi presented to Tsutae and Hanako Sato by Gakuyu-kai; location unknown; 1958

Item Date 1958



Item Description

The item consists of a black and white photograph showing Tsutae Sato (left) and another man (right) standing in front of a hi-fi set. The photograph was taken on the occasion of the hi-fi is being presented to Tsutae and Hanako Sato by Gakuyu-kai. Tsutae appears to be receiving an envelope. The hi-fi is visible behind the two men. There is a flower pot on top of it. The photograph was taken in a room with artwork on the walls and a fireplace. There is a caption in Japanese written on the back of the photograph including a February 1958 date and text printed English on the side of the front of the photograph with the date January 1958.

Collection Tsutae and Hanako Sato fonds

Series Photographs

File

Accession Number 1996.170.16.26

Item Title Vancouver Japanese Language School; 439 Alexander Street, Vancouver, B.C.

Item Date 1909



Item Description

The item consists of a black and white photograph of an extension of the Vancouver Japanese Language School. The photograph shows a side frontal view of a two-storey wood building with an A frame roof. Another longer building is abutting it. In the foreground is a street and a playground area. A fence divides the playground and the building's yard. There is one child sitting on the fence and more children sitting and standing on the stairs beside the fence.

Collection Tsutae and Hanako Sato fonds

Series Photographs

File

Accession Number 1996.170.16.27

Item Title A Portrait of Vincent Way-Nee; location unknown

Item Date 1960



Item Description

The item consists of a black and white photograph of a young boy wearing a button-up collared, short-sleeve shirt and shorts. The boy is Vincent Way-Nee. He is sitting cross legged with his hand folded on a carpeted floor in what appears to be a living room. Set before him on the carpet is a Canadian flag and armchairs and a table with books and a plant are visible in the background. On the reverse of the image it reads, "Vincent Way-Nee, 5 years old".

Collection Tsutae and Hanako Sato fonds

Series Photographs

File

Accession Number 1996.170.16.28

Item Title Tsutae Sato, Hanako Sato, and Tama Miyazaki; Raymond, B.C.; 1944

Item Date 1944



Item Description

The item consists of a black and white photograph showing Tsutae Sato, Hanako Sato, and Tama Miyazaki standing outside in front of a white wood building. Tsutae wears a three-piece suit and both women wear overcoats. On the reverse of the photograph is Japanese writing and "June 17, 1944" in English.

Collection Tsutae and Hanako Sato fonds

Series Photographs

File

Accession Number 1996.170.16.29

Item Title Tsutae Sato, Ritsu I?, Yasu Iguchi, Ritsu Kagawa; location unknown; 1959

Item Date 1959



Item Description

The item consists of a black and white photograph showing two men and two women standing outside on the street in front of what appears to be a storefront. The men wear hats, ties, and overcoats and the women wear hats and overcoats with fur collars. Tsutae Sato is the man on the far left and is holding papers. Visible through the store's windows are decorative curtains and three people sitting with their backs turned to the window. There is a caption in Japanese on the back of the photograph including a date reading, "March 10, 1959".