

Collection Yamake Family collection

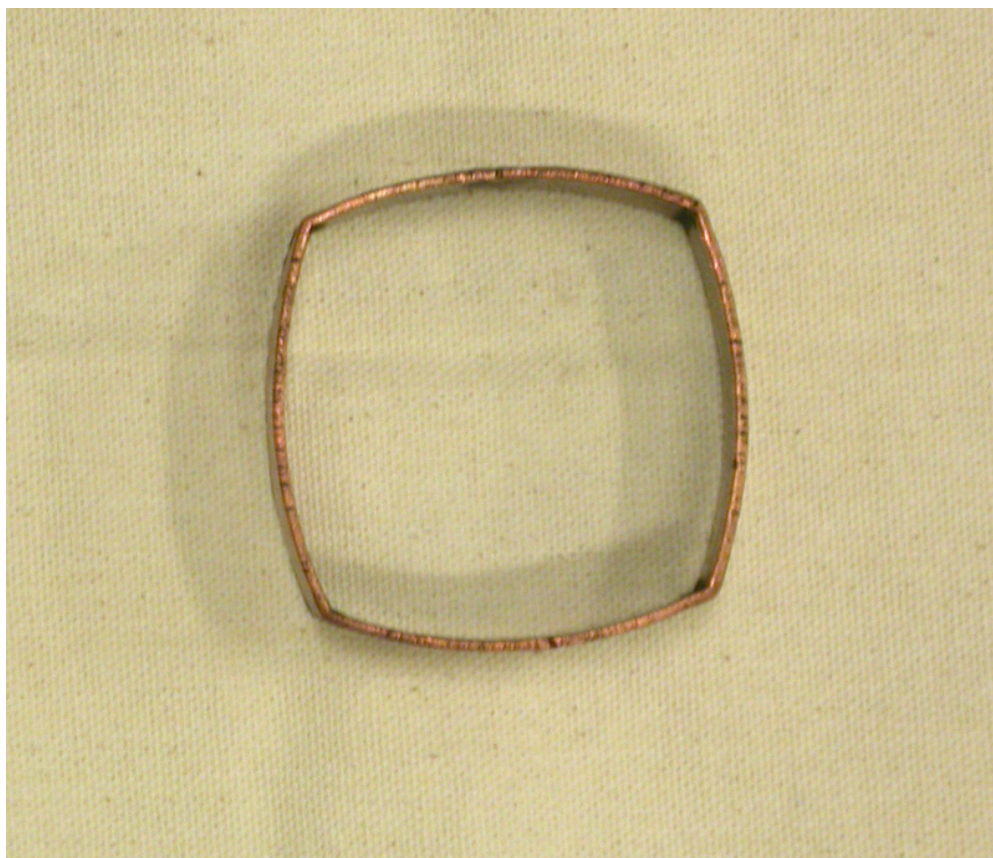
Series

File

Accession Number 1997.9.1.a-l

Item Title Manju Kata

Item Date 1941



Item Description Copper mold rings that are slightly rounded on the edges.

Collection Yamake Family collection

Series

File

Accession Number 1997.9.2.a-q

Item Title Manju Kata

Item Date 1941



Item Description Brass mold rings that are slightly rounded on the edges.

Nikkei National Museum & Cultural Centre
www.nikkeimuseum.org

Collection Yamake Family collection

Series

File

Accession Number 1997.9.3

Item Title Yokan Cutter

Item Date 1920



Item Description

A small brass? metal yokan cutter in the shape of a leaf?. The cutter is made from a thin metal loop similar to a small bottomless cup. The cup was then shaped by bending and creasing its sharp bottom edge. The none-cutter side has a lip that acts as padding for the hand.

Collection Yamake Family collection

Series

File

Accession Number 1997.9.4

Item Title Yokan Cutter

Item Date 1920



Item Description

A small brass? metal yokan cutter in the shape of a duck. The cutter is made from a thin metal loop similar to a small bottomless cup. The cup was then shaped by bending and creasing its sharp bottom edge. The none-cutter side has a lip that acts as padding for the hand.

Nikkei National Museum & Cultural Centre
www.nikkeimuseum.org

Collection Yamake Family collection

Series

File

Accession Number 1997.9.5

Item Title Yokan Cutter

Item Date 1920



Item Description

A small brass? metal yokan cutter in the shape of a of two circles (medium and large) with a smaller one atop the medium size one. The cutter is made from a thin metal loop similar to a small bottomless cup. The cup was then shaped by bending and creasing its sharp bottom edge. The none-cutter side has a lip that acts as padding for the hand.

Nikkei National Museum & Cultural Centre
www.nikkeimuseum.org

Collection Yamake Family collection

Series

File

Accession Number 1997.9.6

Item Title Yokan Cutter

Item Date 1920

Item Description

A small brass? metal yokan cutter in the shape of a leaf. The cutter is made from a thin metal loop similar to a small bottomless cup. The cup was then shaped by bending and creasing its sharp bottom edge. The none-cutter side has a lip that acts as padding for the hand.

Nikkei National Museum & Cultural Centre
www.nikkeimuseum.org

Collection Yamake Family collection

Series

File

Accession Number 1997.9.7

Item Title Yokan Cutter

Item Date 1920

Item Description

A small brass? metal yokan cutter in the shape of a butterfly. The cutter is made from a thin metal loop similar to a small bottomless cup. The cup was then shaped by bending and creasing its sharp bottom edge. The none-cutter side has a lip that acts as padding for the hand.

Collection Yamake Family collection

Series

File

Accession Number 1997.9.8

Item Title Yokan Cutter

Item Date 1920



Item Description

A small brass? metal yokan cutter in the shape of a diving dolphin. The cutter is made from a thin metal loop similar to a small bottomless cup. The cup was then shaped by bending and creasing its sharp bottom edge. The none-cutter side has a lip that acts as padding for the hand.

Collection Yamake Family collection

Series

File

Accession Number 1997.9.9

Item Title Yokan Cutter

Item Date 1920



Item Description

A small brass? metal yokan cutter in the shape of a loose heart. The cutter is made from a thin metal loop similar to a small bottomless cup. The cup was then shaped by bending and creasing its sharp bottom edge. The none-cutter side has a lip that acts as padding for the hand.

Collection Yamake Family collection

Series

File

Accession Number 1997.9.10

Item Title Yokan Cutter

Item Date 1920



Item Description

A small brass? metal yokan cutter in the shape of a cow or bull. The cutter is made from a thin metal loop similar to a small bottomless cup. The cup was then shaped by bending and creasing its sharp bottom edge. The none-cutter side has a lip that acts as padding for the hand.

Nikkei National Museum & Cultural Centre
www.nikkeimuseum.org

Collection Yamake Family collection

Series

File

Accession Number 1997.9.11

Item Title Yokan Cutter

Item Date 1920

Item Description

A small brass? metal yokan cutter in the shape of a leaf. The cutter is made from a thin metal loop similar to a small bottomless cup. The cup was then shaped by bending and creasing its sharp bottom edge. The none-cutter side has a lip that acts as padding for the hand.

Collection Yamake Family collection

Series

File

Accession Number 1997.9.12

Item Title Yokan Cutter

Item Date 1920



Item Description

A small brass? metal yokan cutter in the shape of a reverse fan?. The cutter is made from a thin metal loop similar to a small bottomless cup. The cup was then shaped by bending and creasing its sharp bottom edge. The none-cutter side has a lip that acts as padding for the hand.

Collection Yamake Family collection

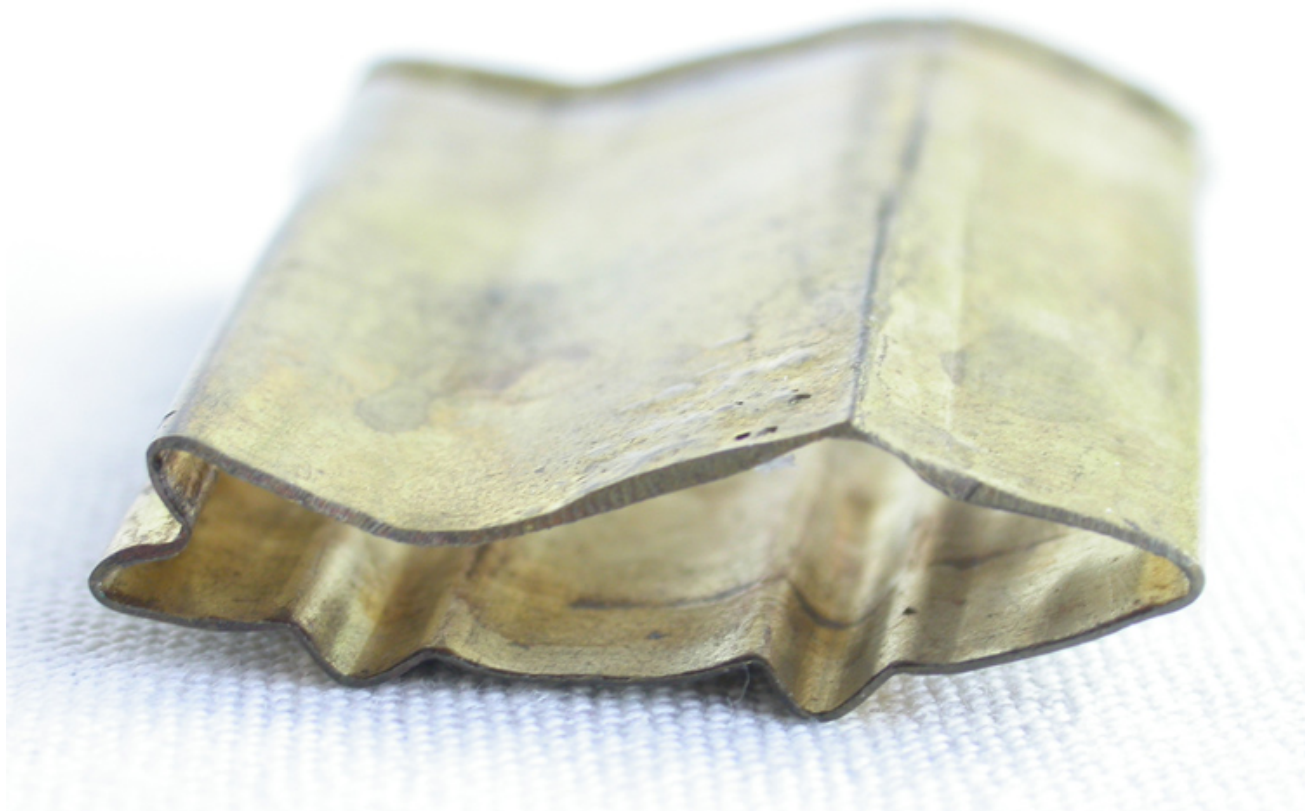
Series

File

Accession Number 1997.9.13

Item Title Yokan Cutter

Item Date 1920



Item Description

A small brass? metal yokan cutter in the shape of a shark. The cutter is made from a thin metal loop similar to a small bottomless cup. The cup was then shaped by bending and creasing its sharp bottom edge. The none-cutter side has a lip that acts as padding for the hand.

Nikkei National Museum & Cultural Centre
www.nikkeimuseum.org

Collection Yamake Family collection

Series

File

Accession Number 1997.9.14

Item Title Yokan Cutter

Item Date 1920

Item Description

A small brass? metal yokan cutter in the shape of a daisy/cloud. The cutter is made from a thin metal loop similar to a small bottomless cup. The cup was then shaped by bending and creasing its sharp bottom edge. The none-cutter side has a lip that acts as padding for the hand.

Collection Yamake Family collection

Series

File

Accession Number 1997.9.15

Item Title Yokan Cutter

Item Date 1920



Item Description

A small brass? metal yokan cutter in the shape of a trefoil or three leaf clover?. The cutter is made from a thin metal loop similar to a small bottomless cup. The cup was then shaped by bending and creasing its sharp bottom edge. The none-cutter side has a lip that acts as padding for the hand.

Nikkei National Museum & Cultural Centre
www.nikkeimuseum.org

Collection Yamake Family collection

Series

File

Accession Number 1997.9.16

Item Title Yokan Cutter

Item Date 1920

Item Description

A small brass? metal yokan cutter in the shape of a pepper?. The cutter is made from a thin metal loop similar to a small bottomless cup. The cup was then shaped by bending and creasing its sharp bottom edge. The none-cutter side has a lip that acts as padding for the hand.

Collection Yamake Family collection

Series

File

Accession Number 1997.9.17

Item Title Yokan Cutter

Item Date 1920



Item Description

A small brass? metal yokan cutter in the shape of a bird in flight. The cutter is made from a thin metal loop similar to a small bottomless cup. The cup was then shaped by bending and creasing its sharp bottom edge. The none-cutter side has a lip that acts as padding for the hand.

Collection Yamake Family collection

Series

File

Accession Number 1997.9.18

Item Title Yokan Cutter

Item Date 1920



Item Description

A small brass? metal yokan cutter of an abstract shape (possibly ginkgo leaf) where the circle is folded into three areas; one area has 6 wavy folds, the second area has 3 wavy folds and the third is one larger wavy fold. The cutter is made from a thin metal loop similar to a small bottomless cup. The cup was then shaped by bending and creasing its sharp bottom edge. The none-cutter side has a lip that acts as padding for the hand.

Collection Yamake Family collection

Series

File

Accession Number 1997.9.19

Item Title Yokan Cutter

Item Date 1920



Item Description

A small brass? metal yokan cutter in the shape of a tree?. The cutter is made from a thin metal loop similar to a small bottomless cup. The cup was then shaped by bending and creasing its sharp bottom edge. The none-cutter side has a lip that acts as padding for the hand.

Nikkei National Museum & Cultural Centre
www.nikkeimuseum.org

Collection Yamake Family collection

Series

File

Accession Number 1997.9.20

Item Title Yokan Cutter

Item Date 1920

Item Description

A small brass? metal yokan cutter in the shape of a fern leaf. The cutter is made from a thin metal loop similar to a small bottomless cup. The cup was then shaped by bending and creasing its sharp bottom edge. The none-cutter side has a lip that acts as padding for the hand.

Collection Yamake Family collection

Series

File

Accession Number 1997.9.21

Item Title Yokan Cutter

Item Date 1920



Item Description

A small brass? metal yokan cutter in the shape of a heart. The cutter is made from a thin metal loop similar to a small bottomless cup. The cup was then shaped by bending and creasing its sharp bottom edge. The none-cutter side has a lip that acts as padding for the hand.

Collection Yamake Family collection

Series

File

Accession Number 1997.9.22

Item Title Yokan Cutter

Item Date 1920



Item Description

A small brass? metal yokan cutter of a penguin sliding on the snow (possibly calabash gourd/hyotan). The cutter is made from a thin metal loop similar to a small bottomless cup. The cup was then shaped by bending and creasing its sharp bottom edge. The none-cutter side has a lip that acts as padding for the hand.

Collection Yamake Family collection

Series

File

Accession Number 1997.9.23

Item Title Yokan Cutter

Item Date 1920



Item Description

A small brass? metal yokan cutter in the shape of a tree?. The cutter is made from a thin metal loop similar to a small bottomless cup. The cup was then shaped by bending and creasing its sharp bottom edge. The none-cutter side has a lip that acts as padding for the hand.

Collection Yamake Family collection

Series

File

Accession Number 1997.9.24

Item Title Yokan Cutter

Item Date 1920



Item Description

A small brass? metal yokan cutter in the shape of a three circles; two large and one small (possible hyotan). The cutter is made from a thin metal loop similar to a small bottomless cup. The cup was then shaped by bending and creasing its sharp bottom edge. The non-cutter side has a lip that acts as padding for the hand.

Collection Yamake Family collection

Series

File

Accession Number 1997.9.25

Item Title Yokan Cutter

Item Date 1920



Item Description

A small brass? metal yokan cutter in the shape of three Us (possibly cloud or pine motif). The cutter is made from a thin metal loop similar to a small bottomless cup. The cup was then shaped by bending and creasing its sharp bottom edge. The none-cutter side has a lip that acts as padding for the hand.

Nikkei National Museum & Cultural Centre
www.nikkeimuseum.org

Collection Yamake Family collection

Series

File

Accession Number 1997.9.26

Item Title Yokan Cutter

Item Date 1920

Item Description

A small brass? metal yokan cutter in the shape of a lemon. The cutter is made from a thin metal loop similar to a small bottomless cup. The cup was then shaped by bending and creasing its sharp bottom edge. The none-cutter side has a lip that acts as padding for the hand.

Nikkei National Museum & Cultural Centre
www.nikkeimuseum.org

Collection Yamake Family collection

Series

File

Accession Number 1997.9.27

Item Title Yokan Cutter

Item Date 1920

Item Description

A small brass? metal yokan cutter in the shape of a gourd. The cutter is made from a thin metal loop similar to a small bottomless cup. The cup was then shaped by bending and creasing its sharp bottom edge. The none-cutter side has a lip that acts as padding for the hand.

Collection Yamake Family collection

Series

File

Accession Number 1997.9.28

Item Title Yokan Cutter

Item Date 1920



Item Description

A small brass? metal yokan cutter in the shape of a bird. The cutter is made from a thin metal loop similar to a small bottomless cup. The cup was then shaped by bending and creasing its sharp bottom edge. The none-cutter side has a lip that acts as padding for the hand.

Nikkei National Museum & Cultural Centre
www.nikkeimuseum.org

Collection Yamake Family collection

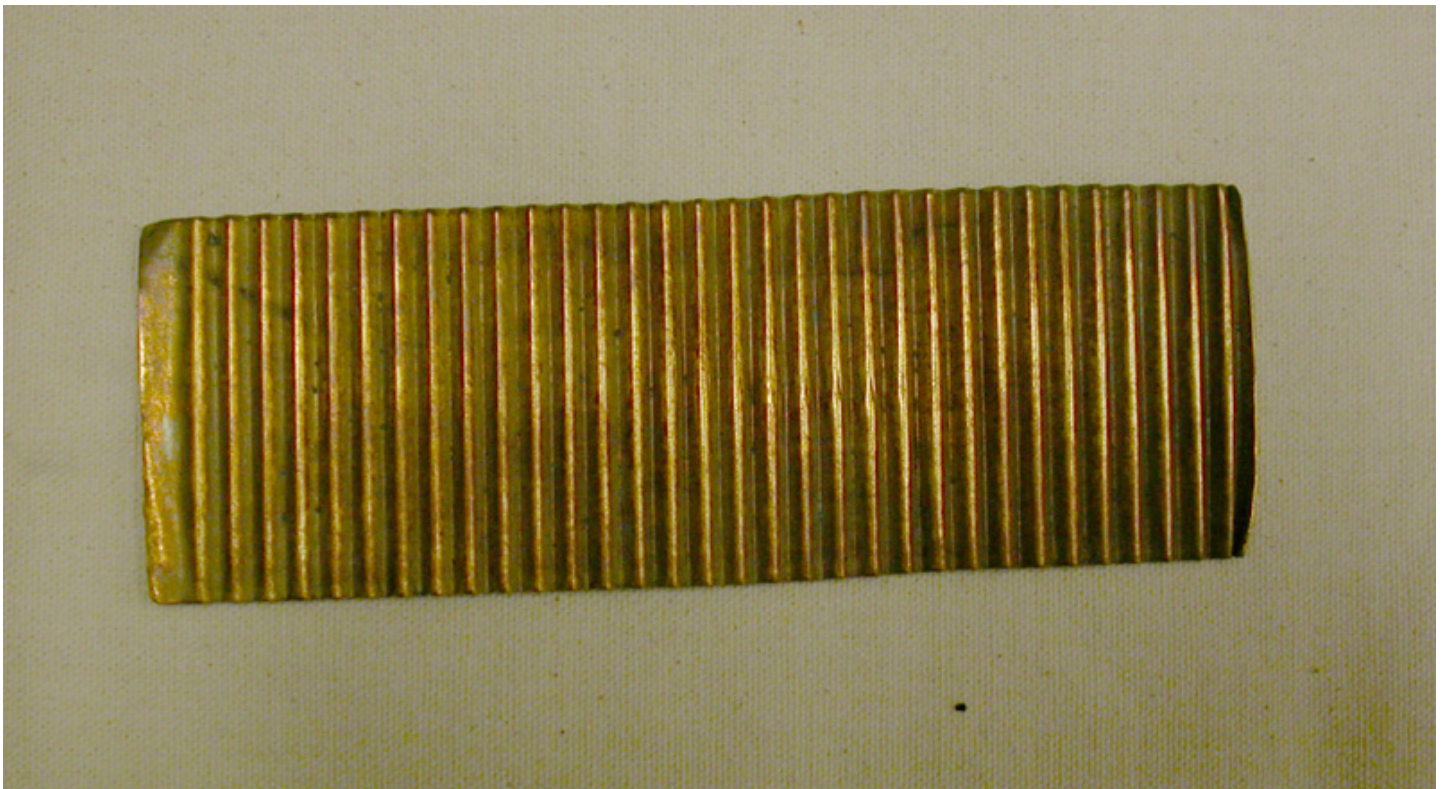
Series

File

Accession Number 1997.9.29

Item Title Nami Gata (Wave-shaped decorating tool)

Item Date 1941



Item Description Brass wave-shaped plate.

Nikkei National Museum & Cultural Centre
www.nikkeimuseum.org

Collection Yamake Family collection

Series

File

Accession Number 1997.9.30

Item Title

Item Date

Item Description

Collection Yamake Family collection

Series

File

Accession Number 1997.9.31

Item Title Hera

Item Date 1941



Item Description

Brass spatula that has a tiny circular hole at one end. Embossed on the back near the middle of the plate is a character.

Nikkei National Museum & Cultural Centre
www.nikkeimuseum.org

Collection Yamake Family collection

Series

File

Accession Number 1997.9.32

Item Title Hera (Confectioner's Spatula)

Item Date 1941

Item Description One mm thick brass spatula with a 4 mm circular hole at one end. Embossed on the back near the middle of the plate is a "10".

Nikkei National Museum & Cultural Centre
www.nikkeimuseum.org

Collection Yamake Family collection

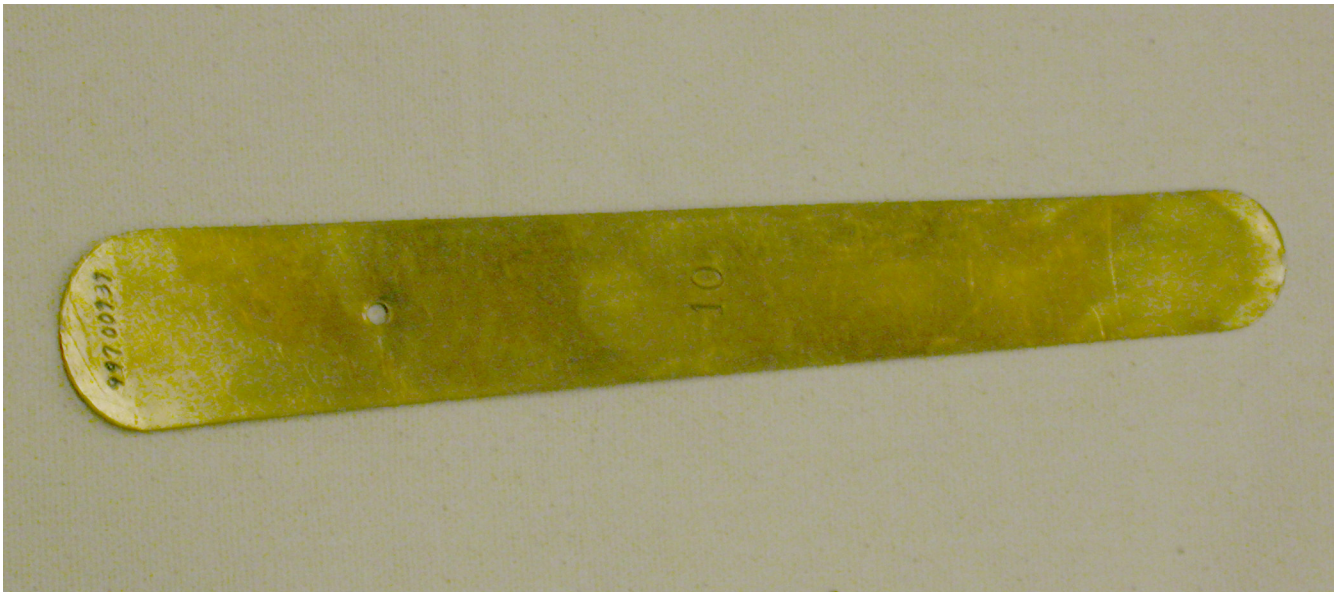
Series

File

Accession Number 1997.9.33

Item Title Hera

Item Date 1941



Item Description

Brass spatula with a hole quarter of a way down its body. Embossed on its back is the number "10."

Nikkei National Museum & Cultural Centre
www.nikkeimuseum.org

Collection Yamake Family collection

Series

File

Accession Number 1997.9.34

Item Title Manju Iron

Item Date 1920

Item Description A cast iron stamp with an angled long metal handle. The cake iron's head bulbs out from the curved handle with a profile shape of a flower. On the top is the raised decorative pattern of a flower with eleven petals.

Collection Yamake Family collection

Series

File

Accession Number 1997.9.35

Item Title Manju Iron

Item Date 1920



Item Description

A cast iron stamp with a long spike-like handle. The cast iron's head bulbs out from the handle with a profile shape of a tulip finished in a round top. On the top is the raised decorative writing? or pattern framed in a circular border.

Collection Yamake Family collection

Series

File

Accession Number 1997.9.36

Item Title Manju Iron

Item Date 1920



Item Description

A cast iron stamp with an angled long metal handle. The cake iron's head bulbs out from the curved handle with a profile shape of a flower. On the top is the raised decorative pattern of a seven petalled leaf.

Collection Yamake Family collection

Series

File

Accession Number 1997.9.37

Item Title Manju Iron

Item Date 1920



Item Description

A cast iron stamp with a long spike-like handle. The cast iron's head bulbs out from the handle with a profile shape of a tulip finished in a round top. On the top is the raised decorative writing? or pattern framed in a circular border.

Nikkei National Museum & Cultural Centre
www.nikkeimuseum.org

Collection Yamake Family collection

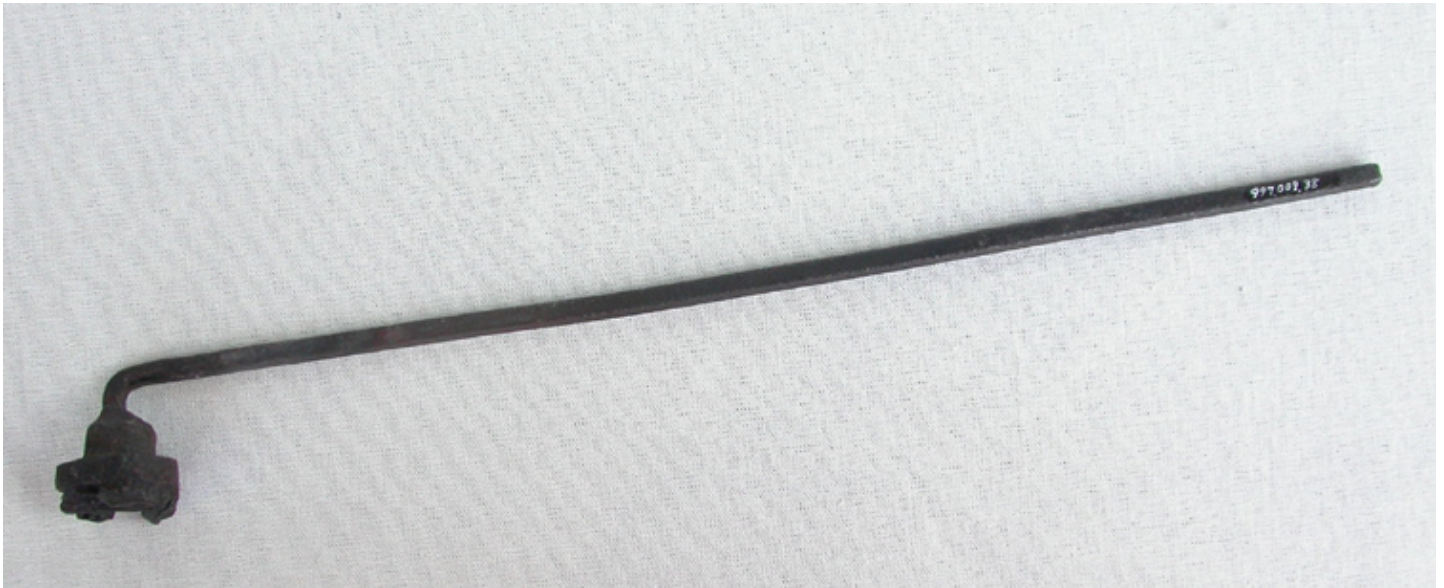
Series

File

Accession Number 1997.9.38

Item Title Manju Iron

Item Date 1920



Item Description

A cast iron stamp with an angled long metal handle. The cake iron's head bulbs out from the curved handle with a profile shape of a flower. On the top is the raised decorative pattern of a flower complete with a stem and two leaves.

Collection Yamake Family collection

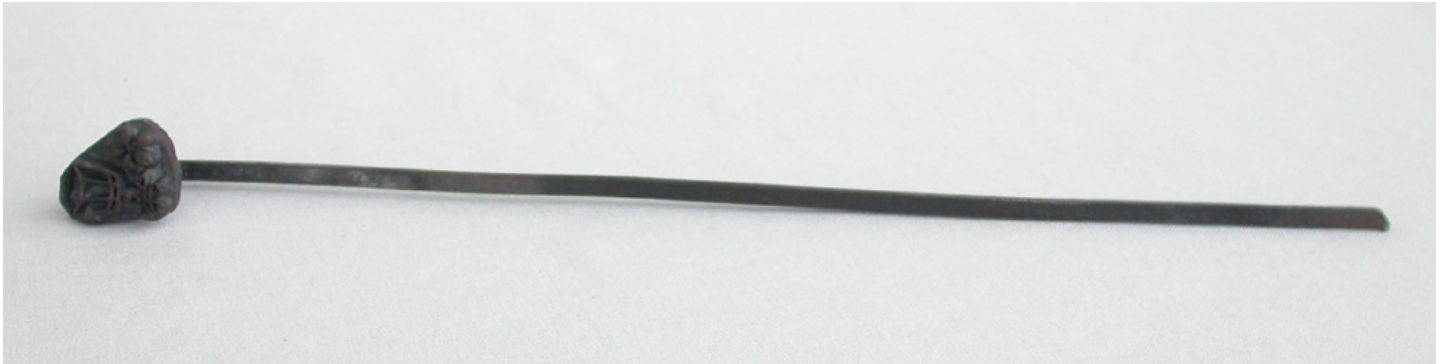
Series

File

Accession Number 1997.9.39

Item Title Manju Iron

Item Date 1920



Item Description

A cast iron stamp with an angled long metal handle. The cast iron's head bulbs out from the curved handle with a profile shape of a flower. On the top is the raised decorative pattern of two five-petaled flowers and a hexagonal shaped object.

Collection Yamake Family collection

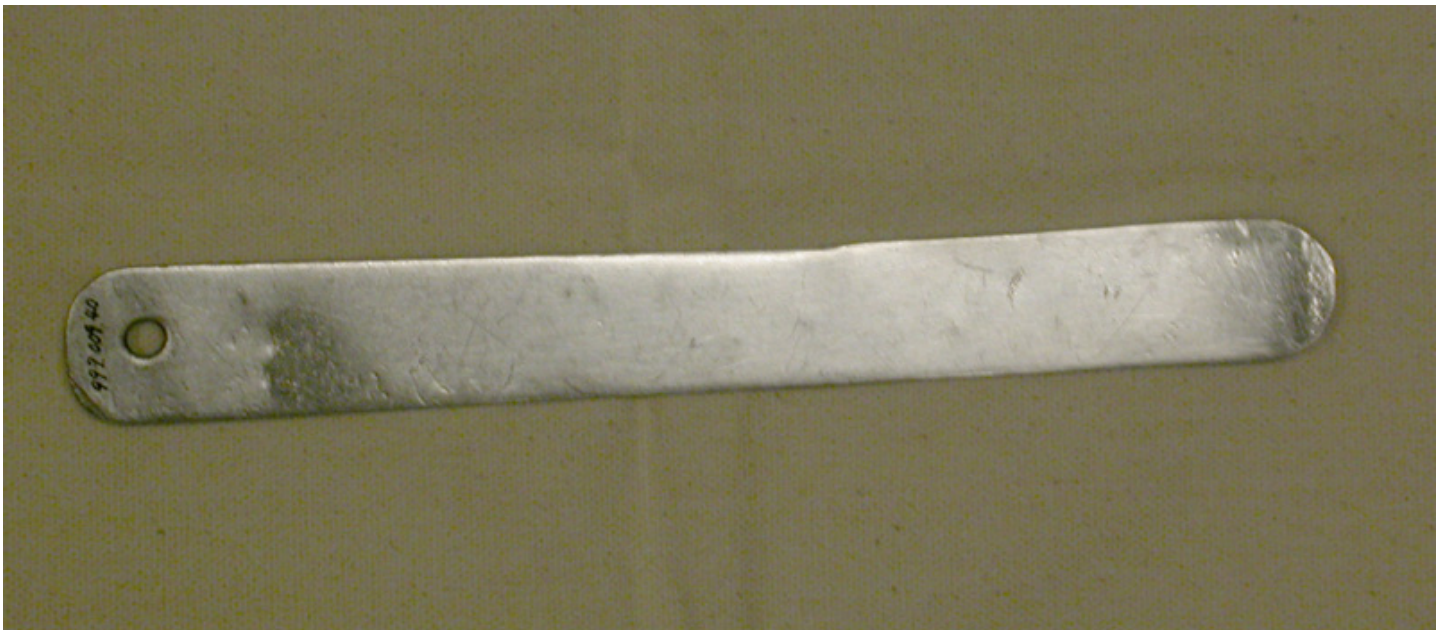
Series

File

Accession Number 1997.9.40

Item Title Hera

Item Date 1941



Item Description Aluminum spatula with circular hole at one end.

Collection Yamake Family collection

Series

File

Accession Number 1997.9.41

Item Title

Item Date 1941



Item Description

Brass spoon with shallow bowl. Additional handle attached is made of bamboo. Copper coil wrapped on the neck and middle of the handle. Silver metal coiled at the top of the handle.

Nikkei National Museum & Cultural Centre
www.nikkeimuseum.org

Collection Yamake Family collection

Series

File

Accession Number 1997.9.42

Item Title

Item Date 1941



Item Description Brass spatula with bamboo handle that's affixed with metal coil. Embossed on the neck is the number "25."

Nikkei National Museum & Cultural Centre
www.nikkeimuseum.org

Collection Yamake Family collection

Series

File

Accession Number 1997.9.43

Item Title Confectioner's Ladle

Item Date 1941

Item Description

Round brass ladle with a wood handle. The wood is fastened onto the tang with a twisted metal wire at the bottom and top ends of the string. "14" is stamped onto the top face of the tang, where it widens.

Nikkei National Museum & Cultural Centre
www.nikkeimuseum.org

Collection Yamake Family collection

Series

File

Accession Number 1997.9.44

Item Title

Item Date 1941



Item Description Brass spoon with shallow bowl and pointed tip handle.

Nikkei National Museum & Cultural Centre
www.nikkeimuseum.org

Collection Yamake Family collection

Series

File

Accession Number 1997.9.45

Item Title Hera (Confectioner's Spatula)

Item Date 1941

Item Description Two mm thick brass tang and .5 mm spatula head. Stamped on the object is "25".

Nikkei National Museum & Cultural Centre
www.nikkeimuseum.org

Collection Yamake Family collection

Series

File

Accession Number 1997.9.46

Item Title

Item Date 1941



Item Description

Brass spoon with curved out handle and a shallow bowl. Number "15" embossed on the neck of the handle.

Nikkei National Museum & Cultural Centre
www.nikkeimuseum.org

Collection Yamake Family collection

Series

File

Accession Number 1997.9.47.a-b

Item Title Kashi Kata (Wooden Molds)

Item Date 1941

Item Description

The wooden mold is made up of two parts: the etched bottom depicts a plum blossom, while the top is opened. The two pieces are secured together by the two dowels on the end of "A," which locks in with the holes in "B." On the bottom edge of the molds it has three lines etched out of it. At the bottom right corner of "A" is inked with "Made In Japan." and "16".

Collection Yamake Family collection

Series

File

Accession Number 1997.9.48.a-b

Item Title Kashi Kata (Wooden Molds)

Item Date 1941



Item Description

The wooden mold is made up of two parts: the etched bottom depicts a turtle, while the top is opened. The two pieces are secured together by the two dowels on the end of "A," which locks in with the holes in "B." On the bottom edge of the molds it has a single line is etched out of it. At the bottom right corner of "A" is inked with "Made In Japan."

Collection Yamake Family collection

Series

File

Accession Number 1997.9.49.a-b

Item Title Kashi Kata (Wooden Molds)

Item Date 1941



Item Description

The wooden mold is made up of two parts: the etched bottom depicts a crane, while the top is opened. The two pieces are secured together by the two dowels on the end of "A," which locks in with the holes in "B." At the bottom right corner of "A" is inked with "Made In Japan."

Collection Yamake Family collection

Series

File

Accession Number 1997.9.50.a-b

Item Title Kashi Kata (Wooden Molds)

Item Date 1941



Item Description

The wooden mold is made up of two parts: the etched bottom depicts a bamboo and floral motif, while the top is opened. The two pieces are secured together by the two dowels on the end of "A," which locks in with the holes in "B." On the bottom edge of the molds it has one line etched out of it. At the bottom right corner of "A" is inked with "Made In Japan."

Nikkei National Museum & Cultural Centre
www.nikkeimuseum.org

Collection Yamake Family collection

Series

File

Accession Number 1997.9.51.a-b

Item Title Kashi Kata (Wooden Molds)

Item Date 1941



Item Description

The wooden mold is made up of two parts: the etched bottom depicts a pine, while the top is opened. The two pieces are secured together by the two dowels on the end of "A," which locks in with the holes in "B." On the bottom edge of the molds it has two lines etched out of it. At the bottom right corner of "A" is inked with "Made In Japan."

Collection Yamake Family collection

Series

File

Accession Number 1997.9.52.a-b

Item Title Kashi Kata (Wooden Molds)

Item Date 1941



Item Description

The wooden mold is made up of two parts: the etched bottom depicts a fish (*tai*), while the top is opened. The two pieces are secured together by the two dowels on the end of "A," which locks in with the holes in "B." On the bottom edge of the molds it has three lines etched out of it. At the bottom right corner of "A" is inked with "Made In Japan."

Collection Yamake Family collection

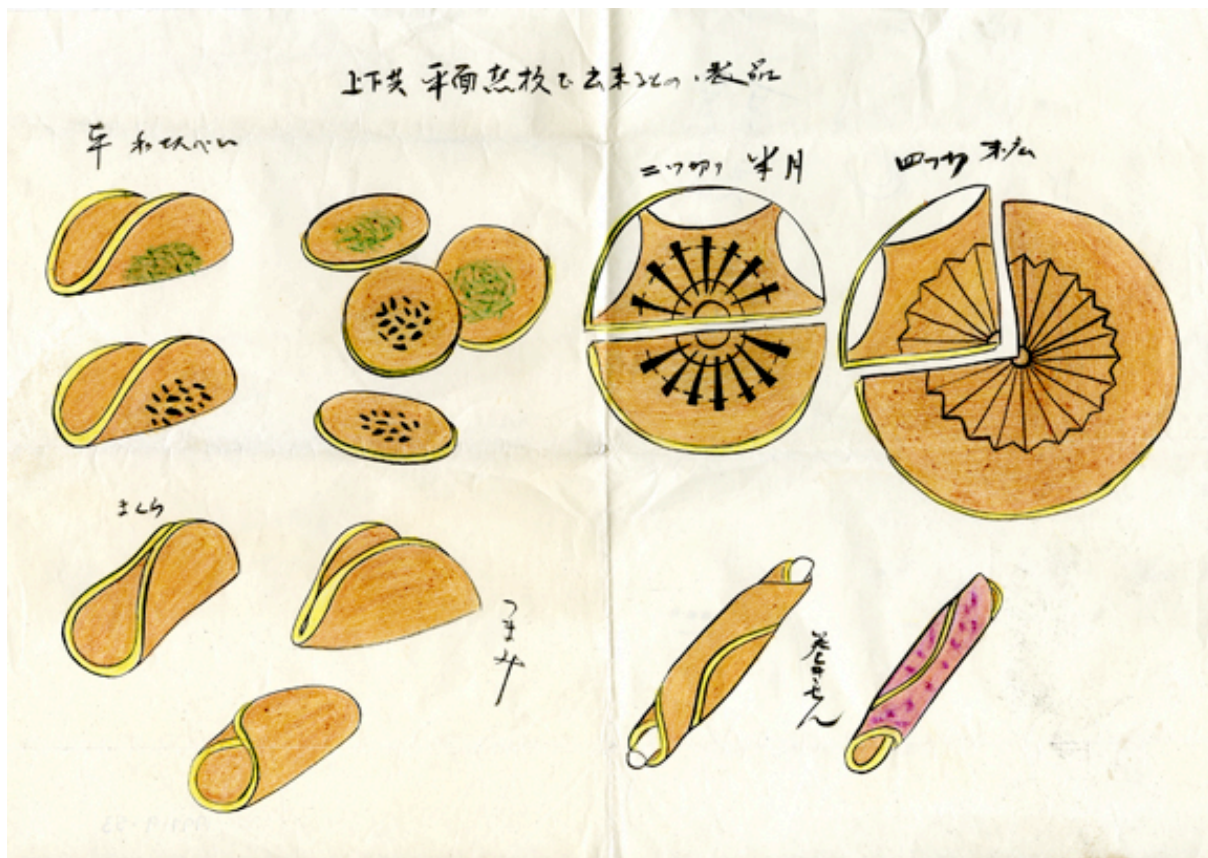
Series

File

Accession Number 1997.9.53

Item Title Drawing of Manju

Item Date 1941



Item Description

A drawing of five groupings showing different styles of manju. The drawings are outlined in black ink and filled in with yellow and brown pencil crayons with green accents in the first grouping. The last grouping shows two rolled manju cakes the second one is coloured pink rather than brown. Japanese writing is found at the top of the drawing and in six areas labeling the manju. There is also Japanese writing carried out in pencil on the back.

Collection Yamake Family collection

Series

File

Accession Number 1997.9.54

Item Title Drawing of Senbei

Item Date 1941



Item Description

A drawing of twelve senbei showing their different styles. The drawings are outlined in black ink and filled in with yellow and brown pencil crayons with black ink details. Japanese writing is found at the top of the drawing and beside each senbei, serving as a label. Some shapes of senbei include, a leaf, an acorn, a turtle, a grumpy daruma and flowers.

Collection Yamake Family collection

Series

File

Accession Number 1997.9.55

Item Title An Interview of Shirley Omatsu (before Kakutani, nee Yamake); Vancouver, BC

Item Date 1997



Item Description

An interview of Shirley Omatsu (before Kakutani, nee Yamake) recorded on October 29, 1997 in Vancouver, BC. The interview discusses her father's shop and the manju making tools that are part of this collection.

Collection Yamake Family collection

Series

File

Accession Number 1997.9.56.a-b

Item Title An Interview of Shirley Omatsu (before Kakutani, nee Yamake); Vancouver, BC

Item Date 1997



Item Description

An interview of Shirley Omatsu (before Kakutani, nee Yamake) conducted by Susan Sirovyak, Naomi Sawada and Akiko Gonnami on July 21, 1997 in Vancouver, BC. The interview discusses Shirley's memories on Powell Street in Vancouver, BC.

Nikkei National Museum & Cultural Centre
www.nikkeimuseum.org

Collection Yamake Family collection

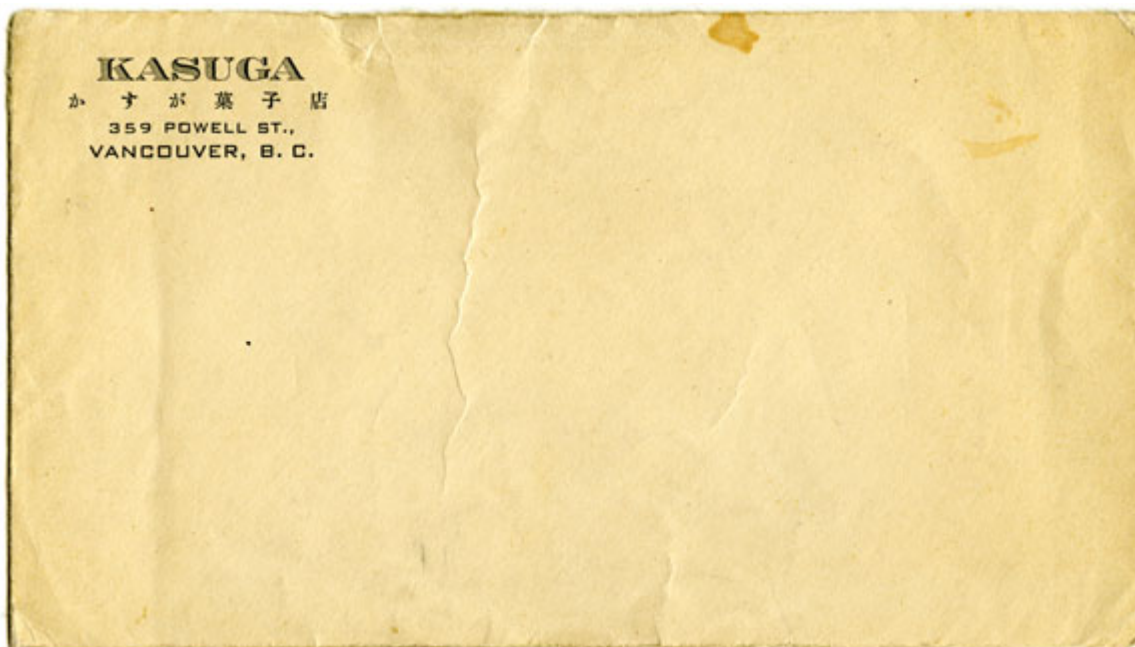
Series

File

Accession Number 1997.9.57

Item Title Kasuga Envelope

Item Date 1940



Item Description

The item consists of an envelope with the "Kasuga 359 Powell St., Vancouver, B.C." letterhead on the upper left corner.