

Nikkei National Museum & Cultural Centre
www.nikkeimuseum.org

Collection Morishita Family collection
Series Ebisuzaki Shoten (Business) Items
File Objects used at the Ebisuzaki Shoten

Accession Number 2011.79.3.8.1

Item Title Administrative file trays from the Ebisuzaki Shoten

Item Date 1942



Item Description Four nesting wire trays. The bottom tray has feet and its front scoops down.

Nikkei National Museum & Cultural Centre
www.nikkeimuseum.org

Collection	Morishita Family collection
Series	Ebisuzaki Shoten (Business) Items
File	Objects used at the Ebisuzaki Shoten
Accession Number	2011.79.3.8.2
Item Title	Seamstress ruler
Item Date	1942



Item Description A bamboo oil finished ruler marked in black with lines and dots to denote measurements. There is a hole at the end of one side of the ruler with a green string looped through.

Nikkei National Museum & Cultural Centre
www.nikkeimuseum.org

Collection Morishita Family collection

Series Ebisuzaki Shoten (Business) Items

File Objects used at the Ebisuzaki Shoten

Accession Number 2011.79.3.8.3

Item Title Seamstress ruler

Item Date 1942

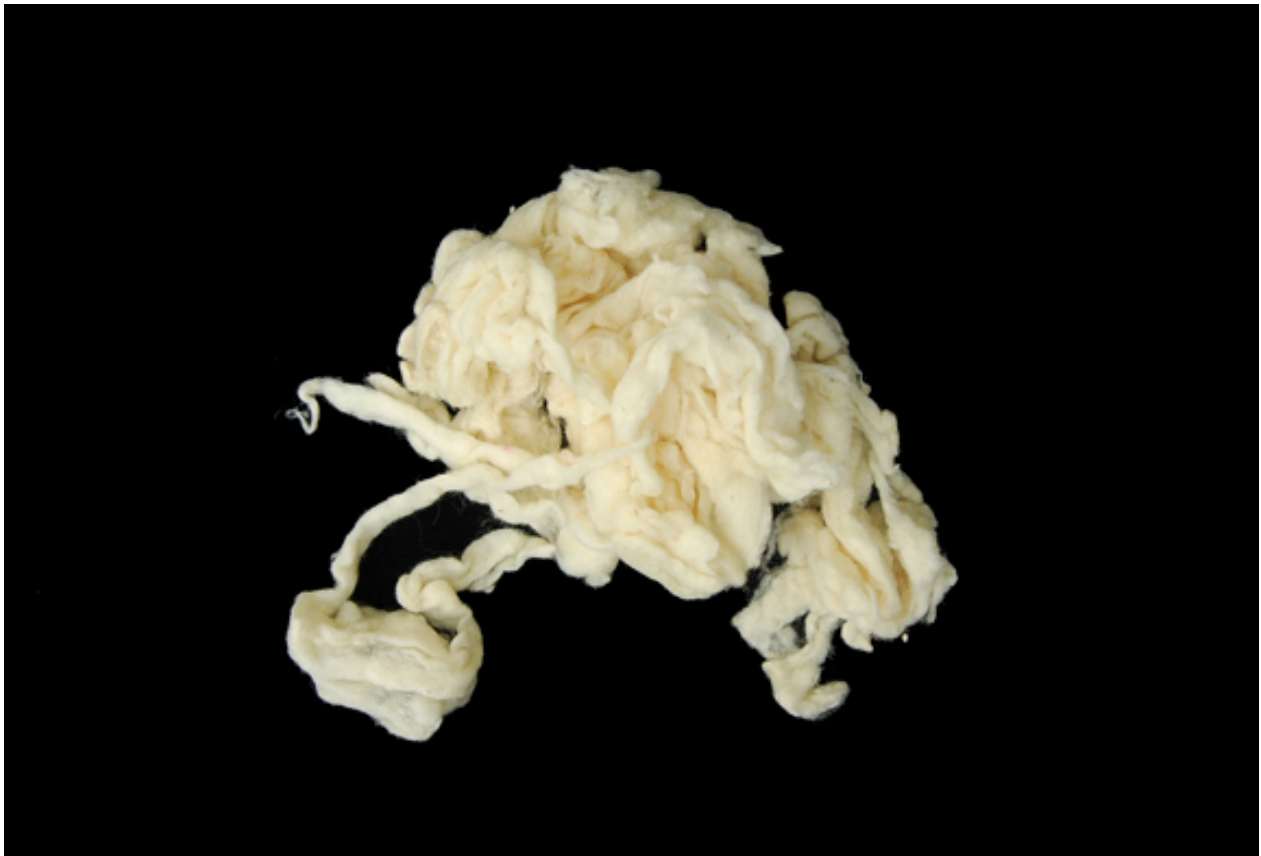


Item Description A bamboo oil finished ruler marked in black with lines and dots to denote measurements.

Nikkei National Museum & Cultural Centre
www.nikkeimuseum.org

Collection Morishita Family collection
Series Ebisuzaki Shoten (Business) Items
File Objects used at the Ebisuzaki Shoten

Accession Number 2011.79.3.8.4
Item Title Futon Stuffing
Item Date 1942



Item Description Clumps of unbleached stringed wool.