

This copy has been provided by the UBC Archives [or UBC Rare Books and Special Collections] and is to be used solely for research or private study.

YAMAGA YASUTARŌ PAPERS

FOLDER NO.

8-5

PLEASE RETAIN
ORIGINAL ORDER

VIII. 6

MAPLE RIDGE

British Columbia

An Agricultural District of the Lower
Fraser Valley, and Known as One of
the Garden Areas of the Lower
Mainland of British Columbia

Fruit-growing, Poultry-raising,
Dairying and Lumber
Manufacturing



Where Opportunities For Home - Making
Amid Congenial Surroundings and
Every Community Advantage
Are Unexcelled

The Columbian Co., Ltd.  Printers & Bookbinders

CID FR
8.5
INGER CORPORATION
INGTON, VIRGINIA

MAPLE RIDGE MUNICIPALITY

A Fraser Valley Municipality, Situated on the North
Shore of the Fraser River, Twelve Miles from New
Westminster and Twenty-four Miles East of Van-
couver on the Main Line of the Canadian
Pacific Railway.

Area, 75,000 Acres, Having an Assessed Value of
\$1,920,770.

Population, 5,000.

Administered by a Reeve and Council of Five Members

REEVE—JOHN B. MARTYN

COUNCILLORS

Ward 1—J. R. Brooks

Ward 2—Richard Isherwood

Ward 3—Wm. H. Ansell

Ward 4—Robert Gunn

Ward 5—Herbert S. Blois.

Clerk of Municipality—J. C. McFarlane

Assistant Clerk—J. F. Anderson

Municipal Hall and Clerk's Office—Port Haney, B.C.

Authorized and Issued by the
MUNICIPAL COUNCIL OF MAPLE RIDGE
1925

For further information regarding Maple Ridge write
the Clerk of the Municipal Council, Port Haney, B.C.;
the Secretary of the Maple Ridge Board of Trade, Port
Haney, B.C., or the Secretary of the Hammond Board
of Trade, Port Hammond, B.C.

OLD FLEET
FINGER CORPORATION
PORT HANNEY, VICTORIA



KANAKA CREEK

One of the scenic rivers of Maple Ridge, which flows into the Fraser at Port Haney. The causeway is known as Weldon's Bridge.

MAPLE RIDGE

Its Agricultural, Lumbering and Community Advantages

(A fair and unexaggerated representation of its agricultural, industrial and residential advantages.)

The scenic beauties of Maple Ridge can be appreciated in a day by pedestrian or vehicular traveller and requires merely casual observation.

Its advantages as a home has to be explained and facts submitted.

This municipality is situated on the North Shore of the Fraser River with a number of harbors of fresh water of ample depth to make them accessible to the largest ocean freighters. The land slopes up from the river to a height varying from fifty to one hundred feet. At this elevation a plateau runs back to the foothills of the Coast Range of mountains, which form the northern boundary of the municipality. This plateau varies in width from four to six miles and extends the full length of the corporation, a distance of thirteen miles.

The district is convenient to the city markets of the lower mainland—by rail only 12 miles from New Westminster and 24 miles from Vancouver with excellent motor roads and water transport.

Land suitable to every form of agricultural production may be found within the boundaries of the municipality, but dairying, fruit farming and poultry raising have been found to be the lines that give the best returns for the effort expended and the money invested.

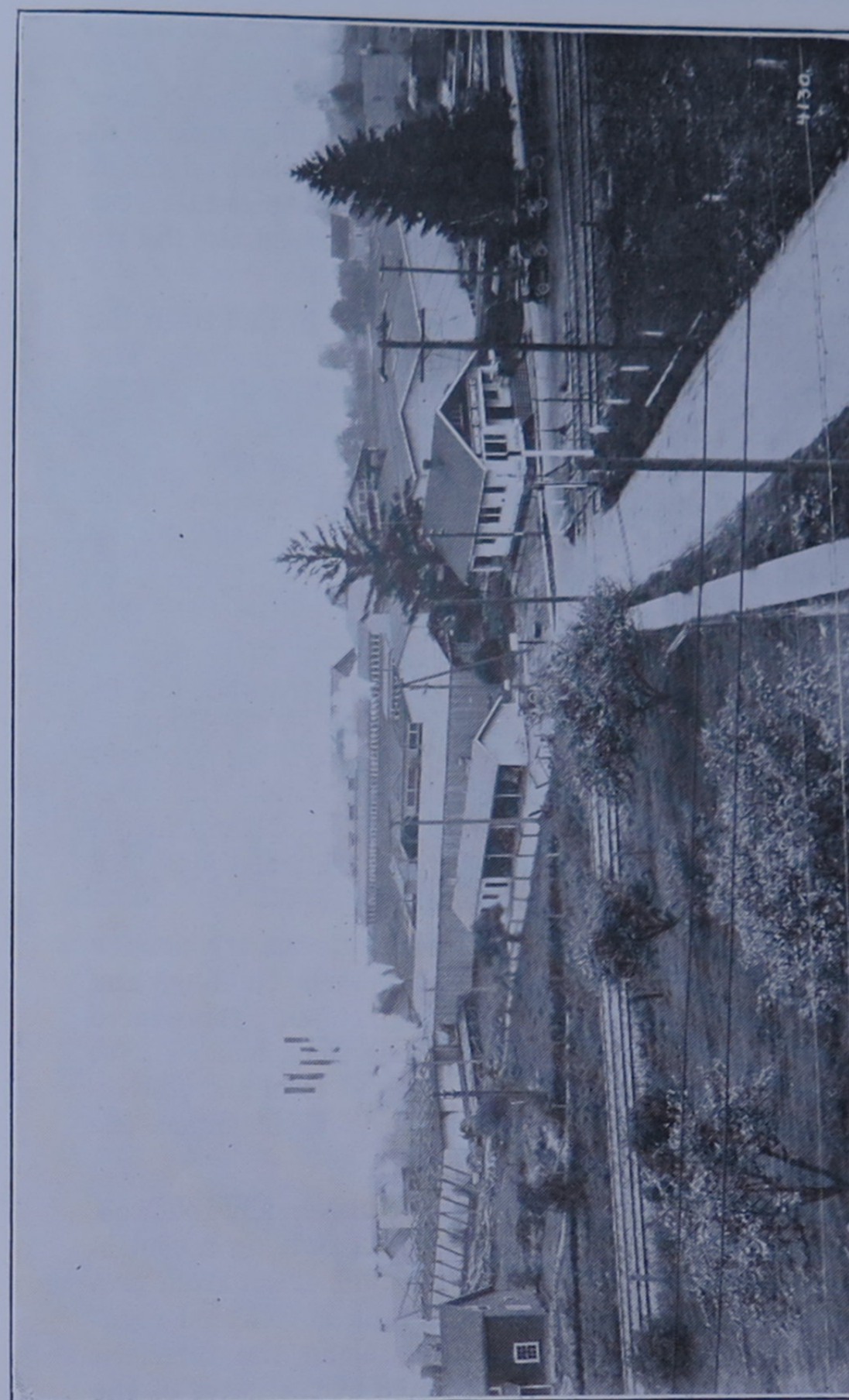
It has sporting attractions as diversions in angling and shooting on many lovely trout lakes and game areas, the former including many species of trout, not to mention the Lordly Salmon in the Fraser and the Royal Sturgeon.

The natural resources of Maple Ridge are valuable, diversified and accessible. At present we may merely specify the external ones, leaving those mineral ones for exploration and deduction. The chief industry for the novice is lumbering in its different manifestations. Clothed with magnificent timber tracts, the municipality contains several of the larger logging operators in B. C. employing large numbers of men in the various departments of each enterprise. These lumber camps provide a local and profitable market for the food produced by a rural community. One such logging outfit which may be mentioned is the Abernethy-Lougheed Logging Company, giving employment to



COSY MAPLE RIDGE RESIDENCE

approximately 700 men in the woods concentrated in three camps. Besides the production of logs from the primeval forest, mills of considerable output and reputation exist in the municipality. Here again one may suffice to illustrate the importance of the manufactured timber industry. The Hammond Cedar Company with its ever increasing mill extension on the Fraser River frontage at Hammond has a reputation in the Eastern markets of providing only the highest kind of timber product. It employs on an average 300 men. Other mills of lesser output but of considerable



HAMMOND CEDAR CO., LARGE AND UP-TO-DATE PLANT AT PORT HAMMOND, B. C.

importance are scattered throughout the municipality at points of vantage.

To facilitate easy water transportation along the Fraser River front, the Dominion government maintains large wharfs at Hammond, Haney, Albion, Whonnock and Ruskin. To these have to be added several by the mill companies at Haney for their private use. A new Government wharf at Hammond was rebuilt on a more extensive scale this year on a new site and estimates have been passed for the rebuilding and extension of the Haney wharf.

The development of the water power in and near the municipality is a feature of its industrial situation. The magnificent dam now in course of construction on the Alouette river lake, and the vast works constructed and in course of construction do not require any recapitulation. The B.C.E.R. Company have spent enormous sums in the district to supply energy and light between their power plants and consumers. These cheaply provided supplies of electricity are not only valuable to the manufacturer and logger but to the poultry farmer and residenter.

In 1874 there was discovered the famous clay bed at Haney which has now developed into the Haney Tile and Brick Works, a flourishing industry producing the celebrated variegated rough and smooth faced bricks for building purposes now enjoying much enviable notoriety in the cities of the coast. Their agricultural tiles are also well known for quality among farmers.

Maple Ridge is specially celebrated for utility poultry and small fruits, many of the poultry farm buildings and equipment with their flocks in thousands being reproduced in agricultural magazines. Individually flock holders have ever been to the front with their birds at local and provincial shows while in egg-laying contests their names are almost household words.

Dairying is also important if not so universally followed. The several milk handling organizations running a continuous stream of trucks conveying the milk fresh from producer to consumer in the city. The milk is collected regularly night and day by the trucks along the different routes, the empty cans being deposited at the gates of the farms.

Large quantities of small fruits are handled annually by the Maple Ridge Berry Growers (a branch of the B. C. Berry Growers), and the Pacific Berry Growers, both enterprises having pre-cooling plants and the Pacific Berry people have a factory at Haney as well.

The United Farmers Limited exist for the benefit of the poultrymen and dairymen and dairymen locally producing. It is a joint stock company worked on co-operative lines. Formed some fourteen years ago with the motive of providing cheaper feed to the local farmers, it has proved a benefit to the producer in every way. They have large ware-



STANDING TIMEBR ON THE LIMITS OF THE ABERNETHY-
LOUGHEED LOGGING COMPANY

houses established at Hammond, Haney, Whonnock and Pitt Meadows, the latter an adjoining municipality.

Since their start the farmers have distributed \$1,750,000 of various foods used by a membership of some 500 shareholders, local men.

Water is abundant and good throughout the municipality. Hammond and Haney have their own systems. Creeks and springs abound and wells have not to be dug to any great depth.

To mention climate is superfluous, the gardens speak for themselves. Indeed Brown Brothers, celebrated florists,

have a large acreage for the cultivation of blooms and five acres under glass. The climate has often been compared to the south of England winter resorts.

While no large towns exist, large trading villages with up-to-date stores at Hammond, Haney, Albion, Whonnock and Ruskin on the main C.P.R. line and Webster's Corners on the Dewdney Trunk road. The spacious bed of the Fraser also provides water communication. Besides railway and water transport there is an excellent auto-stage service between the principal points of the municipality and New Westminster and Vancouver, the large cities of B. C.

Hotel accommodations and restaurant provision is adequate. There are theatres, community halls, meeting places for all kinds of recreation and shady athletic club grounds.

Mention must be made of the annual Agricultural Fair. There are to be seen what Maple Ridge can grow in abundance.

Home life in Maple Ridge in its most remote corners is on a high plane. Its schools are renowned for the educational qualifications of its teachers in high and public schools and success of the pupils in government examinations. There are nine public schools, a superior school at Ruskin and a high school in the civic centre of the municipality at Haney. Add to this manual training classes for the boys and sewing classes for girls at Haney, Ruskin, Hammond, and Maple Ridge (by the way Maple Ridge is the district more particularly applied to the portion between Hammond and Haney). This year the School Trustees have initiated a fourth year class in their high school curriculum. This course keeps the student at home during a critical stage of life apart from being a factor in economic circumstances of parents with livings to make.

Now with all the foregoing facts which are no real estate propaganda but which the compiler presents as a fair representation of the desirability of Maple Ridge as a residence for a settler of limited means with ordinary qualifications of a decent citizen. What about land and taxes?

Maple Ridge has steadily refused to burden its public with bonded indebtedness and ever confined its expenditure to its income. Land is naturally an acquisition dependent



AN EXTENSIVE GREENHOUSE PLANT AT MAPLE RIDGE

upon situation but has never been considered held at exorbitant prices. The taxes are low, intended to provide for annual costs without milestone burdens round the municipal neck.

The taxation rate on improved land is 12 mills and the school rate of 8 mills levied of 50 per cent. of their assessed value, improvements are exempt from taxation.

All Christian religious persuasions are ministered to. There are medical practitioners in Haney and Hammond as well as chemists and dental graduates. Justice is administered by a resident police magistrate at Haney.

The length of roads in the municipality is 130 miles and they are being continually added to. This system includes a primary road running east and west through the municipality a distance of some 15 miles.

The writer had almost forgotten the securing of a big sturgeon—there are plenty sturgeon to be caught—and some fishermen use cuss words in regard to their presence, anyway one of the biggest in recent years was caught in the vicinity of Albion.

Deer are plentiful and from the foothills to the crops many a dainty bit of venison is secured for the winter. Ask Mr. Wm. Webster and Mr. Walter Best about these. Likewise bear. But hunting generally is too well known in the vicinity to be written about. Bear sometimes are a nuisance but their hides make up for the trouble they gave.

A 9-hole Golf Course will be opened on October 1st.

