

# The Newest Ideas In Summer Footwear

All One Price on Our Mezzanine Floor



\$7.50

TIES PUMPS STRAPS SANDALS

Swiss Cloth in white and sea- sand; Lisen in white and natural shades; Kidskin in white, beige, suntan, parchment, etc. A wide range of styles, with styles Cuban, Spanish, junior Spanish and low sport heels.

Come in Saturday and save \$2.50 on every pair of shoes you purchase

Home Mail Order All the new shades to match are promptly and carefully filled.

## RAE-SON Limited

644 GRANVILLE STREET Also at New Westminster

### KIWANIS HEAD TO VISIT VANCOUVER

William O. Harris of Los Angeles, newly elected president of Kiwanis International, will pay a flying visit to Vancouver over the week-end, according to word which has just reached Harry Robb, secretary of the Vancouver Kiwanis Club.

Mr. Harris is coming here to confer with the local executive committee on internal matters pertaining to Kiwanis International. The Vancouver Club is one of the largest and most active in the entire roster of Kiwanis Clubs and on his way to attend an executive conference in Chicago, Mr. Harris is routing via Vancouver.

He will arrive from the south at 10:30 p.m. Sunday and leave for Monday, his time being fully occupied with executive business.

### Vancouver Tops Seattle Building

A comparison of Vancouver and Seattle buildings returns for May shows this city leading by \$7,400 in the value of permits issued, the total for Vancouver being \$1,014,394 and for Seattle \$1,008,800.

### out of the icy North Pacific serve the Tang of the Sea ...in appetizing Clam Fritters

ICE cold currents, sweeping in from the open Pacific to the marine gardens of Massett Beach, provide a rich feeding ground for Snow Cap Clams. In the plump, white meat, delicious as young chicken, you can taste the tang of the clean open sea. Serve your family this appetizing sea food, rich in mineral salts, the Sunshine Vitamin "D" and muscle-building protein. Snow Cap Clams are quick to prepare and very economical . . . about 5c per person. Free Recipe Book containing 24 new suggestions for lunches, dinners and impromptu supper parties. Send your name and address.

NOYKA PACKING COMPANY, LTD. 504 Yorkshire Building, Vancouver, B.C.



Two sizes—the "Economy Size" for family use; the "Handy Size" for impromptu events.

## BRINGS HIS PLANE TO TOUR AMERICA

### Australian Assembling Craft at Airport

Australia, despite the depression, has a non-developed aviation industry and in both private and official flying great headway is being made at the present time.

Mr. Murray, an aviator and business leader of Canada, United States and Australia, has brought his own airplane along and in order to see to it that the country is as well equipped as possible during his stay, will fly to as many of the major cities as possible.

Mr. Murray will stay here a few days and then will hop off for Los Angeles, where he will visit the United States and at some point in the east turn northward for a call at Toronto and other Eastern Canada points.

Speaking of commercial airways, Mr. Murray produced a map showing how the Island Continent is almost completely encircled by government subsidized mail and passenger air lines.

Another government subsidized line extends from Brisbane away into the northern territory, terminating at Berbin, where railway connection is established to Port Darwin. This line is about 1500 miles long.

Companies headed by the famous Col. Chesford Smith, former Vancouver school boy and world flyer, serve the Sydney-Melbourne direct, regular commercial line extending from Sydney to Brisbane, Sydney to Melbourne and Melbourne to Hobart, Tasmania.

"Our population is not large," said Mr. Murray, "but we already have about 100 privately owned planes, and as soon as business conditions improve, this number, I believe, will be rapidly increased."

BACKS MODERATISTS Considering current Australian political conditions, Mr. Murray said he believed if an election should be held, the Lyons-Penton Moderatist party would sweep the present Labor administration and that Australia would recover economic stability very quickly under good government.

The Monowal, commanded by Capt. Sydney Browne, who is commander of the M.V. Aorangi, is a red-cap in the Canadian National Railways depot, this information having been supplied by the police.

It was stated in The Vancouver Sun yesterday and Tuesday that Ishi Aoki was part of a meal eaten by the Aoki family in their room but none of the others suffered ill effects.

It was stated in The Vancouver Sun yesterday and Tuesday that Ishi Aoki was part of a meal eaten by the Aoki family in their room but none of the others suffered ill effects.

Another government subsidized line extends from Brisbane away into the northern territory, terminating at Berbin, where railway connection is established to Port Darwin. This line is about 1500 miles long.

Companies headed by the famous Col. Chesford Smith, former Vancouver school boy and world flyer, serve the Sydney-Melbourne direct, regular commercial line extending from Sydney to Brisbane, Sydney to Melbourne and Melbourne to Hobart, Tasmania.

"Our population is not large," said Mr. Murray, "but we already have about 100 privately owned planes, and as soon as business conditions improve, this number, I believe, will be rapidly increased."

### ANALYST'S REPORT MAY SOLVE DEATH

City Analyst J. F. C. B. Vance will complete his analysis this afternoon of the contents of the stomach of T. Aoki, Japanese city jail inmate, who died Tuesday night from what is believed by police to be arsenic poisoning.

Aoki, awaiting trial on a charge of false pretenses, was taken suddenly ill after consuming a meal of rice and tea in his cell. The food was brought to the jail by the prisoner's brother, Ishi Taro Aoki of 516 Main Street.

It was stated in The Vancouver Sun yesterday and Tuesday that Ishi Aoki was part of a meal eaten by the Aoki family in their room but none of the others suffered ill effects.

Another government subsidized line extends from Brisbane away into the northern territory, terminating at Berbin, where railway connection is established to Port Darwin. This line is about 1500 miles long.

Companies headed by the famous Col. Chesford Smith, former Vancouver school boy and world flyer, serve the Sydney-Melbourne direct, regular commercial line extending from Sydney to Brisbane, Sydney to Melbourne and Melbourne to Hobart, Tasmania.

"Our population is not large," said Mr. Murray, "but we already have about 100 privately owned planes, and as soon as business conditions improve, this number, I believe, will be rapidly increased."

BACKS MODERATISTS Considering current Australian political conditions, Mr. Murray said he believed if an election should be held, the Lyons-Penton Moderatist party would sweep the present Labor administration and that Australia would recover economic stability very quickly under good government.

The Monowal, commanded by Capt. Sydney Browne, who is commander of the M.V. Aorangi, is a red-cap in the Canadian National Railways depot, this information having been supplied by the police.

It was stated in The Vancouver Sun yesterday and Tuesday that Ishi Aoki was part of a meal eaten by the Aoki family in their room but none of the others suffered ill effects.

Another government subsidized line extends from Brisbane away into the northern territory, terminating at Berbin, where railway connection is established to Port Darwin. This line is about 1500 miles long.

Companies headed by the famous Col. Chesford Smith, former Vancouver school boy and world flyer, serve the Sydney-Melbourne direct, regular commercial line extending from Sydney to Brisbane, Sydney to Melbourne and Melbourne to Hobart, Tasmania.

"Our population is not large," said Mr. Murray, "but we already have about 100 privately owned planes, and as soon as business conditions improve, this number, I believe, will be rapidly increased."

BACKS MODERATISTS Considering current Australian political conditions, Mr. Murray said he believed if an election should be held, the Lyons-Penton Moderatist party would sweep the present Labor administration and that Australia would recover economic stability very quickly under good government.

The Monowal, commanded by Capt. Sydney Browne, who is commander of the M.V. Aorangi, is a red-cap in the Canadian National Railways depot, this information having been supplied by the police.

It was stated in The Vancouver Sun yesterday and Tuesday that Ishi Aoki was part of a meal eaten by the Aoki family in their room but none of the others suffered ill effects.

Another government subsidized line extends from Brisbane away into the northern territory, terminating at Berbin, where railway connection is established to Port Darwin. This line is about 1500 miles long.

## Runs Air Line



Here's Miss Dorothy Werner, recently named as Kansas City territory manager of a big airplane line and said to be the only woman holding a major position on United States Airways.

## WOMAN ON WITNESS STAND FOUR HOURS

NEW WESTMINSTER, June 19.—Mrs. Louise Minnow, occupied the witness box all day Thursday to defend herself from charges of arson and attempt to defraud insurance companies of \$4800.

For four hours, T. R. Soltek, crown counsel, subjected the accused to a grueling cross-examination in an endeavor to shake her testimony of denial of the charge of setting fire to her Tangley Prairie home, March 22 last.

The court room resembled a department store when trunks and bags of clothing lined the exhibits were produced. Mrs. Minnow denied that the clothing produced was the same as the items listed as lost on the claim of insurance.

The case which has lasted five days, will go to jury today.

### Ruth Hopeful of Starting Tonight

NEW YORK, June 19.—Repairs were being made to Miss Ruth Fitch's plane today in the hope that she could start for Paris this evening or tomorrow.

She was ready to start for Portland, Me., and Harbor Grace, Nfld., when the strut of the landing gear were found broken at Ford Bennett Airport after a flight from Jersey City yesterday.

Harold Gladly and Wiley Post, who hope to make a non-stop flight to Berlin or Moscow, said they would try to get away tomorrow for Harbor Grace.

## "Was Poisoned by Constipation. Headachy, Dizzy. All Right Now"

### Years of Wretched Health Ended by "FRUIT-A-TIVES"

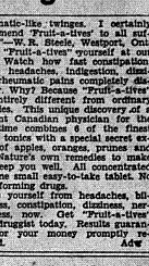
"I was poisoned from Constipation and could hardly walk. Tortured with indigestion, terrible Headaches, Dizziness and pains in joints and muscles. I had no appetite. Was about ready to give up my work. I felt soretched and crippled."

"Then I read about 'Fruit-a-tives' tried them and got wonderful relief almost immediately. Today I feel fine. My bowels are regular, no stomach trouble, Headaches or Dizzy Spells, no more."

Free yourself from headaches, biliousness, constipation, dizziness, nervousness, now. Get 'Fruit-a-tives' from drugists today. Results guaranteed or your money promptly refunded.

One spot in the Pacific, 40 miles east of the Philippines Islands, is the deepest part of the sea yet sounded. The depth recorded there was about 9000 fathoms, or seven miles.

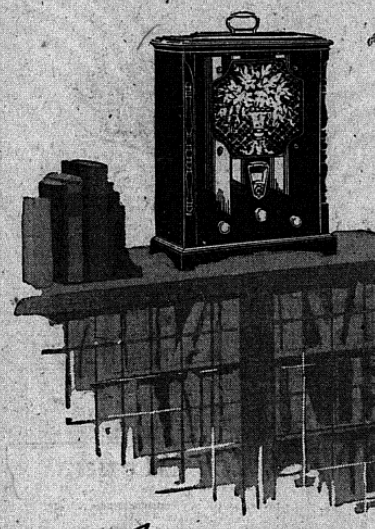
The deepest spot in the Atlantic is off Porto Rico, where 523 fathoms were registered.



Free yourself from headaches, biliousness, constipation, dizziness, nervousness, now. Get 'Fruit-a-tives' from drugists today. Results guaranteed or your money promptly refunded.

One spot in the Pacific, 40 miles east of the Philippines Islands, is the deepest part of the sea yet sounded. The depth recorded there was about 9000 fathoms, or seven miles.

The deepest spot in the Atlantic is off Porto Rico, where 523 fathoms were registered.



# Introducing the GENERAL ELECTRIC "Junior"

## An 8-tube Super-Heterodyne at \$89.50

Now you can obtain Full Range Tone, Power and Selectivity in the new "Junior" Super-Heterodyne models of General Electric Radio—priced as low as \$89.50 (complete with General Electric Radiotrons.)

They also give you Tone Control—full-size 8" dynamic speaker—phonograph connection—and the marvelous new Super-Control Radiotron that greatly improves tone quality.

A bronze carrying handle makes the General Electric "Junior" readily portable. It is so light a boy can carry it. The "Junior" is also available, at slight extra cost, with a General Electric Telephon—the original all-electric clock.

Hear the new "Junior" at the nearest General Electric Radio dealer's. Then you will know the truly remarkable advantages of Full Range performance—offered for the first time in low-priced sets.

## GENERAL ELECTRIC FULL RANGE RADIO

Sold in Vancouver by: B. C. Electric Railway Co. Ltd., 601 West Hastings. Forster Hardware Co., 2422 East Boulevard. Hastings & Elliott, 52 & Hastings St. W. 4th. Radio Co., 1109 Granville. Best Piano Co., 233 West 5th. Lewis Piano House Ltd., 1544 Granville. Manitoba Hardware Co., 114 Commercial Drive. Shiga & Minato-Gawa, 561 East Powell. Edmonds Piano Co., 564 Richards Street.



The Junior with Clock \$105.50 Complete with G. E. Radiotrons. The Junior Console \$119.50 Complete with G. E. Radiotrons.

# CANADIAN GENERAL ELECTRIC Co. Limited