

# Acute Shortage of Gill-Nets May Cut Fish Production

## B.C. Japs Make Nets For White Fishmen

An acute shortage of gill-nets which may curtail valuable supplies of British Columbia fish next season was foreseen today by a representative of the largest fishermen's supply firm in the west.

### SAFETY MAN



CHARLES PEARCE

Assistant Provincial Deputy Minister of Labor, Victoria, who has resigned to take a position with Stuart Research Service Ltd. of Vancouver.

Mr. Pearce, with the Provincial Department of Labor for the past ten years, has specialized in safety engineering and labor relations, and it is in that capacity he joins the staff of the Stuart Research organization.

A native son of British Columbia, Mr. Pearce was born at Cumberland, Vancouver Island. He has worked most of his life in this province and has had wide experience in the forest products industries. In the last war he served in the Royal Flying Corps.

"Flax for these nets has come in the past from Belgium and France, but supplies of this are now starting to run out," he said.

Japanese fishermen now living in the Interior have made several hundred nets for B.C. white fishermen, but the shortage is going to be in flax for the nets, rather than in labor to make them, he pointed out.

A number of the Japanese who were formerly fishermen on the B.C. coast are experienced net makers, having made their own.

### NOT AS GOOD

Nets thus made by hand are not as good as manufactured nets, however, this representative pointed out.

The British Government controls available supplies of the flax necessary, he said.

"But in our own case, we have already sold the supplies allotted to us for as far ahead as 1945.

"There is a shortage of nets this season, but it is unlikely that fish production will be affected this year as individual fishermen will probably catch more with the nets they have.

"Next season, however, when nets are much scarcer, a certain amount of fish will probably get away.

### INSUFFICIENT NOW

"There aren't enough nets to go around for the spring salmon fishing now.

"About one-half the high-priced fish, like sockeye salmon, are caught in nets.

"Nets last from one to two years, but the wartime nets don't usually last more than a year. About 8000 new nets are needed by B. C. fishermen each year, with a total of between 5000 and 6000 in use."

The Belgians and French have been growing the flax needed for fish nets for generations, it is pointed out. This flax has about a 4-inch fibre.

Irish flax has barely a two-inch fibre, which makes weaker nets, it is pointed out.

Experiments with flax are being conducted in Canada, but this takes time, and soil, climate, experience, processing methods, etc., all enter into the picture.

### CHOSEN



ELMER W. ANDREWS

Managing director of Bekins Moving & Storage Co. Ltd., Vancouver, who was elected vice-president of the Canadian Warehousemen's Association at the concluding session of the twenty-fourth convention in Toronto on Friday, Mr. Andrews was in Toronto attending the meetings. Robert A. James, Calgary, was re-elected president, and directors include: E. V. MacCosham, Alberta; Elmer Johnson, British Columbia; George H. McKee, Manitoba, and Harold McElroy, Saskatchewan.

## Coal Strike Makes Trading Quieter in N.Y.

By British United Press  
NEW YORK June 19.—Stocks softened today in lightest Saturday turnover of the year as coal miners resumed their strike in many sections to protest the War Labor Board decision against them.

Traders neglected the rail and steel issues because companies in these line would be first affected by a prolonged coal strike. It was reported in the financial district that steel operations would have to be curtailed sharply within a week and shut down entirely in two weeks if the strike spread throughout the soft-coal industry.

Bethlehem eased nearly a point and other steel stocks lost fractionally. Rail issues were easier in most instances although the high-priced Norfolk & Western gained nearly a point.

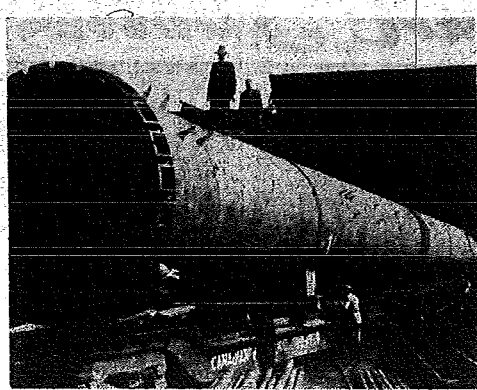
Automobile shares, coppers, oils, mercantile shares and electrical equipments were steady to easier.

Utilities were irregular with common stocks moving narrowly.

Columbia gas 6 percent preferred lost more than a point while Public Service 5 percent preferred gained more than a point.

Commonwealth & Southern featured in volume and receded slightly.

### RECORD RAIL SHIPMENT



The largest single unit freight shipment ever carried over the Canadian National Railways, and exceeding any known previous record established by lines on this continent, is now on the system double track main line travelling from Lachine, Quebec, to the government's synthetic rubber plant at Sarnia, Ontario, moving on a five-day schedule for a distance which fast freights traverse in the hours from near midnight to just past noon.

Manufactured by the Dominion Bridge Company, this huge tank, technically known as a "B.B. Extractor," is a war job for the synthetic rubber plant. It weighs 150 tons, is more than 185 feet long, 12 1/2 feet wide and 16 2/3 feet above the top of the track rail. This record load was placed on three flat cars, being cradled in special beds on the end cars, the middle one being an "idler." Because of its length and projections the tank is being moved only during daylight and then at a restricted speed of 15 miles an hour. At curves extra precaution must be taken so that the front and end will not sheer off switch targets or signal posts.

## Logging Operators Prepared For Dry Season Fire Hazards

When the zero-hour arrives in British Columbia forests for the appearance of the annual forest fire menace, coast logging camps will be found armed with plenty of fire-fighting equipment.

In fact, most logging operations are now equipped far above government requirements, according to British Columbia Forest Service officials, who are highly pleased with the state of preparedness despite the man-power shortage and the difficulty in obtaining fire-fighting equipment.

All logging camps are provided with a "Schedule of Tool Requirements," by the Forest Branch, which specifies the equipment required in accordance with the number of men employed in each operation. These requirements

are in addition to fire-fighting equipment necessary for donkeys, locomotives and that used for other purposes.

Extreme measures beyond government regulations are taken by many operators to combat fires, especially during the hazardous season. One camp alone employs, at this time, from 30 to 40 patrolmen and spark-chasers and four men to each fire-fighting unit.

Each unit is equipped with a portable pump and at least 1000 feet of 1 1/2-inch hose, in addition to all necessary equipment sufficient to outfit a crew of from 50 to 250 men with axes, mattocks, shovels, palls, etc.

During the dry period most operations revert to the "Hoist-Owl" shift, when work commences at daybreak and ceases before noon, or at the end of

eight hours. Operations stop entirely in the majority of camps when the humidity drops to the danger point, which is 30 percent.

"The number of fires caused from logging operations is now comparatively small; records will show that forest fires from this cause have been reduced 75 percent in the last 20 years.

From 1925 to 1932 a total of 365 fires were attributed to logging operations; in the second decade the number fell to 423 from 1933 to 1942. There are approximately 500 logging operations in the coast region alone.

Less than three percent of the total forest fires occurring in 1942 were attributable to logging operations.

### Grain Markets

Table with columns for Grain (Wheat, Oats, Barley), Price (WINNIPEG QUOTATIONS), and Market status (Low, Close, etc.).

Vancouver Sales table with columns for Commodities (CARRIAGE, GRILL, HED, CALMONT, EAST) and Prices.

Scrap machinery was used to reclaim 700 acres of idle land near Thurrock, England, which will yield crops this year.

## How the Stock Markets Acted

Toronto, Mines, Oils (By A. E. Jukes & Co.) AVERAGES table with columns for Industrials, Golds, Base Metals, Western Oils, and Total sales.

Wall Street DOW JONES AVERAGES (By James Richardson & Sons) table with columns for Industrials, Rails, Utilities, and Total sales.

Vancouver CLOSING PRICE AVERAGES table with columns for Commodities (Aluminum, Bauxite, Cariboo, etc.) and Prices.

Toronto Industrials (By G. M. Oliver & Co. Ltd.) table with columns for various industrial stocks and prices.

Table with columns for Wheat, Oats, Barley, and Market status (Low, Close, etc.).

Livestock CHICAGO, June 19—(BLP)—Lvs- stock table with columns for Hogs, Cattle, and Sheep.

MINES table with columns for Commodities (Aldermae, Anglo Huron, Anfor, etc.) and Prices.

Allied Chemi table with columns for various chemical products and prices.

Montreal (By James Richardson & Sons Ltd.) AVERAGES table with columns for Oils, Industrials, Golds, and Total sales.

Currencies table with columns for New York, Canada, and Foreign Exchange rates.

Table with columns for Commodities (Dom Steel, Dom Foundry, etc.) and Prices.

Table with columns for Commodities (Gen Steelwares, Goodyear Tire, etc.) and Prices.

OFFICE FURNITURE advertisement for NEW and USED DESKS, FILING.