

Decree Closing Crown Lands To Japanese Held "Not New"

Federal Service officials here yesterday described as "nothing new" the reopening of restrictions regarding Japanese from work on logging operations on Crown forest lands.

Although not written into the statutes, the restrictions have been part of provincial policy for two years.

Their purpose is to prevent Japanese from acquiring land in the coastal region by a Federal order in part of equipment of Japanese in logging in interior areas.

This was done by the Federal Government in a move to keep the coastal region open to Canadian and United States investment.

Japanese evacuated from the coast.

Federal orders suspending the old provincial restrictions were withdrawn last April, and interior logging operations were resumed.

It was stated that the provincial government is again in force, and that all Japanese later must be dispersed.

Announcements

All members of the Progressive Conservative Association of British Columbia are invited to attend an important meeting to be held at the Grand Hotel, 1000 Port Street, on Thursday, January 29, 8 p.m. Included in the agenda will be a political debate between two groups of members of the Progressive Conservative Association.

Invitations have been sent to Mr. Ted Sheik and Mr. Peter Hanson, occupying an exceptionally interesting meeting.

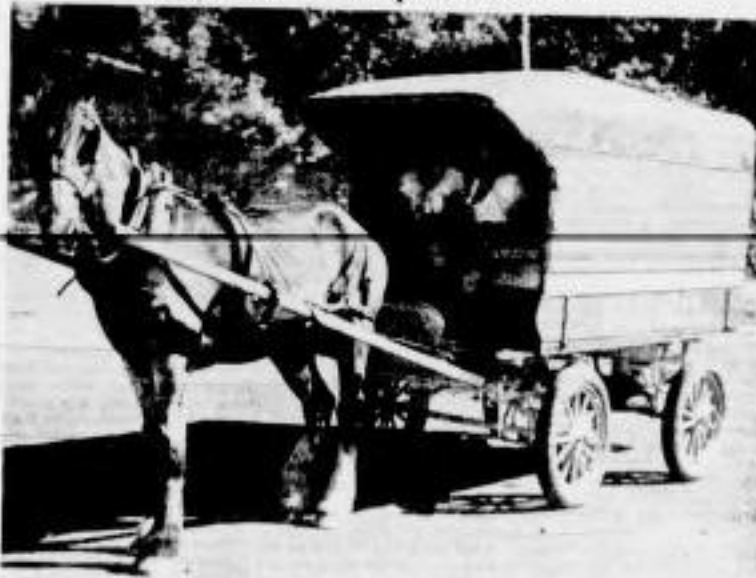
Alcoholic Intoxication—The alcoholic as distinguished from a normal drinker is a person who drinks even when he doesn't want to and even when he is drunk. Such compulsive drinking causes depression and other troubles. If this is your problem, then you may obtain help—free and confidentially. Appeal Victoria Chapter, Alcoholic Anonymous, P.O. Box 50, Victoria, B.C. Phone 228, Downtown, B.C.

Salvage Deposits—The Salvage Army will pick up from your door salvage of all kinds: used clothes, shoes, furniture, your own household appliances, carpets, rug, curtain, books, newspapers, magazines, records, etc. Make your call when you give it to the Army it is help others. Phone G 1212.

Afternoon Tea, Luncheon, Dinners—"Gala English" Club Tea Luncheon at 11:30 a.m., 1000 Port Street, Victoria. The Club is now located at the Royal Victoria Hotel with its group of 15th century furniture. Winter luncheon menu available. 430 Langford St. O 0233. Meet at the Women's Canadian Club.

Women's Canadian Club—The Women's Canadian Club is now at the Grand Hotel, 1000 Port Street, Victoria. The Club is now located at the Royal Victoria Hotel with its group of 15th century furniture. Winter luncheon menu available. 430 Langford St. O 0233. Meet at the Women's Canadian Club.

How to Cut Transportation Costs



This modern covered wagon was used by Miss Marion Robertson, now in Victoria, and Miss Jennie Bamford, former resident, for 500-mile tour down coast of Australia last Autumn. Horse is called "The Lion" and in spite of his 28 years clogged along steadily, even over mountain passes. Miss Robertson (left) came here December 12 after 20 years in Australia.

When Miss Marion Robertson decided to leave Australia and settle in Victoria, she sought a friend to look around for an inexpensive way to see more of the country before returning to Canada.

The result was a 500-mile trip from near Brisbane to Swan, in New South Wales, in a specially built wagon pulled by an elderly but gay horse that made the trip in 40 traveling days.

Miss Robertson and Miss Jennie Bamford, who was her driver and interested in Victoria, took along two knitting machines to turn out socks from Australian wool to finance the four-month sight-seeing tour.

The wagon frame was part of an old Ford, with a passenger seat removed and the top riding two feet higher.

Harold Pittcher, president of District No. 1, stressed the need of the laborer in operation between management, union and workers' Compensation Board in reducing the "triplet" system and death rate in industry.

Mr. Pittcher stressed the importance of strengthening safety commissions, eliminating mechanical defects and improving the accident prevention and first-aid understanding of the workman and management through education.

Journey With "The Lion" Preceded Trip To B.C.

When Miss Marion Robertson decided to leave Australia and settle in Victoria, she sought a friend to look around for an inexpensive way to see more of the country before returning to Canada.

The result was a 500-mile trip from near Brisbane to Swan, in New South Wales, in a specially built wagon pulled by an elderly but gay horse that made the trip in 40 traveling days.

Miss Robertson and Miss Jennie Bamford, who was her driver and interested in Victoria, took along two knitting machines to turn out socks from Australian wool to finance the four-month sight-seeing tour.

The wagon frame was part of an old Ford, with a passenger seat removed and the top riding two feet higher.

Reports Heard At St. Mary's

Annual vestry meeting of St. Mary's Church, Oak Bay, was held Monday night, with Ven. Archbishop A. E. de L. Main presiding. Reports showed a good financial condition and a high standard of achievement in church work last year. Special mention was made of work of the Sunday School and Trinity was paid the clergy. Mrs. Nunn was thanked for her work.

Officers elected were: W. J. Williams, vestry warden; Major G. E. Morris, people's warden; Major R. Nelson, C. T. Treadwell, T. C. Rogers, Colonel N. W. Turner, A. A. Brown, Rev. T. Mackay, G. V. Cross, Dr. P. W. J. V. Church, J. Clark, church committee; Mr. Williams, H. R. Colla, Col. Turner, G. E. Nelson, Mr. Berghoff, delegates to synod; H. B. Brown, G. C. Hughes, R. E. Farrell, delegates to regional conference; Mrs. Berghoff, Mrs. E. H. Sheppard, Mrs. B. E. L. Phillips, vestry committee.

Navy Man's Death Accidental; Witness Praises Rescue Care

Death of Harold G. Strating, war-torn officer from R.M.C.B. died following an automobile collision Friday night on Craigflower Road was accidental, a coroner's jury under Dr. K. C. Hart decided at an inquest at Stada Mercury Ltd., yesterday.

In his instructions to the jury Dr. Hart said it appeared to be a clear illustration of the fact that "stitches and gasoline don't mix."

The jury recommended that the pole involved in the accident be painted white and the transformer be secured "so it won't jump out of place."

Dr. Hart Dr. John Hughes testified the accident took place at 10:40 on Monday morning. Death, he said, was caused by multiple injuries and shock, including a broken rib, some of which punctured Strating's lung.

George John Lewis testified he arrived at the scene of the accident at 9:55 p.m. Friday, five minutes after he was called by radio. He said he gave instructions that the car was not to be moved until the arrival of B.C. Ambulance because it had struck a pole carrying 30,000 volts of electricity. The pole was leaning over, he said, and removed the car might have caused it to topple, bringing the live wires into contact with the car and persons working at the scene.

He said there was severe warning signs in westbound traffic within 20 feet of the pole which was struck by Strating's car. Including one marked "slow" and another marked "curve". The pole was located six feet from the paved portion of the road.



Court to Hear Shops' Appeal

The appeal of the Vancouver Machinery Depot Co., Ltd., and others, Vancouver, made against a judgment of Mr. Justice A. D. Macfarlane which dismissed the appeal of damages from an action for damages to the United Steel Workers of America, Local 2546 and 2624, and also against the parent body of the damage alleged to have been suffered by the plaintiffs due to a strike called by the defendants.

Mr. Justice Macfarlane's order which in the subject of the appeal, advised the parent body, the United Steel Workers of America, from the strike.

L.W.A. Plans Safety Drive In B.C. Woods

Officers of District No. 1 of the International Woodworkers of America, recently met with officials of the Workers' Compensation Board in work on plans to conduct an accident prevention, first-aid campaign in the woodcutting industry of British Columbia.

Harold Pittcher, president of District No. 1, stressed the need of the laborer in operation between management, union and workers' Compensation Board in reducing the "triplet" system and death rate in industry.

Women's Canadian Club Spouting 'Gala English'

The Women's Canadian Club is now at the Grand Hotel, 1000 Port Street, Victoria. The Club is now located at the Royal Victoria Hotel with its group of 15th century furniture. Winter luncheon menu available. 430 Langford St. O 0233. Meet at the Women's Canadian Club.

Annual Meeting, AMV-Elks—The annual meeting of the AMV-Elks Society, Feb. 14, 3 p.m., at Y.W.C.A. Reports, election of officers. Secretary, D. H. Jones, 124 Rossland Building, Victoria.

Special reduction in Child Welfare—A special reduction in Child Welfare for a limited time only. Please Maude Edwards of the Hospital. Ready Parties for further particulars. G 2202.

Help Kidneys In 30 Minutes

CHOPPED WOOD AND MILLWOOD \$5.00 PER CORD. BONE-DRY SLABS CUT TO LENGTH ACME FUEL.

ROBERTSON
1249 QUEENSTOWN STREET
PHONE 8 5512

Furniture Bargain

HARDWOOD KITCHEN TABLES With Drawers
Top 42" x 28"
\$4.50
CHAIRS—\$2.00
ROBERTSON
1249 QUEENSTOWN STREET
PHONE 8 5512

"THE REACH OF THE MIND"

Starting experiments at Duke University throw new scientific light on our hidden mental powers. February Reader's Digest brings you a 14-page condensation from the book by J. B. Rhine, director of Parapsychology at Duke, a fascinating report on what these experiments reveal concerning clairvoyance, mind-reading, "mind-over-matter"—even the prospect of proving survival of personality after death. Don't miss this challenging recital of facts. Get February Reader's Digest today.

Dangerous Driving Appeal Dismissed

Judge H. B. Howarth, in County Court yesterday dismissed an appeal of George Hayhoe, 2118 Dewdney Avenue, from a conviction on a charge of dangerous driving. Mr. Hayhoe was fined \$10 and his driver's license was suspended for one month by Magistrate Henry C. Hall in city police court on October 7.

The charge arose out of an accident at the intersection of Port and Quays Streets on July 14.

Those who "take short-cuts" on the roads are liable to the punishment which the law has laid down for a "stupid" act in place of a meal instead of eating properly.

TONIGHT at 8! MEET ASH

Coalition Candidate and hear **KENNETH M. LEWIS** discuss "Social Security Under Coalition Government"

JAMES SAVILLE—Chairman

ARTHUR ASH Coalition Candidate for SAANICH

ST. MARK'S HALL Solestake and Tennyson

TOMORROW (THURSDAY)
E. I. T. Woodward will discuss "Common Sense for the Common People," at Marigold Hall at 8 p.m.

LUMP 14⁷⁵ ALBERTA PER TON 13⁵⁵ 100

CHOPPED WOOD AND MILLWOOD \$5.00 PER CORD. BONE-DRY SLABS CUT TO LENGTH ACME FUEL.

BUILDERS' SUPPLIES
EVANS, COLEMAN & JOHNSON BROS. LTD.
1807 STORE ST. PHONE 8 1105

No. 1 FIR SAWDUST
Best Double-Screened
PACKED AND BULK
SELKIRK FUEL E 3914

GET THE FEBRUARY Reader's Digest NOW ON NEWSSTANDS
"Canada's Most Popular Magazine"

for Treasured Flavour!

ROYAL SCOT RESERVE HIGHLAND WHISKY

ROYAL SCOT RESERVE HIGHLAND WHISKY

ROYAL SCOT RESERVE HIGHLAND WHISKY

Hiram Walker & Sons Limited

WALKERVILLE DISTILLERS IN CANADA SINCE 1858 ONTARIO